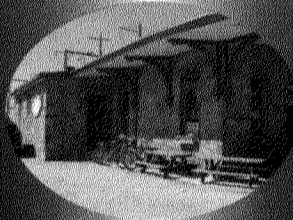


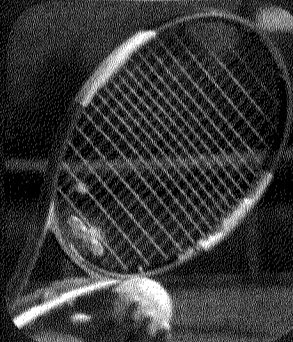
## INSIDE



First Year  
Move-In Day  
page 2...



Around Glenside  
page 3...



Arcadia sports  
page 4...



Upcoming theatre  
productions  
page 4...



AU responds to  
Hurricane Katrina  
page 4...

## Orientation breaks the ice for first years

By GREG JOHNSON  
Student Life Editor

Summer is over and school has begun once again for Arcadia students. For upperclassmen, move-in day is routine, and returning students have set-up their dorms or apartments with relative ease.

But for new students, moving in to college brings about a whole new set of circumstances. At Arcadia, freshmen and incoming transfer students partake in a weekend-long Orientation event, featuring games, seminars, reenactments and discussions that help them learn more about college life and the Arcadia community.

First year students were split into groups, each with their own set of Orientation Leaders who led them through the weekend's events.

Sophomore Orientation



Cartoons by Greg Johnson/The Tower

Leader Amanda Pipe said, "The purpose of the Orientation is to give new students a chance to become familiar with Arcadia without having the pressures of

upperclassmen."

She said this year's Orientation focused strongly on social events, hoping to give students the chance to make friends

and meet peers before classes begin.

Everyone involved in the Orientation went through two  
Please see **Orientation**, page 2

## Annual Activities Fair Attracts Crowd

By GREG JOHNSON  
Student Life Editor

On the evening of Thursday, Sept. 1, the Walk of Pride was flooded with commotion for the annual Activities Fair, presented by the Office of Student Activities.

At the fair, Arcadia students were able to preview many of the clubs and activities that the campus community has to offer. Interested students could venture

from table to table, where they were given the opportunity to talk to club representatives or sign up for any organization in which they may be interested.

Over 20 clubs were represented at the fair, sporting everything from literary magazines to art trips, radio broadcasts to rock climbing.

Despite some unruly gusts of wind, which sent a few pamphlets and brochures airborne across

campus, most of the clubs seemed optimistic about the event. Representing Peers, Beth Auger stated that even though the weather was beautiful, the wind presented a problem. She said, "We had an easel that kept falling down. Someone had to stand next to it all day." But when it came to student-interest, she said that the positive response to Peers was "a little more than I expected."

Working for both Amnesty International and the Arcadia Christian Fellowship, sophomore Corrine Landt said, "I love the feeling of community at events like this [the Activities Fair]. I was very pleased with how well the different clubs worked together and socialized."

As was true for many of the tables at the fair, the turnout for these clubs was much larger than

expected. Landt says that she was surprised at how many people showed interest in the clubs. "I was really excited. At both tables we ran out of room [for students] to sign up."

But not all those at the fair were club veterans. Not too long before the fair, sophomore Derek Demianczyk joined the AU Radio club. He said he's "always had an interest in music and wanted to share that with people." He says that he was drawn to the Radio club because he wanted to be able to give listeners a taste of some music they may never have heard of before.

"It seemed really cool," said Demianczyk, "to work with people who have the same interest and devotion as I do."

Please see **Activities**, page 2

## Welcome, Class of 2009

College is what you make of it. You'll enjoy it if you try, you'll hate it if you don't. You can do well here, and you can fail. You can be involved, or you can stay in your room. Everything is provided for you at Arcadia - do with it what you will.

Life at Arcadia is not all parties, and the sooner you come to that realization, the better. Falling behind in college coursework is a lot more difficult than falling behind in high school. Sure, you probably will party. And you'll have fun. Just remember, without classes, college is a really expensive sleep-away camp (that you'll get kicked out of).

The next four years will help you to be more responsible, but some habits die hard. You will still procrastinate (that's what those late-night Wawa runs are for). You'll probably sleep through a class (or two, or three...). You might even fail a class (it happens). You'll survive - we all do.

During the next four years, you will gain some of the most meaningful and important relationships at Arcadia University. Whether it is with classmates, roommates, faculty or staff, you will find those you can fall back on and depend on during the best and worst of times.

Choose your classes based on the professors, not based on whether or not you will be able to sleep in an extra couple of hours. If you need help, ask for it. Arcadia offers a variety of resources to help you succeed. Try to stick around on the weekends - University clubs and organizations plan a lot of activities for you to enjoy.

College is a chance to reinvent yourself, but the most important thing to remember while you are here is to simply be yourself. And if you haven't quite found your niche in the world yet, don't worry. Your experiences over the next four years will certainly help you along your way.



Kat Harbord/The Tower

Bryan Cohen answers questions at the table for Pride.

# Orientation breaks the ice

Continued from page 1

sessions of summer training to prepare for this year's event.

Second West Dilworth Resident Assistant Paul Kirby said, "The training for this job was tough... we had meetings and sessions all day everyday for two weeks."

Alongside their regular responsibilities, the Resident

Assistants helped the Campus Life Staff to organize the First-Year Students' Move-In Day. As is custom at Arcadia, the fall sports teams assisted first-years with their move-in. Because practices began early for sports teams, the athletes were on-hand to help empty cars and move boxes up and down the residence hall stairs.

It seemed like nearly every-

one was up and ready to work on move-in day. Even Arcadia President Dr. Jerry Greiner did his fair share of heavy lifting. Greiner, who helped with the first year's move-in day last year, assisted many students with their belongings, which made moving in all the more bearable.

Kirby said, "There were a few bumps along the way, but all things considered, it [first year move-in] went well."

According to those involved, the hard work behind the Orientation and the first-year move-in was definitely worth it. "My Orientation experience was amazing," Pipe said. "My favorite part was Meet Arcadia. It was a crazy, loud, late-night activity in the Kuch Center where all of the students had the opportunity to meet everyone else. There were lots of ice-breakers and games."

Sarah Borgstrom, the Resident Assistant in Third West Dilworth says that from what she saw, "The Orientation team did a really good job helping new students to adjust, and the students themselves were awesome."

Among the many events held during Orientation were a day of community service, where new students volunteered their time to work in a variety of locations throughout the area, a new-student dance in Grey Towers Castle, and a performance called *Metamorphosis*.

Held in the Chat, *Metamorphosis* was a thought-provoking, interactive play per-



Kristen Riley/The Tower

From left, first year roommates Trisha Gallagher and Kimberly Renner take a break from unpacking.

formed by three actors in a variety of roles. *Metamorphosis* focused on issues of diversity, acceptance, and stereotyping in a variety of familiar, every-day situations. "The Chat was packed for *Metamorphosis*," said Borgstrom. "The students this

year went out and really got involved."

She added, "I would have to say, from the level of enthusiasm and participation that I saw, orientation was very successful."

It just doesn't get any better than that.



Kristen Riley/The Tower

Dr. Jerry Greiner helps Steven Jablanofsky move his daughter, Stefanie, into Kistler Hall on Friday, Aug. 26.

## Arcadia University Statement on Civility

The members of the Arcadia University community encourage all individuals and groups to behave with civility. A community upholding civility respects the rights of individuals and groups. It is characterized by understanding and consideration of the differences among members of the community. The diversity of the University community adds to the richness of campus life, and Arcadia University expects all members of the community to respect both differences and commonalities. The University acknowledges every community member's constitutional right to freedom of speech and freedom of inquiry. Arcadia University also affirms every community member's right to an environment that is free from harassment of any kind. The University will not tolerate the subjection of another person, group or class of persons to inappropriate, abusive, threatening or demeaning actions at any time.

The membership of the Civility Group has identified the following as important elements for individuals' consideration in an effort to work toward civility in the Arcadia University community:

- Respecting the dignity of all persons;
- Respecting the rights and property of others;
- Striving to learn from differences in people, ideas and opinions;
- Discouraging bigotry;
- Demonstrating concern for others, their feelings, and their need for conditions that support their work and development;
- Acting with integrity.

## Activities Fair

Continued from page 1

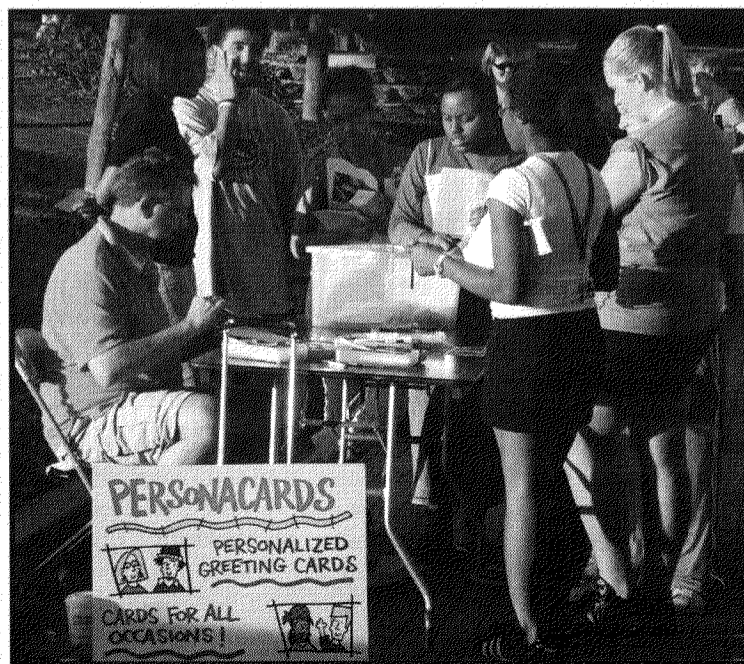
Demianczyk sat at the AU Radio table during the fair, hoping to drum up some interest among fellow students. "It was fun seeing all the different people who wanted to get involved with the radio. There's a lot more to it than just DJing. A lot of people were interested in the behind-the-scenes work, which was really cool."

Campus clubs and organizations were not the only groups to grab tables at the event. The Landman Library gave away free

pencils and schedules, and "Personacards," those witty personalized greeting cards by frequent visiting artist/writer Paul Kleba continued to draw a crowd all evening.

The Activities Fair is only held once a semester, but don't panic if you've missed it. Clubs welcome new members at any time, and clubs often post flyers with meeting times and contact information for those students who may be interested in joining.

With so many clubs and activities on campus, there is sure to be something for everyone.



Kat Harbord/The Tower

Cartoonist Paul Kleba's 'Personacards' remain a favorite of Arcadia students.

Want to see your name in print?

**Join The Tower.**

Meeting: Monday, Sept. 12, at 9 p.m. in the Tower Office, in the Dilworth Basement.

*We Want Your Help*  
**Writers, Photographers, Editors, Columnists.**

**All are Welcome.**



|                             |                     |
|-----------------------------|---------------------|
| <i>Editor-in-Chief</i>      | Kristen Riley       |
| <i>News Editor</i>          | Ryan Lovett         |
| <i>Student Life Editor</i>  | Greg Johnson        |
| <i>Entertainment Editor</i> | Jake Matkov         |
| <i>Culinary Editor</i>      | Michelle Tooker     |
| <i>Mosaic Editor</i>        | Meg Enbank          |
| <i>Photography Editor</i>   | Kat Harbord         |
| <i>Staff Advisor</i>        | Dian Taylor-Alleyne |

The Tower is the official student newspaper of Arcadia University. Opinions expressed within are those of the author and not necessarily those of The Tower or Arcadia University. Readers are encouraged to submit Letters to the Editor. The Editors reserve the right to edit for length and errors. All contributions including photographs, articles, opinions, etc., can be sent through Campus Mail or addressed to:

The Tower  
Arcadia University  
450 South Easton Road  
Glenside, PA 19038

Phone: 215-572-2171  
Email: arcadiatower@gmail.com

Printed by: The Princeton Packet

# Take a walk on the wild side

Okay, it may not be wild, but Glenside does have a lot to offer

By **KRISTEN RILEY**  
Editor-in-Chief

If you're a freshman at Arcadia University, chances are you do not have a car on campus. Of course, lucky for you, Glenside is a foot-friendly town. Arcadia's local city has a lot more to offer than meets the eye, and you certainly don't need to hop in a car to get around.

The Glenside train station is just up Easton Road, an easy walk and even easier way to head into Philly. For only a few dollars, you can take the train to Market East Station. Market East is just down the street from Philadelphia's Old City, and an easy walk to South Street.

Arcadia's Association of Fine Arts (AAFA) will be going to First Friday in Old City on October 7. The club pays for its members' train fare to and from the city to visit all of the art galleries in Old City, which are open for free the first Friday of every month.

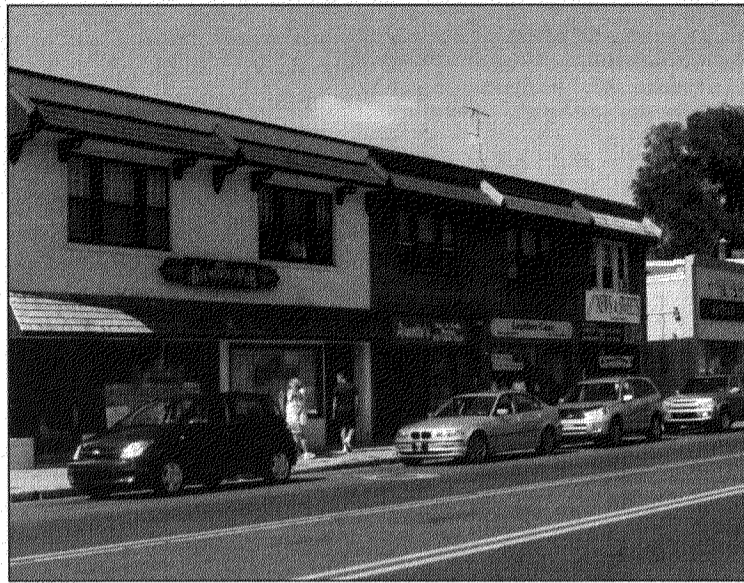
At the Glenside Train Station, you can also grab a cup of coffee and a snack at Elcy's

Coffee House. The small, charming five-year old café is owned by a Beaver College alum, and offers a variety of drinks and food, including vegetarian selections. And if you decide to go to Elcy's on a Saturday, you can visit the farmers' market on the train station grounds. It runs from 9 a.m. to 1 p.m. through October, and 10 a.m. to 2 p.m. from November to Dec. 17.

There are a variety of stores lining the sidewalks of Easton Road. Thrift shops, pizzerias, Blue Comet (if you're 21), the Glenside Pub, Dunkin' Donuts and Baskin Robbins, Blockbuster, Produce Junction, a dollar store... it may not be the most exciting selection, but it certainly is varied.

Around the corner on Glenside Avenue you have Rizzo's, a pizza parlor with a variety of offerings and an Arcadia discount, and Shanna's Homemade Ice Cream. Shanna's is open in the afternoons and evenings through the fall and offers a host of delectable homemade flavors.

At the end of Keswick



Kristen Riley/The Tower

The shops along Easton Rd. in Glenside are worth a visit.

Avenue (the end closest to us, just a few streets over from Easton), is the Glenside Free Public Library. Students are welcome to open accounts, and the library has a huge inter-library loan program with local Free Library System.

A longer walk, either straight down Keswick or down Easton (it intersects with Keswick a couple miles up), brings you to Keswick's strip of entertainment. The Keswick Theatre puts on a

variety of artists (big names, too). There is the Keswick Tavern, Keswick Coffee, a flower shop, and a variety of other small stores.

Take advantage of what Glenside has to offer right at your fingertips. It'll curb those boring days, give you some exercise and, hey, maybe even keep away that freshman fifteen.

## Join a campus club

There are so many ways to get involved at Arcadia, with over 40 clubs and organizations on campus.

### Governing Clubs

- Student Government Organization (SGO)
- Day Student Club (DSC)
- Residence Hall Council (RHC)
- Class Officers

### Sports Related Clubs

- Cheerleading Club
- Equestrian Club
- Martial Arts Club
- Skyward Rock Climbing Club
- Tai Chi Club

### Cultural Clubs

- Arcadia Christian Fellowship (ACF)
- Asian Students in America (ASIA)
- Black Awareness Society (BAS)
- International Club
- Latino Association
- PRIDE Gay and Straight Alliance
- Hilel (Jewish Student Organization)

### Music Clubs

- Concert Ensemble
- Gospel Choir
- AUTV
- Enthymion Yearbook
- Gargoyle Literary Magazine
- The Tower, Student Newspaper
- AU College Radio

### Service/Special Interest Clubs

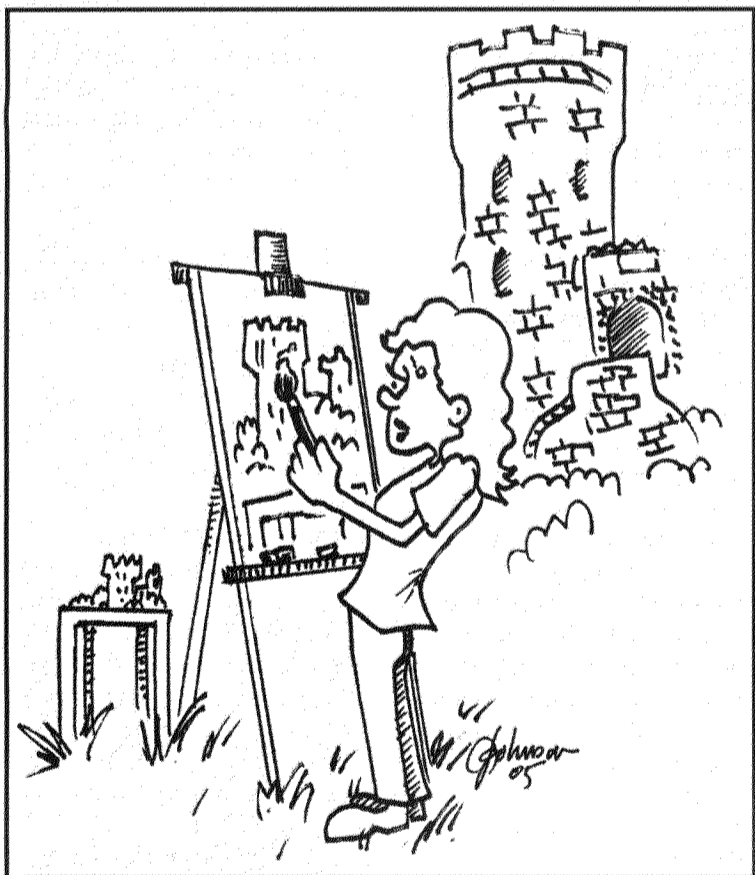
- Arcadia's Association of Fine Arts (AAFA)
- Arcadia Special Athletes Association (ASAA)

### DIFFERENCE

- Habitat for Humanity
- Interact
- Knight Club (dance)
- Peers
- Politically Incorrect
- Society for Castle Restoration (SCR)
- Student Activist Club
- Students Against Destructive Decisions (SADD)
- Student Alumni Association (SAA)
- Student Environmental Action Coalition (SEAC)
- Student Programming Board (SPB)

### Academic Clubs

- Alpha Sigman Lambda (continuing education)
- Chi Apha Epsilon (ACT101/Gateway)
- Education Club
- Kappa Delta Pi (education)
- Phi Alpha Theta (history)
- Phi Beta Delta (international scholars)
- Phi Kappa Phi (AU Honor Society)
- Phi Sigma Tau (philosophy)
- Pi Delta Phi (French)
- Pi Sigma Alpha (political science)
- Psi Chi (psychology)
- Sigma Bea Delta (business administration)
- Sigma Delta Pi (Spanish)
- Sigma Tau Delta (English)
- Sigma Zeta (computer science and math)
- Student Physician Assistant Association
- Student Physical Therapy Association (SPTA)



### Hours of operation for campus hotspots

#### Landman Library

Monday-Thursday: 7:00am-2:00am  
Friday: 7:00am - 7:00pm  
Saturday: 10:00am - 10:00pm  
Sunday: 1:00 pm - 2:00am  
\*Check Library for day-to-day and holiday schedule.

#### The Chat

Monday-Friday: 7:30am-12:00am  
Saturdays and Sundays: 5:00 pm - 12:00 am.

#### Java City

Monday-Thursday: 7:30 am-7:30 pm  
Friday: 7:30am - 1:00pm. Java City is closed on Saturday and Sunday.

### Upcoming Events

- September 10  
Drive-In Movie: The Longest Yard, 9:00 pm on the Soccer Field.
- September 17  
Coffeehouse Double Header, 8:00 pm in the Chat.
- September 21  
Senior Year Preview, 4:00 pm  
"The Role of Latino and Black Organizations in Colleges", 7:00 pm in the Chat.
- September 22  
Comedy Double Header, 8:00pm in the Chat.
- September 23, 25, 26  
Movie: Batman Begins, 9:00 pm in the Chat.
- September 24  
College Day on the Parkway, 10:00 am - 5:00 pm

## Numbers to Know

- On-Campus Emergency ... x2999
- Public Safety ... x2900
- Act 101 ... x4087
- Advising ... x2922
- Athletics ... x2194
- Billing ... x2958
- Bookstore ... x2317
- Cable, Phones, Laundry ... x2941
- Career Services ... x2972
- Community Service ... x4000
- Conference Services ... x2998
- Counseling ... x4020
- Jeff Ewing, Dean of Students ... x2934
- Disabilities Services ... x4086
- Food Services ... x2052
- Health Services ... x2966
- Housekeeping ... x2853
- International Student Services ... x2867
- Intramurals ... x2892
- I.T. Help Desk ... x2898
- Library ... x2973
- Maintenance ... x2854, x2992
- Multicultural Affairs ... x4088
- Residence Life ...
  - Rebecca Adams ... x4127
  - Jessica Hickey ... x2890
  - Nick Luchko ... x4126
  - Christine Passiglia ... x4026
  - Josh Stern ... x2086
- Student Activities ...
  - Dian Taylor-Alleyne ... x4044
  - Nick Smith ... x2798
- Tutoring ... x4086

## College Day on the Parkway

Don't miss College Day on the Parkway Saturday, Sept. 24. Join over 2,000 national and international college students for a day of exhibitions, special programs, and tours at some of Philadelphia's most impressive cultural centers. Admission to all events free with your college I.D.

Transportation from Arcadia University to Center City will be provided. Keep an eye open for more information!

Can't quite find what you're looking for?  
**Start your own club!**

## 2005 Fall Sports Schedule

| MEN'S SOCCER                                 |  |
|--|--|
| 29... Rutgers-Camden... H... 7 p.m.          |  |
| <b>SEPTEMBER</b>                             |  |
| 9... Phila. Biblical... 5 p.m.               |  |
| 10... Rutgers-Camden... A... 7:15 p.m.       |  |
| 14... Kean... A... 4:30 p.m.                 |  |
| 17... Marywood... Home... 1 p.m.             |  |
| 20... York... A... 4 p.m.                    |  |
| 22... Gwynedd-Mercy... A... 4 p.m.           |  |
| 24... College Misericordia... A... 3:30 p.m. |  |
| 28... Wesley... H... 4 p.m.                  |  |
| <b>OCTOBER</b>                               |  |
| 1... Neumann... A... 3 p.m.                  |  |
| 3... DeSales... H... 4 p.m.                  |  |
| 5... Eastern... H... 3:30 p.m.               |  |
| 8... Stockton... A... 3 p.m.                 |  |
| 12... John Hopkins... A... 7 p.m.            |  |
| 15... Alvernia... A... 3 p.m.                |  |
| 19... Drew... A... 7 p.m.                    |  |
| 24... Immaculata... H... 3 p.m.              |  |
| 26... Cabrini... H... 3 p.m.                 |  |
| <b>NOVEMBER</b>                              |  |
| 2... PAC Championship... TBA                 |  |
| 5... PAC Championship... TBA                 |  |
| <b>WOMEN'S SOCCER</b>                        |  |
| <b>SEPTEMBER</b>                             |  |
| 10... Virginia Wesleyan... 2 p.m.            |  |
| 11... Consolation... 1 p.m.                  |  |
| Championship... 3 p.m.                       |  |
| 15... Phila. Biblical... A... 4 p.m.         |  |
| 17... Marywood... A... 1 p.m.                |  |
| 21... Gwynedd-Mercy... A... 4 p.m.           |  |
| 24... Eastern... H... 1 p.m.                 |  |
| 29... Immaculata... H... 4 p.m.              |  |
| <b>OCTOBER</b>                               |  |
| 1... Alvernia... H... 1 p.m.                 |  |
| 5... College Misericordia... H... 4 p.m.     |  |
| 8... Cabrini... A... 1 p.m.                  |  |
| 10... Albright... A... 4 p.m.                |  |
| 15... Wesley... A... 1 p.m.                  |  |
| 18... King's... H... 3:30 p.m.               |  |
| 22... Cedar Crest... A... 1 p.m.             |  |
| 25... Neumann... H... 3 p.m.                 |  |
| 29... PAC Championships... TBA               |  |
| <b>NOVEMBER</b>                              |  |
| 1... PAC Championships... TBA                |  |
| 5... PAC Championships... TBA                |  |
| <b>VOLLEYBALL</b>                            |  |
| <b>SEPTEMBER</b>                             |  |
| 9... Muhlenberg Tournament... A... TBA       |  |
| 10... Muhlenberg Tournament... A... TBA      |  |
| 13... PSU-Berks... A... 7 p.m.               |  |
| 17... Albright Tournament... A... 9 a.m.     |  |
| 21... Immaculata... H... 7 p.m.              |  |
| 23... Gwynedd-Mercy... A... 7 p.m.           |  |
| 26... Marywood... A... 7 p.m.                |  |
| <b>OCTOBER</b>                               |  |
| 1... Eastern... H... 1 p.m.                  |  |
| 3... Immaculata... H... 4 p.m.               |  |
| 5... Cabrini... H... 4 p.m.                  |  |
| 11... Gwynedd-Mercy... A... 4 p.m.           |  |
| 15... Alvernia... A... 1 p.m.                |  |
| 18... Widener... A... 7 p.m.                 |  |
| 22... College Misericordia... A... 4 p.m.    |  |
| 25... Philadelphia... H... 3:30 p.m.         |  |
| 29... PAC Championships... TBA               |  |
| <b>NOVEMBER</b>                              |  |
| 2... PAC Championships... TBA                |  |
| 5... PAC Championships... TBA                |  |
| <b>FIELD HOCKEY</b>                          |  |
| <b>SEPTEMBER</b>                             |  |
| 10... Marywood... H... 1 p.m.                |  |
| 15... Wesley... A... 4 p.m.                  |  |
| 20... Cedar Crest... A... 4 p.m.             |  |
| 24... Neumann... H... 1 p.m.                 |  |
| 26... Delaware Valley... A... 4 p.m.         |  |
| 28... Rosemont... A... 4 p.m.                |  |
| <b>OCTOBER</b>                               |  |
| 1... Eastern... H... 1 p.m.                  |  |
| 3... Immaculata... H... 4 p.m.               |  |
| 5... Cabrini... H... 4 p.m.                  |  |
| 11... Gwynedd-Mercy... A... 4 p.m.           |  |
| 15... Alvernia... A... 1 p.m.                |  |
| 18... Widener... A... 7 p.m.                 |  |
| 22... College Misericordia... A... 4 p.m.    |  |
| 25... Philadelphia... H... 3:30 p.m.         |  |
| 29... PAC Championships... TBA               |  |
| <b>NOVEMBER</b>                              |  |
| 2... PAC Championships... TBA                |  |
| 5... PAC Championships... TBA                |  |

## Arcadia responds to Hurricane Katrina

Dr. Greiner addresses the community about AU hurricane relief fund

Dear Members of the Community,

I am sure that you join me as I watch with horror the tragedy that continues in the southern part of our country. We all wonder what we can do to help, and many have already contributed to charities involved in relief.

I have also received a number of calls and notes expressing interest in the possibility of some members of our community becoming more involved directly and wonder if there are ways to get funds to help them in their efforts. One faculty member suggests the possibility of taking a group of counseling students down to help with crisis counseling. A staff member suggests that a service learning trip during vacation time could help rebuild homes. Another faculty member wants to donate a travel home for a family to live in, but needs money to outfit it and provide gas to get it to the south. And I am sure there are others with similar ideas.

We have decided to establish a restricted fund at the university for this purpose. Your (tax-deductible) donations to the fund would help defray costs associated with direct service actions taken by members of our community to help these folks in such need. All of the money will go for this purpose. Should there be any left, it will be used for service learning activities of our students. I encourage you to consider this as one way to make a difference. Make out checks to Arcadia University and be sure to indicate on the check that this is for the hurricane relief fund. The University Advancement Office (Blankley Hall) will accept the funds and ensure that the money is restricted for this use.

Thank you,  
Jerry M. Greiner  
President

Students interested in participating in Hurricane Katrina service action projects should contact Cindy Rubino at [communityservice@arcadia.edu](mailto:communityservice@arcadia.edu) for more information.

## Arcadia Theatre's 2005-2006 Season

The Little Theatre at Arcadia is once again presenting the community with a wide array of theatrical productions for the upcoming 2005-06 school year. The following information for these productions, and more information about the theatre program can be found online at [www.arcadia.edu](http://www.arcadia.edu).

### Mainstage Plays

Performance Location: the Arcadia Theatre

Ticket prices: \$6 for Arcadia Students, \$12 for Alumni, \$16 for General Admission.

### Buried Child

by Sam Shepard  
Performance Schedule: October 20 - 30, 2005; Thursday, Friday and Saturday at 8 p.m. & Saturday and Sunday at 2 p.m.

It's a curious homecoming for Vince, the son nobody seems to remember. His girlfriend can't stop laughing at his apple-pie dream of a childhood home - until she steps inside and meets the half-crazed relatives. Violence is never far from the surface in this claustrophobic domestic world, and the unexpected reunion triggers catastrophe.

### Electra

by Sophocles  
Performance Schedule: November 17 - December 4, 2005 (No shows during the week of the Thanksgiving Holiday); Thursday, Friday and Saturday at 8 p.m. & Saturday and Sunday at 2 p.m. Friday 10 a.m. matinee available for large groups.

This classic Greek Tragedy is a story of retribution. Years ago, Electra's sister Iphigenia was sacrificed to the Gods by her father, Agamemnon. He, in turn was betrayed and brutally murdered

at the hands of his wife, Clytemnestra. The passing years have been hard on Electra and the bitter memories of these losses are still as fresh as her desire for vengeance. Tortured by grief and betrayal, the return of her brother, Orestes, enables the enraged Electra to exact her revenge.

### Keely and Du

by Jane Martin  
Performance Schedule: February 23 - March 5, 2006; Thursday, Friday and Saturday at 8 p.m. & Saturday and Sunday at 2 p.m.

Keely, a young woman who has become pregnant as a result of a rape, is kidnapped by an anti-abortion organization, "Operation Retrieval." Du, a registered nurse working for the organization, is assigned the task of watching after Keely for both medical and security purposes. Keely and Du is neither a pro-choice or right-to-life argument. Instead, the play forces the audience to view both sides of the debate through the eyes of sympathetic characters.

### Little Shop of Horrors

Book and Lyrics by Howard Ashman  
Music by Alan Menken  
Based on a film by Roger Corman, Screenplay by Charles Griffith

Performance Schedule: April 13 - 23, 2006; Thursday, Friday and Saturday at 8 p.m. & Saturday and Sunday at 2 p.m. Friday 10 a.m. matinee available for large groups.

It's everyone's favorite boy-meets-girl, plant-eats-world phenomenon. Meek, mild-mannered, out-of-luck Seymour Krelbourn has just discovered an exotic little plant with a strange and unusual appetite. The plant is growing remarkably fast—and

so is Seymour's love for Audrey, his co-worker at the flower shop. But she has a boyfriend...and the plant has a bloodthirsty secret that threatens the entire planet. The feeding-frenzy begins, as Seymour becomes a celebrity and the plant becomes a larger-than-life sensation.

### In the Chat Series

Performance Location: the Chat, in the lower level of the Dining Hall.

Ticket prices: Free for Arcadia Students, \$5 Alumni, \$10 General Admission

### Picasso at the Lapine Agile

by Steve Martin  
Performance Schedule: December 2 - 4, 2005; Friday, Saturday and Sunday at 8 p.m.

Imagine the young Picasso, just prior to painting his landmark work Les Femmes d'Alger, having a drink with the young Einstein who is on the verge of publishing his theory of relativity. Throw in a guy named Schmendiman who has his own quirky theories about how to make an impact on the 20th Century and a few other denizens of turn of the century Paris and you have a formula for fun

### Savage in Limbo

by John Patrick Shanley  
Performance Schedule: March 31 - April 2, 2006; Thursday, Friday and Saturday at 8 p.m.

An arresting and brilliantly inventive play which moves from comedy to near tragedy as it explores the hopes and dreams of a group of rootless young "losers" who congregate in an anonymous Bronx bar, hoping to find respite from the drabness of their lives.

### Football at Arcadia

DO YOU THINK ITS... DANGEROUS?



save a tree...  
recycle this newspaper