

Beaver News

Vol. XVII, No. 3 BEAVER COLLEGE, JENKINTOWN, PA.

Friday, October 13, 1950

Freshmen Elect Leader As Song Contest Nears

Mary Jane Slade was chosen as the first Song Contest leader for the class of '54 in the class meeting, held October 3 in Jenkintown gymnasium.

The new leader is from Ardmore, Pennsylvania. She is majoring in music this year at Beaver. As yet, the accompanist for the freshman class has not been chosen.

Class Leaders Named

The leaders and accompanists for the other classes are as follows: sophomores: Barbara Smith and Nancy Schaeffer; juniors: Joan Silberman and Louise Reddy; seniors: Ernestine Barton and Betty Jane Tomlinson.

The excitement and fervor of Song Contest has already begun on the campus. All the classes have begun writing words and music for their victory songs.

Rehearsals Start Soon

Rehearsals for all classes will begin the first of November. Song Contest will be held on November 21, in the traditional place, Murphy Gymnasium. A bon-fire will be held after song contest, sponsored by Tradition.



Mary Jane Slade, Freshman Song Contest Leader

Class Officers Named By Sophs In Recent Vote

Elections are over (at least temporarily) and another top-notch group of Beaver girls are about to take office. The Nominating Council has posted the results of the voting that took place on Tuesday, October 10, in the lobby of Beaver Hall.

Sophs Elect Officers

In the sophomore class all officers were elected. According to a new plan, the officers of the sophomore class are to be elected in October of each year. The juniors voted for a representative on Nominating Council and the Athletic Association representative. The seniors voted for Student Council representative and senior week chairman. As is customary, the freshman elections will be held in February.

Langdon is Soph Prexy

Congratulations are to be extended to Barbara Langdon, new president of the sophomore class, as well as to the others that the class of '53 chose as leaders. Betsy Schneider is to be vice-president, Beverly Gifford, secretary, and Jacqueline Strohauser, treasurer.

Soph Representatives Chosen

Sophomore representatives on Nominating Council are: Mindelle Hershberg, Patricia Jaynes, and Hannah Weiner. Honor Council representatives are: Suzanne Burnison, Diana Katnack, and Patricia Martin. The representative on the Athletic Association is Mary M. Hill, and Molly Kern is to be Y.W.C.A. representative.

Bauer is on Nominating Council

The class of '52 elected Frances Bauer as the junior class representative on Nominating Council. Jane Oswald was chosen by that group as Athletic Association representative.

The senior class elected two girls to office. Betty Jane Tomlinson will be Student Council representative, and Jacqueline Jackson will be Senior Week chairman. As Senior Week chairman, Jackie will be in charge of the Senior Ball, Class Day, and Commencement activities as well as Lantern Chain.

Art Masterpieces To Be Exhibited In Museum Show

A Diamond Jubilee Exhibition will be held in the Philadelphia Museum of Art between November 4 and February 11, in celebration of the 75th anniversary of its founding. This exhibition will include 100 paintings and 100 drawings lent by the Metropolitan, National, Boston, Chicago, and twenty-five other museums, and by private collectors.

The collection, valued at \$17,000,000 and covering the whole history of western art, will contain such famous paintings as Mantegna's "Adoration of the Shepherds," Titian's "Venus and the Lute Player," "Girl at an Open Half-Door," by Rembrandt, the "Bathers" by Cezanne, the Van Eyck "St. Francis," and Rubens' "Flight of Lot and His Wife."

Among the drawings at the exhibition will be the only three da Vinci drawings in America and the only drawings by Michelangelo in America—"Studies for the Libyan Sibyl."

Other works will include those by Botticelli, El Greco, Goya, Leonardo, Manet, Matisse, Picasso, Raphael, Renoir, Van Dyck, Vermeer, Veronese, and Watteau.

Pollock Will Lead Week Of Religious Emphasis Starting On October 16

The Reverend Clifford G. Pollock, who is minister of the First Presbyterian Church of Morrisville, Pennsylvania, will be the guest speaker at all services for Religious Emphasis Week, to be held from Monday, October 16, through Thursday, October 19.

Religious Emphasis Week is sponsored each year by the Presbyterian Board of Christian Education and the Board of National Missions. It is observed in all Presbyterian colleges as a period of intense religious activity, to make the students more aware of their respective faiths and to strengthen their religious convictions.

Mr. Pollock's general theme will be "Your Life — Now." He will speak at the regular chapel services to the whole student body on Monday, Wednesday, and Thursday evenings. On Tuesday, he will speak in the regular assembly period, to the juniors, seniors, and day students, and on Tuesday evening, to the freshmen and sophomores. The individual topics of his discussion are as follows: Monday, "What it Takes to Make a Life"; Tuesday afternoon and evening, "How Old Are You?"; Wednesday, "Your Three Great Choices" (Mate—Religion—Work); Thursday, "If I Sat Where You Sit."

On Thursday night, following the regular chapel service, there will be a voluntary communion service in the chapel and also meetings of the different denominational groups.

POLLOCK STORY

(Continued on Page 3, Col. 2)

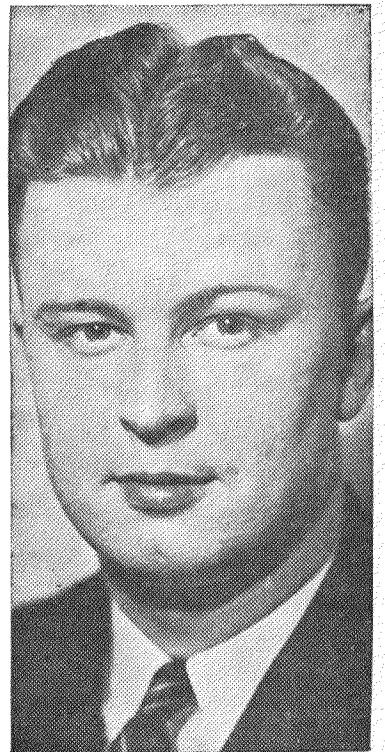
Administration Installs T. V. In Beaver Hall

A new television set has been installed in Green Parlors, Beaver Hall, by the administration, as of Monday, October 2.

The college would have bought a set sooner, but hesitancy resulted because of fear of dormitory friction on the question of where to place the set. For financial reasons, it is impossible, at this time, to place a set in each individual dormitory.

Finally, it was decided that Beaver Hall, being the center of activities on campus, would be the logical dormitory in which to place the television. The administration felt that the student body would rather have one set than have none.

The set is situated in Green Parlors in such a way that one may see the sixteen-inch picture from almost anywhere in the room.



The Reverend Clifford Pollock

Kistler Is Cited Here By Trustees

Dr. Raymon Kistler, president of Beaver College, was cited for his "brilliant leadership" by the Board of Trustees following the completion of his tenth year as president.

The board noted the numerous problems which he faced upon assuming this responsible position and stated that "a leader of less ability would have considered the situation hopeless, but by perseverance and exceptional ability, Dr. Kistler brought the college to higher levels of efficiency and gave it a stronger financial foundation."

In recognizing Dr. Kistler's success over the past decade the Board of Trustees realized the importance of the credit which he has brought to Beaver through the various positions of responsibility which he has held and through the emphasis he has put on the importance of religion in college life.

The Board emphasized Dr. Kistler's accomplishments in the field of religion, stressing his endeavors to promote higher ideals among the students and his service through participation on various church boards.

Rian Attends Penn State Ceremonies

As vice-president of Beaver College Dr. Edwin H. Rian has been representing the college at various church services and ceremonies held by other colleges.

He was present at the inauguration of Milton Eisenhower as president of Pennsylvania State College on October 4 and 5. On Wednesday, October 4, Dr. Rian attended a reception for the representatives of 250 colleges and universities as part of the inaugural celebration.

Gen. Eisenhower Attends

General Dwight D. Eisenhower and Mrs. Eisenhower were present at the inaugural ceremonies, which took place on the morning of October 5. Following a luncheon held at the Nittany Lion Inn, State College, the ceremonies and festivities ended with an Inaugural Ball held that evening.

Dr. Rian also gave the first of a series of 12 lectures on the purpose and plan of the church last evening at St. Paul's Lutheran Church in Glenside. The series will continue for six successive Thursday nights for the Christian Leadership Institute and is sponsored by six Glenside churches.

Rian Guest Preacher

Dr. Rian acted as guest preacher of the Bala-Cynwyd Presbyterian Church of the Covenant on October 1, and on October 8 he was guest speaker at the Grace Presbyterian Church of Jenkintown.

Safe Place Offered For Friday, the 13th

For those individuals who are superstitious about Friday, the 13th, the Beaver Hall Dining Room will be the safest place to hide. Tradition is sponsoring its first dance of the year tonight at 8:30, starting off a fun-packed social calendar expected to be the best ever.

A blind-date bureau for the dance has been set up by Louise Reddy '52, who has solicited dates from Lehigh, La Salle, Penn., and Temple. Barbara Lawrence '51 will see to it that no one goes hungry, and Adelia Mease '52 has announced that there will be some lively entertainment.

The sophomores are represented in the decoration department with Caroline Warager and Claire Everding in charge of adding a little color to the dining room.

At a recent meeting of Tradition, Gayle MacCracken '52, this year's chairman, emphasized the fact that Tradition is an organization of which every Beaver student is a member. She urged those present to encourage others to come to the meetings and participate in the plans for the remainder of the social calendar.

Students' Unawareness Of Current News Is Bad

There has been a great deal of discussion recently on campus about the lack of awareness of current events among the Beaver students. Dr. Kistler commented on the problem in a talk in chapel. At the last S.G.A. meeting a solution was proposed to try to make the students more aware of what is going on in national and international affairs. The suggested solution was to have short weekly meetings, perhaps on Thursday evenings after regular chapel, devoted to speakers on current events and to discussion. In order to make it worthwhile to invite outside speakers, it was suggested that these meetings be compulsory. The students were in favor of the idea but not in favor of making the meetings compulsory.

The importance of knowing what is going on in the world is well known to every student. Anyone here at Beaver could write a long theme on the subject. The importance of keeping up with the news is accepted by everyone but the usual complaint is, "Oh, I know that I should, but I just never seem to find time to look at a paper." Most of the students, however, seem to be well up on the latest adventures of Dick Tracy. Perhaps Dick's deeds just spread by the well known grapevine. Another excuse offered is that a newspaper costs money. So do the movie magazines that are always in the dorms.

The real answer to the lack of knowledge is plain laziness. Every student has access to a news source; a paper, a radio, or the television set. Television certainly kept Beaver well informed on the games of the Phillies and the Yanks and can do the same for other events.

Regular meetings are an excellent way to become informed on a phase of a problem, but it would be impossible to intelligently cover and discuss all the news of a week in a short time. Also if the students wanted to have any type of discussion, they would have to know a little about the subject in order to ask intelligent questions. It would be foolish merely to pay outside speakers to give weekly news summaries. It is also up to each student to spend a few minutes a day listening to the radio and reading the newspaper. If a majority of the students could become news-conscious, there would be a demand for speakers to present background information.

Marjorie Hicks

Let's Be Realistic!

I can see no benefits to be gained by membership in the N.S.A. The purposes of the N.S.A. are, undoubtedly, high flown and lofty—the kinds that appeal to idealistic students.

But, let's be realistic! The aims of the N.S.A. are: to maintain academic freedom, improve student welfare, improve student government associations, to promote international understanding and so forth. All of these things we have had so long at Beaver that we take them for granted.

Now, let's look at the program planned for the year by the Beaver division of N.S.A.—a purchase card system to be established to give students discounts on purchases, reduction on concert tickets, a national art tour to visit Beaver, further interest in current events and speakers, establishment of a leadership training program, a faculty rating system, improvement of S.G.A.

None of these items on the menu are going to further the so-called aims, and with the exception of the art exhibit, all the other items seem unnecessary or are already established at Beaver. We have an active Forum to bring speakers to the Beaver campus, and a current events program has already been launched. We have an excellent Student Government. We have heard of the student discount arrangement for three years, and have never seen it in operation, and fail to see why we, because we're students, should have a special discount. We also have a brand new system to provide leadership training. We must admit the faculty rating idea is good.

For three years Beaver has re-echoed with the words "N.S.A." For three years we have heard what N.S.A. is going to do for Beaver. For three years nothing has happened. And—for three years the students have paid almost \$200 per year to cover N.S.A. dues, N.S.A. conference fees, and the like.

If that \$200 per year were used to support Beaver's adopted child, or to further the World Student's Service Fund, or to buy books for the library to further our own education—then we could see the results. Let's be realistic!

(To any N.S.A. supporters: the editor's mailbox is 456, and the "Letters to the Editor" column is yours.)

Mary Ann Raulerson

Sadler's Wells Thrills Crowd

Reviewed by CONNIE SHAFFER

The Sadler's Wells Ballet Company recently opened its cross-country tour with a three-day appearance in Philadelphia. Although stories of war, wholesale destruction, and death are being splashed across the front pages of newspapers daily, the overwhelming crowd at the opening night is proof that there is still a vast number of people who seek the beautiful through the medium of the arts. Margot Fonteyn as the prima ballerina is undoubtedly one of the greatest "danseuses" of the times, and her magnificent performance clearly substantiates that claim.

The program presented consisted of four ballets, each in an entirely different mood. The pieces were Frederick Ashton's "Les Patineurs", and "A Wedding Bouquet," "The Rose Adagio" from Tchaikovsky's "Sleeping Beauty," and for the final piece, Mr. Ashton's "Dante Sonata."

The opening piece, "Les Patineurs" (The Skaters) is set to the enchanting music of Giacomo Meyerbeer. The setting of an imaginary little pond, the gliding, skater-like movements of the dancers, and the charmingly Victorian costumes by William Chappel, helped to make the piece completely delightful. The imaginative choreography of Frederick Ashton was simply yet graciously carried out by the whole ensemble.

"A Wedding Bouquet," the piece which followed after a short intermission, set the stage alive with its colorful pageantry. The presentation is Gertrude Stein's impressions of a country wedding, and was for the most part light and fanciful. The inebriation of Josephine, one of the wedding guests, and the gracefully comic cavortings of Pepe, the dog, lend a thoroughly humorous air to the production.

The score by Lord Berners is exceptionally charming, and added a lilting quality to the piece. The rather unusual course of narration of Miss Stein's words by Robert Irving was extremely effective, and although Mr. Irving's voice was somewhat monotonous, it gave the audience a fleeting, yet accurate picture of each of the main characters.

Moir Shearer danced the role of the slightly demented Julia. Her appearance was ethereally transparent, but her performance was satisfactory rather than distinguished.

"The Rose Adagio" featuring Margot Fonteyn was by far the best example presented of the ballet in its true classic form. Miss Fonteyn was utterly captivating in her too brief appearance, and she dazzled the audience with her glorious performance. She dances with such artistry that the most difficult figures seem effortless, and her charm, grace, and perfection are unmatched.

Perhaps the most memorable presentation was the last of the quartet, the "Dante Sonata." Set to the music of Franz von Liszt's "Apres une Lecture de Dante," the ballet portrays the struggle between the forces of good and evil for ultimate supremacy. The piece is almost melancholy, with perhaps a trace of the morbid.

Again, Moira Shearer presented her role in a very adequate, accomplished manner, yet as in "A Wedding Bouquet," it appeared uninspired. Mr. Ashton's choreography is classic in style, and it is executed with extreme skill and beauty.

The orchestra under the competent direction of John Hollingsworth performed creditably. Jean Gilbert, the piano soloist for the "Dante Sonata," played with an obviously sincere appreciation of the score.

On the whole, the Sadler's Wells Ballet troupe performed with flawless, metronome-like precision, affording its audience a rare treat of beauty and fantasy in a materialistic world.

Frankly

by MYRN

Five hundred and fifty-one thanks to the Administration! Your recent gift to the students is deeply appreciated. That T.V. set couldn't have been presented at a more appropriate time. For the great majority of students, it was the first time we've ever seen a World's Series. Naturally we wanted the best team to win. Unfortunately it wasn't the home team this time.

We walked in to lunch the other day and discovered that our favorite table was missing. After a moment of observation we discovered that a whole row of tables was missing in the Beaver dining room. We were informed by our smiling student hostesses that the Slater System has hired fewer waitresses this year and it was decided that 10 girls should be seated at a table again. So far the arrangement seems to work out quite well. It's really amazing—you can actually walk around in the dining room—even though you tip the scales at a little over 105!

First confusion, then hazing. Do we hear any complaints? Of course not. On the whole, Fun Week was carried out in good taste. Congratulations, Frosh, your newness and greenness is beginning to fade.

And while we're thinking of firsts for the freshmen, we think of lasts for the seniors. What a pity . . . no more Founders' Day services to attend. It will be a trifle hard to adjust to a Christmas without a two and a half week vacation to go with it!

Stop! Look! It's Indian Summer. (Ed's note: Brrr, Tomys missed the boat again.) From Gals in their moccasins to Mother Nature's gorgeous display, how can you miss it. Isn't the surrounding countryside a truly colorful scene? The hockey team went up to Stroudsburg recently and was quite impressed with the beauty of the October ride. God is good.

Regards

Calendar of Events

THEATRE

Hilda Crane—Locust. Play starring Jessica Tang formerly of "A Streetcar Named Desire". Opens October 16.

Guys and Dolls—Shubert. Musical based on a Damon Runyon story about Broadway.

The Relapse—Walnut. London Restoration comedy sponsored by the Theatre Guild.

A Streetcar Named Desire—Erlanger. Revival of well-known Tennessee Williams drama starring Louise Pratt.

Mister Roberts—Forrest. Last weeks for this popular comedy.

Out of This World—Shubert. A new Cole Porter musical opens on Saturday evening, November 4 for a 3-week engagement.

CINEMA

Mister 880—Fox. Story of a lovable old counterfeiter who baffles the Secret Service. Played by Edmund Gwenn.

The Walls of Malapaga—Princess. French-Italian drama with remarkable characterization.

MISCELLANEOUS

Sir Benegal Rau—Academy of Music. Head of India delegation will be featured Forum speaker on "What Prospects for Peace?" Friday, October 13, 8 p.m.

Ice Capades of 1951—The Arena. October 18 to November 4.



Mike's lab. course in T.V. tuning in session

Zany Inventions Are Nothing New

by LAUREL HARRIS

Television has arrived, and we're all welcoming enthusiastically. We realize that through the most recent Beaver addition we will be able to spend countless hours of entertainment. However, television is just one of thousands of comforts we can enjoy. It seems to bad that we never get a chance to learn about some inventions that were just too unusual and impractical to last. Let's take a look . . .

In 1876 the dark bed was recommended to parents of crying babies. The child was put in the bed and the door was closed. Sleep usually came to the baby, but so did suffocation. Another type of bed that some masterminds invented was the so-called sweat bed. It appeared in shops in Amsterdam, Holland, in about 1878. A small stove was at the foot of the bed and was connected to pipes under the springs. Water heated quickly in the stove and travelled through the pipes. Very rarely was a fever reduced, but the patient always suffered from serious burns.

Hachberger's telegraph-wire bicycle came out in 1890 and was supposed to replace the railway. The bicycle with tireless wheels, would skim along the telegraph wires at 15-20 miles per hour. Hachberger felt that it would be wonderful to travel high above the beautiful landscape in solitude—but his idea was never patented. During that same era when pinched waist-lines were in fashion, an air conditioned armchair appeared. Two large fans were set in rapid motion as soon as the woman suffering from "tight corset" sat down.

We can see that people are constantly trying to better our way of life. Some are successful, some are not, some make money, and others don't. There's still room for improvement, though—have any ideas?

Beaver News

Published Bi-Monthly by Members of the Student Body at Beaver College, Jenkintown, Pennsylvania
Subscription Rate \$4.00
Beaver College, Jenkintown, Pa.

The "Beaver News" is a publication by and for Beaver students and does not necessarily reflect the opinion of the administration

Editor-in-Chief Mary Ann Raulerson

EDITORIAL STAFF

Make-Up Editor Suzanne Coone

News Editor Ann Snee

Feature Editor Marilyn Zor

Copy Editors Shirley Gubb, Gayle MacCrack

Sports Editor Rosemary Steunenberg

Art Editor Joan Bertram

Photography Editor Virginia Fulmer

EDITORIAL ASSISTANTS

Nancy Lindholm, Mildred Knepperger, Constance Shaffer

Myrna Tomys, Iris Yeager

NEWS STAFF

Ann Marie Assetto, Laurel Harris, Lucille Hudscot, Deborah Kimmel, Carolyn Miller, Diane Wollitzer

BUSINESS STAFF

Business Manager Carol Irwin

Advertising Manager Dorothy Reiser

Advertising Staff Janet Morrison

Circulation Manager Barbara E. Brown

Circulation Staff Carolyn Davis, Betsey Hamilton

Typists Beverly Gifford, Barbara McKay, Betty Jahn

Faculty Adviser Dr. Belle Matheson

Beaver Ties Stroudsburg 1-1 In Hockey Opener

Beaver College opened its hockey season Wednesday, October 4, by tying a strong East Stroudsburg team 1-1 on the opposition field. Last season East Stroudsburg was undefeated except for one tie with Temple.

Beaver was on the offensive most of the first half. It was in this half that Target Hill '53 scored Beaver's only goal. The tally was made on a slow push pass from Betty King '53 on a corner play to Target who let go a good drive for the score. The left side of the Beaver forward line could not do much throughout the game because of the wonderful playing of the East Stroudsburg right fullback and captain, Alma Carson. At the end of the first half Beaver led 1-0.

The second half proved to be quite a different story. East Stroudsburg was on the offensive and Beaver on the defensive. The biggest threat that East Stroudsburg has is Jane Moffet, its center forward who is rated as one of the best college hockey players in this area. Moffet was not able to do much in this game though because of the sensational marking of center half back Jane Oswald '52. Even though Moffet was marked well, she did get by Jane once and scored East Stroudsburg's goal which tied up the game. Phil Saxton '52 was kept busy at the goal trying to keep the ball out of the Beaver cage. It was her first time as goalie and she held her own. Neither team scored again and at the final whistle the score was 1-1.

The fielding during the game was poor because the field was bumpy, but nevertheless it was a fast game.

LINE-UP		
Beaver		Stroudsburg
Ulmer	L.W.	Crouse
Golder	L.I.	Maure
Deane	C.F.	Moffet
Hill	R.I.	Mitchener
King	R.W.	Bahesh
Butler	L.H.	Meritt
Oswald	C.H.	Mayer
Stevenson	R.H.	Hardenberg
Cooney	L.F.	Givens
McKelvy	R.F.	Carson
Saxton	G.	Janice

14 New Members Initiated Here By Key and Cue

"...to help discover talent and stimulate interest in all fields through the presentation of the annual production of this organization, and to promote interest in Key and Cue in the student body." This was a portion of the pledge taken by fourteen Beaver students, September 28, in the Day Students room on the occasion of their initiation into the Key and Cue honorary club.

Members of Key and Cue must prove themselves worthy by working actively in the production in one or more of these capacities; leading or minor role, chorus, manager, director, writer, composer, or as one of the stage crew. A girl is automatically initiated into the club if she has worked with the Key and Cue production for two years. Last year's comedy production was called "Art for Art's Sake." It was written by Joan Anderton '50 and Anne Dennen '50, with music written, arranged and directed by Shirley Mills Wilson '50. Plans are being made for this year's show which will be given in March. It will be a big production.

The officers of this year's Key and Cue are Louise Bucher Sharpe '51, president; Joan Silberman '52, vice-president; Jean Quig '52, secretary; Marion Stiles '52, treasurer; and Jane Topping '51, director.

The fourteen new members are Muriel Atkinson '51, Barbara Brown '51, Jane Ernstthal '51, Jeanette Grigg '51, Dorothy Hart '51, Carol Irwin '52, Gayle McCracken '52, Cynthia McKelvy '52, Faith Nightingale '53, Jean Quig '52, Beverly Rappaport '53, Barbara Smith '53, Barbara Stafford '51, Diane Wollitzer '53.

Play-Day, Dance Are Scheduled By Rifle Team

Beaver's varsity rifle team, National Intercollegiate Champions of 1950, held their second meeting on Tuesday, October 3, in Murphy Gym. The team has planned to have a cake sale in the near future, and also a dance which will be held on Friday, December 1, in conjunction with the Day Students' dance on December 2, making that weekend a very big one on the social calendar. A Play-day is also planned for the weekend of February 17.

In a few weeks the team will start shoulder-to-shoulder practice matches with local senior teams. The varsity matches start in February. The girls again hope to compete in the Nationals which are also in February.

The returning veterans are: Captain Jo Ann Lissfelt '52, Virginia Fulmer '51, Marjorie Hicks '51, Marilyn Johnson '51, Barbara Jones '52, Annette Lauer '51, and Louise Sharp '51. A few new girls have also turned out. Dorothy Johnston '51 is the manager and Mr. Linford Schober, instructor in riflery, is coach.

V.S. Romp Over Alumnae 6-3 On Wet Hockey Field

Under dismal, cloudy skies and a slight drizzle, the varsity hockey team, the "Beaver Bombshells," defeated the alumnae "Groaning Grannies" by the score of 6-3 on the Beaver hockey field on Saturday, October 7.

The first half of the game was dominated by the varsity. At the end of the first 25-minute half, the varsity had the advantage of a 4-0 score. Norm Golder '54 had made two goals, while Diane Deane '51 and Target Hill '53 had to their credit one goal apiece.

In the second half the alumnae began to strike back as Edna Scott '50 made a goal and Dot Kenyon '50 made another. However, Deane tallied one after a sensational pass from Target. Robbie Pauls '51 scored another for the varsity when she replaced Deane as center forward. During the last minute of the game Scottie of the alumnae made the final goal of the game. Play was not fast, but it moved up and down the field keeping the spectators in a constant state of frenzy. Even the World's Series game was ignored in favor of this contest between the varsity and alumnae.

LINE-UP		
Beaver		Alumnae
Ulmer	L.W.	Kenyon
Golder	L.I.	Drake
Deane	C.F.	Scott
Hill	R.I.	Steinson
King	R.W.	Miller
Sue	L.H.	Markwick
Oswald	C.H.	Kneezel
Rice	R.H.	Reinholz
Cooney	L.F.	Lauffer
McKelvey	R.F.	Trasmondi
Saxton	G.	Wearn

POLLOCK STORY

(Continued from Page 1, Col. 4)

During the week, Mr. Pollock will be available for private consultations, discussion-meetings in Beaver Parlors each evening after the chapel service, and at many Bible classes. On Monday night, he will be the guest of the Y.W.C.A. cabinet for dinner. On the following nights, students have the privilege of inviting him to be guest at their tables.

Dorothea Wirth '51, president of the Y.W.C.A. at Beaver College, is in charge of the week's activities. Joy North '51 is in charge of appointments for the private consulting interviews, and Aiko Miyake '51 will take care of requests from table hostesses.

Mr. Pollock is a graduate of New Castle, Pennsylvania High School. He graduated from Washington and Jefferson College in 1934, receiving the degree of bachelor of arts; and he received the degree of bachelor of theology in 1937 at the Princeton Theological Seminary.

A. A. Plans Hockey Play-Day October 14 For High Schools

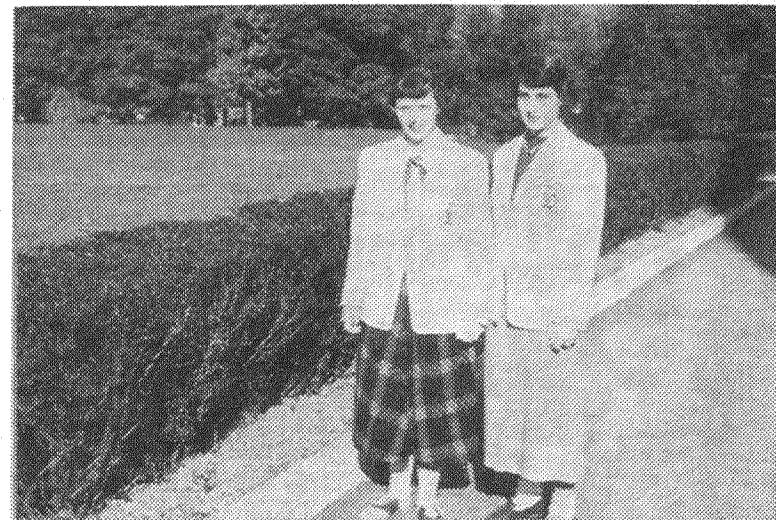
Beaver college will hold a hockey play-day tomorrow morning at 10 o'clock on the hockey field. Guests will include students from many high schools. This event is sponsored by the Athletic Association, and Molly Kern '53 and Rosemary Steunenber '53 will head it.

Students from eight high schools have been invited to attend. They are: Abington, Ambler, Cheltenham, Jenkintown, Upper Darby, Upper Moreland, Springfield, and Springfield Township. The teams will be split up so that the back-field of one will play with the forward line of another. There will be ten games, each ten minutes long and the winning combination will receive a maroon "B."

Each team will have a Beaver girl as its manager. The managers are: Joanne Casselberry '54, Dorothy Duckworth '53, Norma Golder '54, Patricia Jackson '52, Cynthia McKelvy '52, Peggy St. John '53, Peggy Sue '54, and Hannah Weiner '53. The games will be umpired by junior and senior physical education or and senior physical education majors.

SWIMMERS NOTE

Swimming Club practice on Monday nights from 8 to 8:45 at the Abington Y.W.C.A.



Rosemary Steunenber '53 and Molly Kern '53, co-chairmen of hockey play day.

Sports Round-Up

By BEBE

Well, the Yankees won the Series. (Ed's note: heh heh!) Oh, sorry this is hockey season isn't it? On to next week's schedule then.

Monday, October 16, Beaver's first and second teams will travel to Swarthmore for the beginning of a busy week of hockey. Wednesday, October 18, Penn State Center from Swarthmore will play the second team here at Beaver. On Friday, October 20, Beaver will play Westhampton away and Saturday, October 21, they will play William and Mary away.

Swarthmore has three or four promising freshmen in its line-up to fill in the gaps made by graduation, but the rest of the team consists of veterans. They are expected to have a strong team. Beaver beat Swarthmore last year by the score of 3-0 and in view of the varsity's fast play in the East Stroudsburg game Beaver should again be ahead at the final whistle.

The biggest games of the week are those with Westhampton (the women's college of the University of Richmond) and the College of William and Mary at Westhampton, and William and Mary respectively. The varsity and a few substitutes will leave by car early Friday morning, October 20, for Richmond, Virginia. Friday afternoon they will play Westhampton which is in Richmond. The team will stay in Richmond Friday night, and Saturday morning will travel to Williamsburg, Virginia, where William and Mary is located. After the game the girls will take a tour of the town of Williamsburg, which is a famous historical site.

Beaver has not been down to Williamsburg or Westhampton since 1946, at which time the varsity defeated both teams. However, William and Mary came to Beaver last winter to play basketball. They were defeated by the score of 44-20.

Divine, McKelvy Head Junior Prom Committee

by CONNIE SHAFFER

It's out of this world! What is? Well, according to Suzy Divine '52 and Cynthia McKelvy '52, it is this year's Junior Prom. Cynie and Suzy are co-chairmen of the prom which will be held on the weekend of February 23, 24, and 25 on the Grey Towers campus.

The committee chairmen have already been chosen for the dance. They are as follows: decorations, Emily Coxson '52 and Marion Stiles '52, co-chairmen; publicity, Carol Davis '52 and Greta Funk '52, co-chairmen; tickets, Dorothy Reigen '52; refreshments, Doris Kalfaian '52; orchestra, Ruth Dow '52; entertainment, Frances Bauer '52; and chaperones, Carol Dunham '52.

For Friday night, the committee has planned an informal dance to be held in Murphy Gymnasium. Saturday noon, there will be a luncheon for the girls and their dates at Grey Towers. In the afternoon, there will be an informal program of entertainment in Murphy Gym.

The climax of the weekend will be the traditional formal dance to be held in the Castle. Sunday, the girls will attend religious services in local churches with their dates.

The price of the full weekend ticket, which entitles its bearer to attend all the functions, is ten dollars for Beaver students and their dates. A split ticket, which consists of admission to the Prom on Saturday night only, is six dollars and fifty cents. This is for the benefit of friends not enrolled at Beaver, not for Beaver students.

Let's all support the Prom, and make it really "out of this world."

Alumnae Set October 18 For Meeting

The Philadelphia chapter of the Alumnae Association will hold as its first meeting, a dinner at Snellenburg's restaurant on Wednesday, October 18, at 6:30 p.m.

Mary Weiland Laufer '40, president, will preside, and entertainment will be provided by Helen Derhard '36 in the form of a travelogue on Mexico.

Alumnae Work Started

Other alumnae clubs in this area have already begun their work for this year. The Montgomery-Bucks County club held its first monthly business meeting on Monday, October 9. The meeting was preceded by a buffet supper held at St. Peter's parish house in Glenside.

Members of the executive board were in charge of the arrangements. The Montgomery-Bucks Chorus sang, and Mrs. S. Miller Mack, executive secretary of the Alumnae Association, was the guest of the club.

Future Plans Discussed

Plans for the future were discussed. Margaret Raiser, bazaar chairman, is forming committees in preparation for the Second Annual Bazaar to be held in December.

Stage, Script Contest Open In T. V. Field

A television script, stage and set model contest will be held at the Philadelphia Art Alliance Galleries from March 6 to March 31. The contest is sponsored by the Art Alliance in cooperation with ANTA.

Scripts, which may be either original or based on a classical play, should be submitted to the Art Alliance, 251 S. 18th Street, Philadelphia, by February 1, 1951. Scripts will be judged by Charles Robinson, CBS-TV; Roland V. Tooke, assistant general manager WPTZ; Jack Steele, WFIL program director, and Charles Vanda, vice-president in charge of television, WCAU-TV. First prize will be a television set, second prize, \$75.

Set Designs May Be Submitted

Television set design must be submitted to the Alliance by Sunday, March 4, 1951, between noon and 4 o'clock in the afternoon. Judging the contest will be William Craig Smith, NBC-TV; John Ozog, WCAU-TV, art director, Rene Heckman, WPTZ, art director, and Jack Nolan, Inquirer station art director. Sets may be for any published play. First prize will be a television set, second prize, \$75.

Stage set models, also to be submitted March 4, must be for any classic or contemporary play. They will be judged by well-known stage designers. First prize is \$100, second prize, \$75.

Prizes Awarded Over WFIL

Prizes will be awarded on a TV show over WFIL-TV, Tuesday evening, March 13. If in the opinion of the judges there is no entry worthy of a prize, none will be awarded.

Rules for the contest are posted on the bulletin board in the English office, and additional information may be obtained from Miss Judith Elder, assistant professor of speech. Any student is eligible to enter.

VALENTINE'S
FLOWERS AT THEIR BEST
WEST AVENUE, Jenkintown
Ogontz 7700-7701

FREEDMAN'S CLEANERS
TAILORS — FURRIERS
We Do Our Own Cleaning
Ogontz 1353 605 West Avenue, Jenkintown, Pa.

Beaver Seniors Practice-Teach In Local Area

Forty-one seniors majoring in the teaching curricula are doing student-teaching in the elementary, junior, and senior high schools in suburban Philadelphia and the Philadelphia area. Dr. John E. Dugan, chairman of the education department, has announced.

Eighteen elementary and secondary schools are assisting in the Beaver College student-teaching plan. Seven different subjects are being taught in the secondary schools.

Beaver students teaching in Abington High School are: Alice Birk, music; Gloria Klewenhagen and Pat Stevenson, physical education; and Gloria Meyer, social studies. Marylois Kennedy is teaching physical education at Abington Junior High School.

Teaching in the Ambler High School are: Virginia Brandner and Anna Gross, home economics; and Muriel Atkinson, social studies.

Four Beaver students practice-teaching in the Cheltenham High School include: Harriet Tollen Harris and Miriam Pitcairn, English; Anita Rohlf Roberts, mathematics; and Caryl Ulmer, physical education.

The Shoemaker School has the following girls teaching in the early childhood and elementary grades: Dorothy Bergano, Mary Huroodo, Catherine Razbornik Keiser, Betty Wenzel, and Ann Lawton.

Student teachers in Upper Moreland High School are: Florence Kugler, physical education; Barbara Lawrence, home economics; Barbara MacWilliams, mathematics; and Susan Van Horn, social studies.

Teaching in the Wyncote School are Doris Allen, kindergarten, and Betty Jane Alevisatos, second grade. Margaret Bayard is at the North Hills School, teaching kindergarten.

Jenkintown High School has three student teachers: Selma Plaxsun, Spanish; Elna Riker, English; and Suzanne Gunsalus, physical education.

Other Beaver students teaching in the early childhood and elementary grades include: Jane Breisch, Mary Ann Daniel, Judith Johnson, Sue Engel, and Audrie Max, Jenkintown Elementary School; Phyllis Greenberg and Jane Reed, Overlook School; Josephine Schupakus, Glenside School; and Barbara Paley, Shirley Musson, and Mary Lou Underdown, Germantown Friends' School.

Phillipa Day is teaching physical education at the Glenside-Weldon Junior High School; Alice James and Catherine Kilpatrick are also teaching students at Thomas Williams Junior High School.

Beaver is one of the few liberal arts colleges offering preparation for teachers through the entire range of elementary and secondary teaching. Following graduation, Beaver students are certified to teach in Pennsylvania, New York, New Jersey, and many other states. This student teaching plan gives prospective teachers actual classroom experience under master teachers.

Yorkwood Hairdressers
Greenwood Terrace Apts.
Greenwood & Florence Aves.
Jenkintown, Pa.
OGONTZ 9090

SHARPLESS
STATIONERY
GREETING CARDS
and SCHOOL SUPPLIES
213 YORK ROAD, Jenkintown

Diehls Are Hit Here

Reviewed by
MARY ANN RAULERSON

Margaret and William Diehl captivated their audience in a recent Forum recital. Mr. Diehl, a baritone, presented a varied repertoire accompanied by Mrs. Diehl.

In "Don Giovanni's Serenade" from Mozart's "Don Giovanni" Mr. Diehl's personality and control brought hearty applause.

Purcell's "I'll Sail Upon The Dog-star" proved a good medium for Mr. Diehl's voice. This selection called for full tones and a large range. Add these qualities supported by poise and exceptional stage presence, and you have Mr. Diehl's performance.

Mr. Diehl's acting ability was also evident in his selections by Hugo Wolf, and Ernest Bacon's "Sucking Cider Through a Straw" and "Lonesome Grave."

For an encore Mr. Diehl chose Gershwin's "Bess, O Bess, Where's My Bess" from "Porgy and Bess," and when called back to the stage again, he ended the program with "There's Nothing Like a Dame" from "South Pacific," the year-old Rogers and Hammerstein hit.

Mr. Diehl studied at the Juilliard School of Music, and has appeared in such Broadway hits as Jerome Kern's "Allegro," Jule Styne's "Gentlemen Prefer Blonds," and he will soon be seen in "South Pacific."

Mrs. Diehl, an apt accompanist and a polished pianist, also studied at Juilliard, and studied under Josef and Rosina Levine.

Reuther, Rau Will Speak At Academy

"What Prospects For Peace?" will be the theme of a series of four addresses to be given tonight at 8 o'clock at the Academy of Music. The Joint Forum Committee of Philadelphia is arranging this program in order to inform Philadelphians of the constructive methods which can be employed to bring an end to international conflicts.

"The Nehru Proposals" will be discussed by Sir Beenegal N. Rau, head of the Indian delegation to the United Nations. "The Reuther Plan" will be explained by Roy Reuther of the United Automobile Workers.

"A Business View" will be given by James P. Warburg, former banker and author of the current book "Faith, Purpose, and Power." "Some Quaker Proposals" will be discussed by Clarence E. Pickett, honorary secretary of the American Friends' Service Committee.

Students wishing to attend this lecture can obtain a ride to Philadelphia with Dr. Raymon Kistler. The admission tickets to the lecture will be one dollar for orchestra seats and 50 cents for the balcony.

A. S. Farenwald
— FLOWERS —

York Road at Greenwood Ave.
Jenkintown, Pa. Ogontz 2442

Home Furnishings - Hardware
Appliances - Sporting Goods
B. E. BLOCK & BROS.

309 YORK ROAD
Jenkintown, Pa.

RECORDS -- SHEET MUSIC
RADIOS -- VICTROLAS
INSTRUMENTS

"WHERE MUSIC LOVERS
MEET TO BUY AND BROWSE"

THE MUSIC CENTER
York Rd. & Greenwood
Ave.
Jenkintown, Penna.

Constitutional Changes, Bess Plans Adopted At S.G.A.

Constitutional changes in Honor Council, Athletic Association, and Nominating Council were adopted at the Student Government meeting Taylor Chapel on the evening of October 4. Betsy MacLeod '51, president of S.G.A., conducted the meeting.

Honor Council will be responsible only for academic regulations and Student Council will take over stealing and social restrictions. Nominating Council constitution changes set the date for freshmen election of officers in December instead of in March.

Current Events Lectures Slated

Current events lectures will be presented to interested students on Thursday evenings following chapel services. The speakers will be furnished by the administration and N. S. A.

The possibility of having an all-night study smoker in Beaver, Montgomery, and Grey Towers will be suggested to the administration.

Curtains will be put in Smoker

New curtains for the smoker and Chatterbox in Beaver Hall will be purchased by the S. G. A. A campaign for a cleaner, neater, and more attractive smoker is being started.

Tradition plans for the coming year were disclosed by Gayle Mac Cracken '52, co-chairman of Tradition. Dances, hayrides, a lawn party, bridge and canasta tournaments will be scheduled.

Leadership Training Installed

The leadership training program started last year will operate again this year. Officers of all clubs will be required to attend.

One campus chest fund will operate to raise money for charitable causes. Donations for Red Feather, W.S.S.F., Red Cross, Cancer and Heart funds will be handled in this fund.

Newly elected representatives to the Freshman Council were announced. The representatives are: Joanne Casselberry, Lois Chapman, Christine Kuhn, Irene Mack, Honey Marrow, Betty Ann Nagy, and Juanita Phillips.



Student Club
University of Miami
Coral Gables, Fla.

The Miami Hurricane
Law Building Plans Revealed

Meeting the gang to discuss a quiz—a date with the campus queen—just killing time between classes—the University of Miami Student Club is one of the favorite places for a rendezvous. At the Student Club, as in university campus haunts everywhere, a frosty bottle of Coca-Cola is always on hand for the pause that refreshes—Coke belongs.

Ask for it either way... both trade-marks mean the same thing.

BOTTLED UNDER AUTHORITY OF THE COCA-COLA COMPANY BY
PHILADELPHIA COCA-COLA BOTTLING COMPANY

© 1950, The Coca-Cola Company

Poetry Contest Is Open To All

The National Poetry Association announcing its seventh annual competition of College Students' Poetry. In 1949, approximately 21,000 manuscripts were submitted to this contest.

The only qualification to enter the poetry competition is that the student be a member of either junior or a senior college. The subject matter and form have no limitations, although it is suggested that, because of limited space, short forms of poetry are preferred by the Board of Judges.

Each poem must be typed, printed on a separate sheet, must contain the name of the student, as well as her home address, college address, and her college year.

There are no charges for submitted manuscripts, and the student may send as many poems as she wishes.

The closing date is Saturday, November 4, and manuscripts should be sent to National Poetry Association, 3210 Selby Avenue, Los Angeles 34, California.

Bess
Miss Besse H
Vol. XVII M
Tradit
Hayr
"Sh ne on
"Gosh, th
These wil
the date of
ing for all
couples
ask their fa
ates for this
The wagons
e furnished
Academy
Philadelph
everything—a
the club,
eshments.
Transport
The couples
Franklin
meet the w
urnish some
and from
st for girls
it up on th
rday.
The girls
angements
3, assistant
hairman fo
eissman '54
4, hayride cl
Rian Is
As Gue
n This
Dr. Edwin
Beaver Co
the guest
nearby churc
ecks.
He will p
andays, Oct
resbyterian
nant at Bal
y, October
Paul's Lut
de. This is c
nited in the
stitute.
Dr. Rian v
ellowship
church in M
ia, on Mo
Davis V
ere C
The Revere
eak to the
apel serv
at 6:45 i
Mr. Davis
church of
cated at
pads in Je
is a Direct
tion who
ork and is
lking with
g them to