

Dorothy Ingling Elected President Of Student Government Association

New President Will Assume Duties at Beginning of Move-Up Night Ceremonies

Dorothy Ingling has been elected 1946-1947 president of Student Government Association. In a close contest, Dorothy emerged as the choice of the student body as their representative in maintaining its best interests in all contacts within the college and with other colleges and associations.

Dorothy's election to the highest student office in Beaver College is the culmination of a career designed to give her the qualifications necessary in carrying out her important duties. Beginning her career of responsibility at Highland Park High School, Highland Park, New Jersey, she was elected secretary and, later, treasurer of her class. At this time began her interest in newspaper work. In addition she captained her school bowling team.

Was Class President

Upon her arrival in Beaver a little over three years ago, Dorothy entered into class activities that culminated in her being elected president of the large freshman class. In addition to this office she also found time to serve as treasurer of the Beaver chapter of the Red Cross. At a time when most freshmen were struggling to keep themselves from being overcome by home work, exams, and term papers, Dorothy became a reporter for the *Beaver News*. Quickly rising to the top through appointment as news editor in her sophomore year, she was made managing editor of that publication in her junior year.

Having pulled her class through its first crucial year as lowly freshmen, Dorothy was re-elected as president of the class of '47. Under her guidance the sophomores successfully evaded the traditional slump. During this year, in recognition of her work on the *News* she was elected to Pi Delta Epsilon, national honorary journalism society.

For the past two years Dorothy has been a valuable member of the rifle team and since her freshman year her voice has been heard from the alto section of the Glee Club.

S.G.A. Treasurer

In order to assume duties as an officer of Student Government Association, Dorothy had to relinquish her class office. In this, her junior year, she was elected as treasurer of Student Government Association, providing herself with ample experience in school government.

The new president will officially assume her duties during the annual Move-up night ceremonies. At that time Nancy McIntosh will hand the gavel to Dorothy Ingling who will preside as all new officers are installed.

During the evening, gold Beaver keys will be presented to retiring officers of the Student Government Association as a token that they have served a year in their respective offices.

Forum Sponsors Art Lecture

Mr. Benton Spruance, professor of fine arts, presented an illustrated lecture with colored slides last Wednesday night in Taylor Chapel.

Mr. Spruance discussed the development of modern art in the twentieth century, stressing Picasso, his various periods and influences and his influence on contemporary painters in America and abroad. Mr. Spruance stated that he thought Picasso was one of the greatest minds of the twentieth century.

This event was sponsored by the art division of Forum.

S. G. A. President



Dorothy Ingling '47

Red Cross Drive Held This Month

The month of March has been set aside for the Red Cross drive at Beaver. Suzanne Sharnik '46 is chairman of the drive.

A minimum of \$450 has been set and it is hoped that Beaver will pass this mark.

The drive was ushered in with a chapel service, led by Suzanne Sharnik, and a movie on the benefits of the Red Cross was shown after chapel.

There are solicitors in each dormitory who ask everyone to buy a share which is \$5.00 or a part of a share in this worthy cause.

There is an ever present need for Red Cross and all that it does and it is hoped that students will take an active part in this need. It is not contributing, it is buying a share.

New Regulation In English Made

The English department wishes to call the attention of the students to a new regulation appearing in the 1946 catalogue which applies to all students except the present senior class. It was adopted by the entire faculty in the belief that no student should be graduated from Beaver who could not write correct English.

Since it has been found that many students who have passed English 101-102 fail to maintain a satisfactory standard in their written work for the other courses, a proficiency test is to be given to determine the cause for this failure. If the test shows that further formal training may be helpful in making correctness a permanent habit, those students will be required to register for a first-aid course in English fundamentals, called English 105.

Even those in whom the test does not show weaknesses may be required to take the courses if any member of the faculty discovers marked deficiencies in their written English. It may also be elected by any student who thinks it would be useful to her.

The first proficiency test will be given at the final examination period this May. Juniors and sophomores, except those who received a grade of A or B in English 101-102, are expected to take it. All students whose credits in English composition are transferred from other institutions must take the test no matter what grade they received.

Glee Club Concert To Be Presented With Soph Hop

Mr. W. Lawrence Curry Will Direct Glee Club; "Esquires" Play at Dance

The combined Glee Club concert and Soph Hop will be held on Saturday evening, April 6. The concert will take place in Taylor Chapel at 8 o'clock, followed by the dance in Beaver Hall dining room from 9:15 until 12.

At the concert, Mr. W. Lawrence Curry will direct the Beaver College Glee Club with Emma Leeds '47 and Barbara Breece '49 as accompanists.

Miss Elizabeth Snyder will be featured as a soloist and will play the first movement from Tschai-kowsky's "Concerto" in B flat minor. Mr. Curry will do the orchestral accompaniment on the organ. In addition to Miss Snyder's solos, Miss Thelma Davis, instructor in music, will present a group of vocal selections.

Following is the student program for the concert: "Hymn of Freedom," Thiman; "O Lord Most Holy," Franck; "Jesu, Joy of Man's Desiring," Bach; "Onnipotence," Schubert; "Clouds," Ernest Charles; "Summertime," Gershwin; "Begin the Beguine," Cole Porter; "Holiday for Strings," Dave Rose; "When Johnny Comes Marching Home Again," Mead.

The Soph Hop, with music by the Esquires, will have an 18th century ballroom theme. Refreshments will be served in Green Parlors during the dance.

General co-chairmen of the evening are Evelynne Coleman '46, president of the Glee Club, and Marcia Passon '48, chairman of Soph Hop.

Tickets for the evening will be \$1.98.

The decorations for the concert and dance are under the direction of Florence Mullen '47, and Sally Myrick '48. The orchestra was arranged by Nancy Crosson '48. Publicity co-chairmen are Muriel Ruemmler '48 and Betty Jane Anderson.

SOPH HOP

(Continued on Page 4, Col. 3)

Spanish Fiesta Promises To Be A Highlight In Musical Entertainment

By Louise Choo

It's Spanish Fiesta time again, and judging from the snappy song and dance rehearsals that are being held, this year's program, presented by the Spanish students, will be a repeat performance of last year's brilliant colors, gay tunes, and enjoyable musical entertainment. The Fiesta will be held either at the end of April or early in May.

Supervised by Miss Mary C. Rivero, instructor in Spanish, the dance rehearsals went into action last Monday evening. Those who were at the Christmas program held in Beaver lobby just before vacation will remember the *Jota*, a lively dance which was performed by three members of the Spanish classes. Because it was so well received, this same dance, which is the national Spanish dance, will be presented again. From the early preview, the Fiesta looks decidedly like first-class entertainment.

This year the Fiesta will not include dances from South America but will concentrate on Spanish dances, with the possibility of the addition of one Mexican dance. This dance will be the popular Mexican hat dance which will be performed by girls chosen after try outs. For those who have often wondered

Freshmen Elect New Class Officers; Carol Kunz Is Chosen As President

Freshman Officers



Carol Kunz, Anne Heaps, Marian Wolfinger, Ada Mae Cobern.

Anne Heaps is Elected Vice-President; Marian Wolfinger is Secretary

Carol Kunz '49 has been elected president of the freshman class.

Final election returns on freshman candidates for various councils were announced at chapel on Thursday, March 7. Class officers had been announced previously.

The other officers are as follows: Anne Heaps, vice-president, Marian Wolfinger, secretary, and Ada Mae Cobern, treasurer.

The freshmen elected Polly Cadwallader to represent them on Student Government, and Doris Pratt for Honor Council. Two students, Gail Boswell and Carolyn Schade, were elected to the Nominating Council; Sylvia Campbell was voted to be the Y.W.C.A. representative. Patricia Gardy represents the freshmen day students on the Day Students' Council.

Carol Kunz is from Mt. Lebanon, Pennsylvania where she was graduated from the Mt. Lebanon Senior High School. She was president of the 10th grade and secretary of the 11th grade, president of the Girl Reserves, art editor of the school paper as well as being on the honor roll. Carol is in the Fine Arts department.

Anne Heaps is from Whiteford, Maryland. She is a graduate of Slate Ridge High School, Cardiff, Maryland. Anne was the secretary and treasurer of the church guild, vice president and president of the Athletic Association, secretary of the Home Economics Club and president of the Glee Club. Anne is a liberal arts major in the Early Childhood Education department.

Majors Are Varied

Marian Wolfinger is from Chalfont, Pennsylvania. Marian is a graduate of Doylestown High School in Doylestown, Pennsylvania, where she was on the hockey and basketball teams and the news staff, and was also a member of the mixed chorus. Here at Beaver Marian is a music major.

Ada Mae Cobern, who is from Haddonfield, New Jersey, and a music major, is a graduate of Memorial High School. Ada Mae was a member of the high school Glee Club, a drum majorette and editor of the senior year book.

Polly Cadwallader is from Pennington, New Jersey. While at Pennington High School Polly was president of the Girls Athletic league, feature editor of the high school newspaper and a member of the National Honor Society.

FRESHMAN OFFICERS

(Continued on Page 4, Col. 1)

Beaver Mothers Hear Glee Club

The Mothers' Association of Beaver College under the direction of Mrs. George Maroney, president, held its monthly meeting at 8 p.m. Tuesday, March 5, in Green Parlors. Invitations were sent to all members of the association.

After the meeting, the Glee Club under the direction of Mr. W. Lawrence Curry, professor of music, presented a most interesting program, which was received very enthusiastically.

Selections sung by the Glee Club included "Summer Time," Gershwin; "Holiday for Strings," Rose; and "Clouds," Ernest Charles.

The annual spring luncheon of the Mothers Association will be held on Saturday, April 13, at 1 p.m. Guests will meet in Green Parlors.

Reservations must be made by April 5, and should be made with Mrs. Nicholas Hunter-Ogontz 2367.

Dr. Raymon Kistler, president of Beaver College, will be the guest speaker.

BEAVER NEWS

Published weekly by members of the student body of
Beaver College, Jenkintown, Pennsylvania.
Subscription rate \$2.50; Mailed subscription, \$3.00

Editor-in-Chief Mimi Paul
Editorial Staff

Managing Editor Dorothy Ingling
Feature Editor Ruth Swartley Gellert
Assistant Feature Editor Louise Choo
News Editor Beverly Brown
Copy Editor Patricia Curran
Make-up Editor Helen Curran
Sports Editor Elizabeth Gold
Assistant Sports Editor Nancy Crosson
Art Editor Ruth Hohmann

Columnists

Alumnae Susan Iffland
Exchange Margaret Carnahan
Faculty Judith Pike
Feature Beth Wiggins
Music Marcia Passon
Sports Dorothy Moffett

Reporters Sylvia Campbell, Jean Coffman,
Constance Disy, Myra Eichlin, Virginia Hopkins

Business Manager Betty Jane Rothenberger

Advertising Manager Margaret Ingling
Circulation Staff Shirley Bullock, Patty Burg,
Nancy Crosson, Anne Stelos

Typing Managers .. Isabel Lockwood, Phyllis McGrew

Photographer Marilyn Yest

Faculty Adviser Miss Belle Matheson

1945 MEMBER 1946
Associated Collegiate Press

Represented for National Advertising by National
Advertising Service, Inc.

Crisis Meeting

Last Sunday night we had the privilege of attending a crisis meeting, the first public meeting of the Philadelphia branch of the Independent Citizens Committee of Arts, Sciences, and Professions.

Among the speakers at this crisis meeting was James Roosevelt, Director of Political Action of the I. C. C., and it was he who made the clearest statement of the need for and purpose of this Independent Citizens Committee. Since we feel that the need for this kind of organized stand in American politics is most urgent at this time, we wish to place ourselves squarely in back of the aims of this committee.

* * * *

Mr. Roosevelt, in a speech that was most gratifying in its directness, clearly stated that it is impossible at this time for any liberal individual to be satisfied with either the democratic or republican party as a whole. There are too many senators and representatives who have forgotten their campaign promises, too many matters that need independent rather than party pressure. The Independent Citizens Committee has given independent citizens a voice, has given them not an ideology which they already have, but simply an organization through which they can become a forceful element, an active rather than a passive group.

Mr. Roosevelt stated that he thought that it was time for a realignment of political parties, but until this is accomplished it is up to the independent citizen to make himself heard.

* * * *

When Harold Ickes, the newly appointed executive chairman of the I. C. C., was interviewed in Washington, he said, "Today we stand in grave danger of losing the peace. We are in a crisis that can lead to a third world war. The people of this country must demand that our government reaffirm its intention to support the United Nations and to disavow those disrupters who are undermining the unity that brought us victory."

This as far as we're concerned is as clear a statement of purpose as we need.

Sidelines

By Helen Curran

We found it difficult last weekend to concentrate on anything very serious, even the news in Europe which gave people a sense of uncertain dread and made them look toward Russia with hope and fear. We were caught up in the sudden freshness of spring in winter, and wanted to just sit back and enjoy nature. Well, we went for a long walk and forgot for an hour that the world was stumbling up a few steps of Marxian philosophy getting to the house of peace. It was a wonderful walk. There is nothing quite like drenching oneself in the feel and the smell of spring even when one can't see it. When this season sends her previews of the coming attractions, we almost come to believe that the promise and warning of spring is greater than spring itself. But so it is with all things.

* * * *

We are getting a little worried about what foreigners are going to think of our country if they keep judging it by the movies. In *Esquire* we learned recently that 50 Australian brides of American soldiers have made a mad dash back to their homeland because they found the United States so distasteful and "not at all like the movies". Someone had better warn them that what they are considering a true picture of life is only an escape and often unadulterated foolishness on our part. However, if we prevent them from seeing our movies, they will probably get around to reading our comic strips or listening to our radio programs and will end up being in the same boat. It would be interesting to see a movie or hear a radio program which actually depicted life as it is in the United States and not as people would like to think it is.

* * * *

We have two friends, which is not in itself terribly unusual, but these two friends presented an interesting paradox to us the other day. One has just graduated from a prominent college with a bachelor of arts degree; the other recently emerged from a public high school carrying a diploma in commercial subjects. Both girls attempted to get positions, as they were finding it necessary to support themselves in one way or another. Our college friend is now beginning her fourth week of job-hunting; it seems she has to confess a sad neglect in the art of typewriting. Our other friend is beginning her fourth week in a secretarial position of a prominent firm which starts its secretaries, generously enough, at \$35. a week.

(Which hour is it that typing is given?)

* * * *

With the understanding that we have the unique privilege of saying anything in this column that happens to come into our head, we now venture into the dictatorial stage...

We find it impossible for Americans to ignore any longer the starvation that exists in Europe. While we live more than sufficiently on 3400 calories a day, half the population of Europe lives on less than 2000 calories and many on 1500 a day, as long as they can. The baby mortality has risen 100 per cent and as a result of a prolonged and severe drought and the devastation of war, food production has been reduced 25 per cent. Americans are able to keep thousands alive who would otherwise die, and we can do so not by eating less, but by wasting less. In the daily papers this week there are 17 suggestions, too numerous to list here, as to how individuals may help prevent this starvation in Europe. It is imperative that we should all follow out these suggestions carefully. The best weapon against starvation is generosity and in this season of sacrifice we cannot disregard the use of this weapon. The spirit of Lent could have no better practical application than this.

To All Students:

With due respect for the Editor's opinions as were outlined in her so-called "Factual Editorial" in the last issue of the *Beaver News*, I wish to add a fact to the contents of her article. Mention of one most important detail was omitted. The impression gained by many readers was that the sponsor and promoter of the Bermuda trip offered to Beaver students and their friends an opportunity which was NOT for all of them. At the initial opening of this offer the conductor of this trip was wholly unaware of the policy of the hotel, "that of restricted clientele." The very day she learned of this she contacted the Bermuda Development Board in Bermuda, who, fortunately, was able to arrange accommodations at another Inn where the policy is not prejudiced. This comment is merely to make Beaver students aware that the conductor of the party was entirely ignorant of the policy of the original hotel and that her plans in making change of hostelry were under investigation quite some time before the Editor questioned her for detail before writing the Editorial. In no way did the article influence the change of hotel, since, as stated before, the problem had been taken to proper Bermuda authorities as soon as the writer was advised of the restriction.

The trip is open to any Beaver student or her friends just as the sponsor intended it to be.

Ruth M. H. Zurbuchen

Here and There

To prove a point, nutritionist Mary Barrick, home economics graduate at Iowa State College, fed a white rat on her version of a typical college woman's diet. The diet was begun in November, and the rat, together with his well-fed brother of the same age, was to be used in hygiene class demonstration on the dietary deficiencies. The rat wasn't used in the demonstration, but the point was proved. He died of malnutrition the day before the scheduled lecture.

From the *Wilson Billboard* comes an item on an Outing Club that has recently been organized. Any member of the faculty or student body will be eligible for membership after fulfilling the following requirements:

1. Go on one weekend trip or an overnight hike, if the weather permits.
2. Do an afternoon of wood-cutting under special instruction.
3. Have a practical knowledge of First Aid.
4. Build an outdoor fire.
5. Cook one meal out-of-doors.

EXCHANGE

(Continued on Page 4, Col. 4)

Faculty

Mr. Lorus Milne, visiting professor of physics, spoke on the subject, "Color Vision and Camouflage" at the regular meeting of the Faculty Club held last evening in Green Parlors. Miss Isabelle Bull, president of the Faculty Club, presided, and the social committee headed by Mrs. Jane Becker served refreshments after Mr. Milne's talk.

Miss Helen E. Vansant, associate professor of mathematics, attended a meeting of the American Mathematical society on February 23 at Columbia University.

Mr. and Mrs. Samuel Bassett have recently bought a house at 145 Bickley Street in Glenside, Pennsylvania. They plan to move there during the summer.

Mrs. Bassett, assistant professor of chemistry, has been writing stories for children. Recently she has sold two short stories and an article for the activity page of "Jack and Jill" magazine.

On Wednesday nights, the girls at Grey Towers have been eating dinner which the Quantity Cookery class, taught by Miss Mary J. Hitchcock, instructor in home economics, has helped to prepare.

"Hymn to Art," composed by Mr. W. Lawrence Curry, professor of music, in 1937 for the Cultural Olympics Inaugural Festival will be sung and played by a large chorus and symphony orchestra respectively at the final festival to be held sometime in May. Mr. Curry has done additional work and a re-orchestration on this piece of music and it is to be published by the Theodore Presser company.

Dr. Morgan H. Thomas, president of the board of trustees, was the guest speaker at a meeting of the New York City Alumnae Club recently.

Alumnae who have recently made contributions to the Liberation Fund include: Mildred Albere '38, Ruth Carr '34, Wilma Haack Fowler '35, Mildred Graybill '44, Eugenia Karras Latches '40, Doris McLean '41, Lt. Anita Reinecke '42, Rebecca H. Shriver '33, and Katharine Nichols Smith '35.

Mrs. Gladys Cutright, Miss Mary Rivero, and the students in the Spanish department have been collecting clothing, shoes, and food for orphaned children in France.

Mrs. Patricia Baier, instructor in Physical education, will take the Beaver College Dance Club to the Westchester High School, Thursday, April 11. They will participate in a program sponsored by the Southeastern District of the Pennsylvania State Physical Education Association.



Peter's Patter



By Dorothy Moffett

This is Peter pattering along, but not quite as usual, for my heart almost gave out Saturday morning. Some of the basketball team went to the Prom and it sure did show in the game. It took everyone the first half to wake up and by that time Albright was ahead. Again the gals came through when pressure was on and remained nice and calm. The final score was 32-30 in our favor. That is the tightest squeeze so far. Of course we have Temple this week and it will really be something. I want to see lots of you out there cheering the gals on. The season has been quite good so far.

The game had the usual moments of excitement. Pat did a few loops and hit the floor quite hard when she got mixed up with their 'little' girl six feet one inch. Pep got control of things, however, and Albright had a difficult time scoring in the last quarter. Scotty started to slip some shots in and DeCoursey also. It all ended in a wild scramble and Beaver had won another one.

Touring the country was the best part of Saturday's journey. After a beautiful ride to Reading and playing a wild and woolly game everyone decided to go sight seeing on the way back. We climbed a very windy road and then at the top everyone got out and walked up to the top of an old Chinese pagoda and viewed the surrounding country. The wind practically blew us away. Leaving this point all of us went on to Pottstown to have lunch. One of the group of cars strayed and two remained in town. Besides all this I was greatly embarrassed when Duffer's car had a parking violation sticker on it. She and Pep went into the police station and talked them out of a dollar fine. Such fun. Everyone got home in good shape.

Last Wednesday the senior basketball team won the intramural tournament by beating the freshman 30-21. Sure was an exciting game. That means the seniors have won three cups this year, the hockey, basketball and volleyball. Nice going, kids.

Hockey Picture Shown on Monday

On Monday night, March 11, the Athletic Association of Beaver College entertained many of the celebrities of the hockey world with the first showing of a motion picture on hockey tactics and techniques in Taylor Chapel. The picture was followed by refreshments in the A. A. room.

The picture was sponsored by the United States Field Hockey Association, under the supervision of a Jenkintown girl, Miss Sue Cross, the president of the U. S. F. H. A. Members of the hockey team of Beaver for the 1946 season and a few players from other colleges were the demonstrators of the offensive and defensive plays described and presented in motion on the screen.

The most noteworthy guest of the evening was Miss Constance M. K. Applebee, who brought the game of hockey to the United States from England in the year 1903. At the age of 81, Miss Applebee is more enthusiastic and livelier on the hockey field than any college or professional player that could be found today. Miss Agneta Powell, the head physical education teacher at Agnes Irwin and an All-American hockey player, Miss Sue Cross, president of the U. S. F. H. A.

Basketball Team Victorious Again

Displaying what has become a customary fourth quarter spurt the Beaver College girls' basketball team managed to defeat the Albright girls' basketball team by the slim margin of 32-30 on the latter's court in Reading, Pa. last Saturday. This win marked the ninth victory for the red and gray sextet this season.

Virginia Woerle, six feet one captain and center forward for Albright, opened the scoring with a left hand lay up shot. The ball was given to Beaver at the center but the red and gray forwards lost it due to the alert guarding of Albright. Again the ball was sent to Miss Woerle and she duplicated her initial shot. Because of her great height it was almost impossible to prevent Miss Woerle from shooting for the basket once she had gained possession of the ball.

Jane Scott, captain of the Beaver team, opened the scoring for the latter with a two handed overhead shot. This seemed to put that much needed spark in the Beaver team and they went on scoring for the rest of the first period to go ahead of Albright by the slim count of 11-10.

The Beaver team bogged down in the second quarter and only scored four points. The Albright forwards took advantage of the slump and scored eight points which succeeded in putting them out in front at half-time by the score of 18-15.

In the third quarter Beaver forwards and guards showed much more determination than they had previously. Betty DeCoursey, sophomore, left forward for Beaver, played particularly well during this period. Betty's right handed push up shots helped to bring Beaver out of the slump and put them back into the game. At the end of this period Beaver was trailing Albright by one point. The score was 25-24.

The fourth period was a tense one for both teams. The play became rough and fast. Several fouls were called on both teams. The scoring was fast, each team having an equal share of it. Finally, with what looked like a supreme effort the Beaver team went ahead on a field goal by Jane Scott. Albright gained possession of the ball and was starting toward the Beaver basket but the clock ran out and Beaver again cheated their opponents out of what looked like victory at many different times during the game. The final score was 32-30 in favor of Beaver.

A newcomer to the Beaver lineup this time was Blanche Woodworth, freshman right guard. Blanche played for a short time in the second quarter and displayed good form in her guarding technique.

High scorer for Albright was Virginia Woerle, who had 18 points. Again Jane Scott was high scorer for Beaver with 14 points.

| LINE-UP | | |
|-----------|----|------------|
| Beaver | | Albright |
| Moffett | RF | Sperans |
| Scott | CF | Flickinger |
| DeCoursey | LF | Woerle |
| Carnahan | RG | Sanger |
| Pepper | CG | Stahler |
| Macdonald | LG | Allen |

Beaver Alumna Becomes Doctor

Virginia Van Dyke '42, who was a pre-medical student at Beaver, was graduated from the Hammond Medical School of Philadelphia last Tuesday evening as Virginia Van Dyke, M.D. She will now serve as an interne for one year.

While a student at Beaver, Virginia majored in chemistry and minored in biology; she was a prominent participant in many school activities. She was vice-president of the Student Government Association and was also elected to Who's Who.

Senior Class Wins Intramural Cup

For the third time in four years the class of '46 won the intramural basketball cup. The state-seniors first annexed the cup back in 1943 as freshmen and won it again last year for the second time.

The class of '46 met the juniors first and experienced little trouble with them, winning by a score of 25-6. The sophomores were the next victims to fall before the seniors' attack losing to the class of '46 by a score of 23-14.

The game between the seniors and freshmen that won the cup for the seniors, however, was the most exciting and most closely fought contest of them all. The freshmen were also undefeated and presented quite an array of talent. The game was nip and tuck for almost three quarters. It wasn't until the last quarter that the seniors began to pull away. The score at half-time was 14-13 in favor of the class of '46 and the final score was 31-20 in favor of the seniors.

The seniors' winning combination consisted of Dot Germain, Jane Brown, Nancy McIntosh, and Pat Maimin forwards with Ruth Gellert, Jean Bump, and Elizabeth Gold as guards.

Betty Green '48 was in charge of the intramural program this year and Miss Smith was the faculty adviser.

Nancy McIntosh was captain of the senior team, Le Brust '47 was captain of the juniors, Shirley Kern '48 captained the sophomore sextet Pat Steenson '49 was captain of the freshman team. The final standings of the four classes are as follows:

| | Won | Lost |
|------------|-----|------|
| Seniors | 3 | 0 |
| Freshmen | 2 | 1 |
| Sophomores | 1 | 2 |
| Juniors | 0 | 3 |

Interview With Beaver's Registrar Reveals Many Interesting Opinions

By Patricia Curran

After some difficulty we finally secured an interview with Beaver's busy registrar, Miss Marjorie Darling. No doubt we pushed a prospective student and her family off Miss Darling's all too full calendar, but after the pleasant half hour we spent with her the other afternoon at her office in Beaver hall we believe it was worth the struggle.

Before Miss Darling sat down at her desk she rose to shut the window, saying that she was afraid she was catching too much of the spring fever that so filled the air on the March day on which we interviewed her. In a few minutes, however, Miss Darling was giving us some of the interesting opinions that we had expected of the vivacious and attractively dressed registrar with whom we had previously had only short business contacts.

"Already I am completely in love with Beaver," Miss Darling said. "After all, you couldn't sell something you didn't completely believe in. I find Beaver students very friendly and extremely cooperative. They have turned what might easily have been a 'sticky first year' into something quite the contrary.

"Yes," she said, "the girls have helped a lot. It is the friendly ease and atmosphere of Beaver which one appreciates most."

Educated at the University of Pennsylvania Miss Darling thought her formal education provided her with the background and techniques of dealing with people. As for choosing the kind of work which she is doing, Miss Darling maintains that she "fell into it" and was sidetracked from the field of journalism.

Her coming to Beaver and her work as registrar, Miss Darling said, were made considerably easier by the aid and tremendous help



By the Peeper

The much talked of, planned for Junior Prom weekend has finally passed, leaving no doubt in the minds of those lucky ones who attended that the entire affair surpassed all expectations and that the Junior class can well be proud of its efforts and of its chairman, Shirley Blodgett.

Though it drizzled and that premature spring weather turned back to winter cold, everyone from alumnae to freshmen jammed into Grey Towers, which resembled fairy land with potted ferns, spring flowers, and sparkling lights, not to mention the colorful array of formal and corsages. And so many exciting things happened—Vincent Lopez announced the engagement of Lynn Yost to Jack Burhoe, Isy sang two numbers with the orchestra, and Nancy Stein's date sang "Symphony." Then promptly at midnight the members of the receiving line and chaperons selected the king and queen of the Junior Prom—Lee Brust and her date who in turn led the Junior Promenade.

Though it's an impossible task to try to name everyone who was there, we'll try to name a few—Grace Hartmann was seen dancing with Jimmy, Peggy Carnahan with long-awaited Ted, Romy Bahn and Bud, Avie Crosier and Dick, Choo-Choo and Pag, Fretz and Ken, Vi

Long and Butch, Karin Hansen and Bruce, Swannie and Charles, Helene Samuels and Mal, Muriel Brown and Larry, and oh so many others. Gloria Bernstein, Peggy Bliss, Jane Reed, Pat Maimin, Berk, Mac, Jean Scott, Ruth Yearsley, Nancy Demme, Peggy Crossfield, Pat Duke, Beverly Brown, Chickie Halprin, Eleanor Woodruff, Ginny Dellinger, and Judy Pike (must stop somewhere!) were also on hand with their dates, tripping the light fantastic.

Lucious formals were everywhere and the fellows did look so nice in their tuxes. Refreshments were plenteous and delicious—if you doubt it, just ask B. J. Redfern, Peg Fowler or Effie and Herbie who were seen crowded around the punch bowl.

And we didn't miss those taking everything in from up above or those checking coats and flower boxes either—Corkie, Susie, and Kitty were a few we noticed hanging over the bannisters, while Jo Ann Wilder, Beth Harper, and Butch did a rushing business checking wraps in and out.

The doggie roast was something, too — what with a huge bonfire blazing, a cold wind, starving couples, and hot dogs, rolls, mustard, and relish, you should have seen the fun and heard the noise. Sadie Turner, Evie Coleman, Emmie Heizer, Joey Thurston, Reggie Smith, and Ruthie Friert did all right with their end of the roasting, though some of the others had an awful time keeping the dogs from falling off.

The weekend ended with the informal dance on Saturday evening in the Mirror Room instead of the gym, and with the departure of the last couple, one of the biggest events of the year had ended. But as there is always something nice to come, we can hang our bids up on the wall, press our now-wilted corsages, and await the fast-approaching Soph Hop early in April. In the meantime, have a happy spring vacation and we'll be peeping in on you all again real soon!

Metronome

By Marcia Passon

Note a reminder of the Golden Slipper Square Club all-star concert—Wednesday evening, March 27, at 8:30 in Convention Hall, Philadelphia.

No notes are necessary to expound the great success of prom weekend. Isy Lockwood '48 sang with Lopez. Quite an opportunity all the way around. Babe Cobern '49, Shanny Stelos '48 and Marcia Passon '48 provided a bit of entertainment on Saturday evening. All proving that the prom is over. We now look forward to the Soph Hop which promises to suit real Beaver post-war standards.

Vladimir Horowitz, acclaimed the world's greatest pianist, will appear on Thursday evening, April 4, in his only public appearance this season at the Academy of Music in Philadelphia.

Mary Reiley '47, Peg Leeds '47 and Peg Fassett '47 will entertain students and mothers at a tea in Green Parlors, Thursday, April 4. It is informal and is in honor of the Mothers' Association.

The Glee Club will sing at Old York Road Country Club on Sunday, the 17th.

Play Contest Rehearsals Begin

All the classes have been busily catching up on their dramatics this month with Inter-class Play Contest looming ahead of them. The date has been set for April 10 at 8:30 P. M. in Murphy Gym and rehearsals are already in full swing.

The accent this year is on presenting a really good play, and this aim has certainly been fulfilled. Witness the seniors and their choice of *Ile* by Eugene O'Neill. Suzanne Sharnik is the senior chairman and Marilyn Meister is the director. The cast for *Ile* is as follows: the captain, played by Ricelle Persky, the steward, played by Eloise Crothers, the wife, played by Suzanne Sharnik, and the maid, played by Nancy Gubb.

The juniors have also chosen a famous play to display their talents, John Millington Synge's *Riders to the Sea*. Pat Duke is the director of the juniors and Effie Potter is chairman. The cast is as follows: Cathleen played by June DeFranck, Nora played by Corinne Gross, Bartley played by Doris Goodwin, and Maurya played by Joan O'Dwyer. Virginia Hopkins is in charge of make-up for the juniors and Ann Thayer is the stage manager.

The serious tone of the two preceding plays is present in the sophomores' choice, too. They are at work on North Baker's play *Lost Victory*. Priscilla Mock is chairman and Joan Edwards is the director. The cast includes Virginia Dellinger as Cynthia, Betty Jane Anderson as Cordelia, Loretta Berkowitz as Annie the maid, Helen Curran as Agatha, and Maxine Paul as Paula.

The freshman chairman is Beverly Peterson and the director is Carol Kunz. The play they have chosen is a comedy, *Ladies, I Address You Privately* by David Wolf Windsor. The cast consists of Mary Lou Johnston as Mrs. Sloan, Mary Napier as Hester, Peg Bristol as Sarah Scriptures, Peg Bristol as Sarah Williamson, Elenore Maron as Natalie Townsend, Joyce-Eileen Somers as Chatty Townsend, Nancy North as Jane Forsyth, and Dorothy Bernstein as Cynthia Charlesbois.

Inter-class play contest is sponsored by Forum. The entire event is student produced and directed without any faculty assistance. Joan O'Dwyer, drama representative on Forum, is in charge of this activity and Muriel Harbers is general director of make-up.

The classes are taking turns rehearsing in Murphy Gym, each one being allowed one rehearsal a week there.

FRESHMAN OFFICERS

(Continued from Page 1, Col. 5)

Polly is in the department of Fine Arts.

Also a Fine Arts major is Doris Pratt who comes from Pleasantville, New York. While a student of Pleasantville High School Doris was the girl's sports editor on the school paper, editor of the yearbook, vice president of the Leader's club and a member of the basketball and hockey teams.

WALTER G. VALENTINE FLORIST

WEST AVENUE
Next to Post Office
Corsages a Specialty

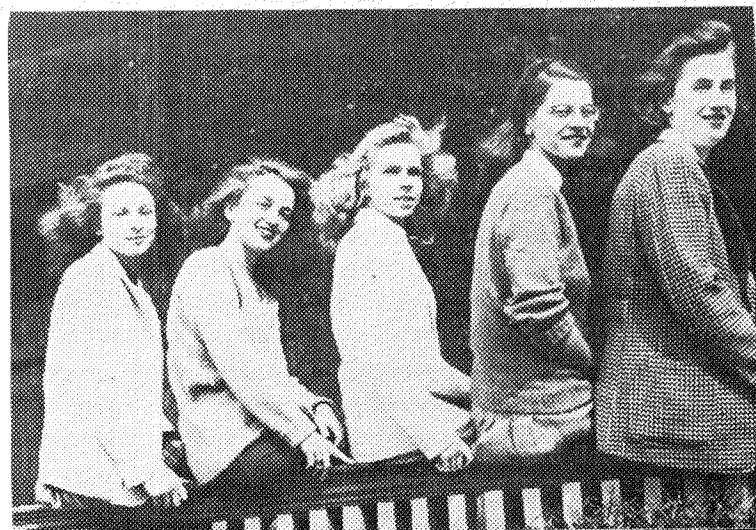
A. S. FARENWALD FLOWERS

York Road at Greenwood Ave.
Jenkintown, Pa. Ogontz 2442

Gifts - Sporting Goods - Hardware

W. C. FLECK & BROS.
INC.
309 YORK ROAD

Play Contest Directors



Suzanne Sharnik '46, Marilyn Meister '46, Joan O'Dwyer '47, Joan Edwards '48, Carolyn Kunz '49.

May Day Chairmen Full Of Ideas; Pageant To Have A Swedish Theme

According to Marion Plummer and Suzanne Sharnik, co-chairmen of May Day, this year's May Day will be terrific, owing to the many new ideas which have been introduced. On May 4 the students of Beaver College and their friends will see the fine work of the co-chairmen and their committees which will make a truly gala May Day to be held at Grey Towers in the vicinity of Brookside.

Since the program is tentative and since the color scheme has not been decided upon, there is no way of actually describing the wonders in store for the spectators, when this biggest Forum event is presented.

The highlight of the fete will occur when the Queen is crowned by the 1945 Queen, Mary Lou Welchons. Neither the four girls elected to attend the Queen nor the girls comprising Honor Court

and Laurel Chain have been announced.

The theme of the entire affair is to be Swedish. Numerous bleachers will be set up on the hill. Moreover, a stage will be painted in a floral design, upon which the crowning will take place.

Three groups of Swedish dances are to be presented—one of which is to be a May Pole dance. As yet no girls have been selected to do the dances.

The girls assisting Marion and Suzanne are Martha Davis '47, refreshments; Alyce Sato '47, costumes; Marcia Passon '48, music; Gloria Mazzeo '46, theme; Mary Ann Ludlum '48, properties; Jean Bump '46, programs; Rheta Cohen '46, dance.

The faculty advisers are Mr. Benton Spruance, Mr. W. Lawrence Curry, Mrs. Elsie McGarvey, Miss Jean Francksen, Mrs. Patricia Bailer, and Miss Marion Hennessy.

Social Committee Holds Spring Tea

The coming of spring will be observed by the social committee of the Student Government Association with an informal tea to be held in Green Parlors on Thursday, April 4, from 3 to 4:30 in the afternoon. Guests of honor will be the members of the Beaver College Mothers' Association and the mothers of day and resident students.

The entertainment will include voice solos by Mary Reiley '47, accompanied by Emma Leeds '47, and piano music by Margaret Fassett '47.

The tea will not be open to students unless accompanied by their mothers. Invitations will be sent to the mothers of all day students. Resident students whose mothers may be able to come are asked to notify Marie Fisher '46 so that written invitations may be sent to the mothers.

Hostesses will include Mrs. Charles W. Zurbuchen, adviser to the social committee; Marie Fisher '46, chairman; Beatrice Carten '48; Martha Davis '47; Ruth Groves '46; Susan Iffland '46; Marilyn Marshall '48; Jacqueline Miller '49; Betty Jean Redfern '46; Jacqueline Shaner '46; Aloise Versen '46; and Joy Woronock '46.

BLAETZ BROTHERS

Incorporated
Printers and Publishers

Printers of
BEAVER NEWS

JARRETT & ROCKLEDGE
AVES.

Fox Chase, Phila.

Evelynne Coleman To Give Concert

Evelynne Coleman, pianist, will be presented by the music department of Beaver College as the senior recitalist and pupil of Miss Elizabeth Snyder, alumna of and teacher at Beaver, on Monday evening, March 18, at 8:30 o'clock in the Mirror Room at Grey Towers.

Evelynne has been a student for three years at Beaver and has been a member of the Choir and Glee Club for that time. She has been president of the Choir for the past two years, and is now also president of the Glee Club. She has performed in practice recitals given by students and also in the formal artist recital given annually. Among these musical activities, it is well to note that Evelynne was on the music committee of May Day in 1945.

Miss Snyder will play the piano arrangement of the orchestra part of Beethoven's "Concerto No. 1 in C Major" (allegro, con beio). Further selections will be: "Ich ruf zu dir, Herr" (Bach-Busoni), "Etude Op. 25, No. 1" (Chopin), "Etude Op. 10, No. 12" (Chopin), "Intermezzo Op. 76, No. 4" (Brahms), Polka from the ballet "L'Age d'Or" (Shostakovich), "La Cathedrale Engloutie" (Debussy), and "Minstrels" (Debussy).

After the recital a reception will be given in the Rose Room at Grey Towers, where refreshments will be served. This is the first recital to be given in the Mirror Room for many years.

Ushers for the recital will be Artemis Lychos '47, Jean Stahl '47, Peg Leeds '47, Mary Reiley '47, and Joan Edwards '48.

EXCHANGE

(Continued from Page 2, Col. 3)

6. Be physically fit.

In addition to filling these requirements, an applicant for membership must earn 25 points by participating in a certain portion of the following activities: hiking, bicycling, canoeing, horseback riding on the trail, or snow-shoeing. When a person completes these qualifications, she will be admitted into the club.

Sounds like a very good idea if you are the outdoor type.

Louisiana State University is the only university in the United States boasting a sugar school with a sugar factory attached. The school, part of the college of engineering, like the factory, is visited and studied by technicians, chemists and researchers.

Reason for the school: on the southern part of the campus and in the LSU locale there is sugar cane everywhere.

Alumnae

The annual card party of the Beaver College Alumnae Club of Philadelphia will be held on Saturday, March 16, at Snellenberg's Auditorium at 1:30 o'clock. A fashion show is scheduled for 3 o'clock. Come and bring your friends and win one of the many prizes that are offered. Tickets may be purchased at the door.

Miss Olive Ambrose, 63 Nyack Avenue, Lansdowne, is chairman and her committee consists of Ruth Sharp Bach of Glenside, Eva Griesinger Dodge of Jenkintown, and Dorothy Reed of Aldan.

Among the graduates of Beaver college in the Women's Army Corps is 1st Lt. Jane G. Brister, now on duty in Frankfurt, Germany.

A member of the WAC since May, 1943, Lt. Brister arrived in the European Theater in May, 1945. She now wears the WAAC, American Theater and European Theater ribbons.

Before entering the army Lt. Brister was employed as Assistant Production Manager for H. W. Butterworth and Company in Philadelphia.

Lt. Brister expects to be redeployed by July of this year.

A former Jenkintown, Pa., girl who recently left a stenographic position to enroll in TWA's hostess training school is among a group of 10 graduates of the airline's January class.

She is Miss Barbara Mae Chase, of 218 Hillside Avenue, Jenkintown, and former private secretary for W. A. Clarke Company in Philadelphia.

The one-time Beaver College student this week completed TWA's four and one-half weeks' course—including attendance at a "charm school" and instruction in general airline procedures—and now is on schedule to fly her first transcontinental flight as a TWA hostess.

After serving on TWA's transcontinental passenger flights, Hostess Chase will be eligible for assignment to the Trans World Airline's international route—from key American cities to Shannon, Ireland, Paris, Rome, Cairo, and India.

Lorraine Ludlow Colehamer, May Queen for the class of '43, has named her baby girl, who was born on February 27, Diane Lorraine.

Catherine Burtis '44 was married to George W. French on November 14. Kitty has been dietitian at the Methodist Hospital in Philadelphia.

Selma Reingold ex-'46 was married on February 17 to Alfred B. Oshins.

BOTTLED UNDER AUTHORITY OF THE COCA-COLA COMPANY BY
THE PHILADELPHIA COCA-COLA BOTTLING CO.