

# BEAVER NEWS



Vol. XI, No. 4

BEAVER COLLEGE, JENKINTOWN, PA.

Friday, November 3, 1944

## United War Chest Drive Is Begun At Beaver

**Hunter Is Chairman; Beaver's Contribution Set At Minimum of \$800**

The United War Chest drive is being sponsored this year on the Beaver campus by the Y. W. C. A. Lillian Hunter '45 is the chairman and Mr. Thomas Barlow, director of press relations and instructor in music, is the faculty adviser.

### Beaver To Collect \$800

The United War Chest includes 145 local charities which were previously included in the Community Chest, as well as the U. S. O. and all other such services for the men overseas. The figure for Beaver's contribution has been set at \$800. This money must be collected by November 15.

Mr. Robert Towland, president of the board of the Philadelphia School for the Deaf, honored Beaver college with a visit on the evening of Tuesday, October 31, 1944. Mr. Towland spoke on behalf of the drive for the United War Chest.

Mr. Towland was a lieutenant-general with the eighth army air force in England for two years during this war. He has seen four wars within his lifetime. He was a guest at dinner on Tuesday evening and spoke at chapel afterwards.

### Miss Austin Speaks For WSSF

Judith Austin, secretary of the World Student Service Fund, spoke Monday evening, October 30, 1944, in Taylor chapel in regard to the annual War Chest drive. This student fund is a part of the War Chest drive which began this week.

Miss Austin stressed the importance of our contributions by illustrating various ways in which the money would be put to use. Men in prison camps will receive books, instruments, baseballs, etc. Schools and universities in foreign countries will be supplied with the necessary equipment for the education of millions of students. Miss Austin urged that we give generously in the realization that there are others less fortunate than we.

Those students from Beaver hall, who will aid in the collecting of the funds are Anne Dahnen '45, Frances Flack '46, St. Claire MacMillan '45, Mary Louise Reiley '47, Elizabeth Tanis '45, and Shirley Thalberg '45. From Ivy hall there are Betty Anne Morgan '46 and Betty Jean Redfern '46. Collecting for Montgomery hall are Mary Bonin '45, Evelynne Coleman '46, Margaret Carnahan '47, and Alice Gehrig '46. Representing the day students are Gertrude Cadzow '48, Barbara Ellis '46, Louise McClure '45, and Florence Tomlinson '47.

## Mothers Feature Red Cross, Play

The Mothers' Association of Beaver college will hold its second meeting of this year on Tuesday evening, November 7, at 8 o'clock in the kindergarten room.

Mrs. Anita Slotter, chairman of the ways and means committee, plans to give a short talk about Red Cross boxes for our American prisoners of war. As a special attraction, Mona Solomon '45, Frances Flack '46 and Ruth Schuster '45 will present "Catherine Parr", a one-act comedy by Maurice Baring. The play is an amusing scene from the domestic life of Henry VIII, and is between one of his wives, Catherine Parr, and himself.

All faculty members are cordially invited to attend this meeting as guests of the association.

## League Presents Motion Picture 'King of Kings'

**Student Body, Public To See Life of Christ Portrayed on Screen**

"King of Kings," a motion picture based on the life of Christ will be given tonight at 7:30 o'clock in Taylor chapel. The League of Christian Students is sponsoring this presentation for the student body of Beaver and for the surrounding communities.

### Among Most Popular Movies

"King of Kings" has been shown in many U. S. O. centers and has been very popular among the servicemen. Many reviewers regarded this pictorial version of the life of Christ as Cecil DeMille's greatest triumph up to that time. The scenario was based on the life of Christ as told in the gospels of Matthew, Mark, Luke, and John. The film was an entire year in the making.

The story moves from the scene where Mary Magdalene, who came to curse Christ, remained to kiss the hem of His garment, through the major episodes that led to the Last Supper and the betrayal in the Garden of Gethsemane, to the throne of Pontius Pilate, who so unwillingly gave up the "just man" to the mob clamoring for His blood, and thence up the long way to Golgotha, where He died on the cross between the two thieves. The picture concludes with the Resurrection and the Ascension.

There will be no admission charge, but an offering will be taken. Ushers for the evening are Frances Flack '46, Dorothy May '45, Louise McClure '45, and Dorothy Stonaker '46.

### Other League Activities

The League of Christian Students is planning to have a year of many and varied activities. At some of the regular weekly meetings each Wednesday afternoon during the coming year special outside speakers will be presented, as well as discussion groups held from time to time.

Last Monday, October 30, the League sponsored the very successful cake sale which was held on the sun porch. Chairman of the committee for the sale was Janet Boyer '45, and Dorothy May '45, Marjorie Michel '45, and Dorothy Stonaker '46 were members of the committee. Donations were made by both day and residence students who had attended League meetings, and a number of League members helped with the selling. It is hoped that more such sales will be held during the rest of the year.

## Melodious Sounds Mean Song Contest As Classes Meet in Secret Places

Does your class sound different lately? That's what song contest rehearsals will do for you! "Oh, what a wonderful feeling." Your chosen leader stands up and pleads with her fellow classmates to have just a teensy bit of quiet. And she gets it, because everyone is just dying to show the rest of the class that Frankie has nothing on her. Of course, she wants to help the good old class of (your guess is as good as mine) win that cup because she just hasn't had a coke in ages and besides she always envied Whitney when he rang that chapel bell.

Well, back to the scene of the crime or Who's going to win song contest? As we were saying, the leader is up front and she's waving her hands around injecting pep into dejected singers. Just when they're merrily chanting that "wait 'till you hear it" ditty, a member of one of those other classes decides that she missed her calling and should

## Forum Plans For Active Year In Varied Fields

**Sponsors Political Rally, Fall Play, Violinist, Scientist**

The Forum of Arts and Sciences is trying to arrange a program for the year which will represent as many fields as possible. Already the thirst for drama has been partially satisfied by Ruth Draper's appearance. Those who wished to state their political beliefs did so very forcefully in the political rally on October 30.

### Speaker On Children's Literature

During Children's Book Week, November 13 to 17, Miss Alice Dagleish, author of many books for children, will speak. She will be sponsored by the Forum and the early childhood education department.

On December 5, the annual fall play, sponsored by the Forum, will be seen. Under the direction of Mrs. Elizabeth Hatch, Beaver actresses will present "Ladies in Waiting", an exciting mystery.

On January 11, Magda Hajos, eminent Austrian violinist, will perform. It will be the first time a violinist has performed at Beaver, and Miss Hajos will be a brilliant representative of her field. Jule Mannix, the very popular scientist, plans to speak on and show pictures of her travels in Mexico in April.

The Forum will sponsor a talk on world affairs by Erika Mann in March.

For girls who are interested in handicraft, the avocation division is soon going to sponsor small groups who will do different kinds of handiwork.

### 5 Divisions In Forum

The Forum consists of five divisions of interest.

The literature and drama division is headed by Mona Solomon '45 with Miss Esther Metzenthin as faculty adviser. Mr. William J. Ryland and Geraldine Murkoff '45 head the World Affairs group; Mr. Lawrence Curry and Gladys Parry '45, the music division; Mr. Benton Spruance and Lee Walker '45, the art division. The avocation division is headed by Miss Bethel Caster and Marie Fisher '46, and the science division by Mrs. Margery Milne and Barbara Deverell '46.

Miss Belle Matheson is general faculty adviser, and the officers are Helen Liacouras '45, president, Dorothy Herbster '45, vice-president, Marion Plummer '46, secretary, and Carol Linder '46, treasurer.

## Mock Presidential Election Monday; All Students Privileged To Vote

### Vote on Monday!

Voting is a privilege that is almost exclusively American. Beaver is providing every student, regardless of age, with a chance to exercise this privilege on Monday, November 6. The social science office will serve as the polls which will be as authentic as possible. They will be manned at all times during the election by student clerks. Be an American here at college—cast your vote for your presidential choice.

## Political Rally Spurs Enthusiasm

Representing the Democratic and Republican parties at the political rally held in Taylor chapel last Monday night, faculty and student speakers attempted to prove which of the two presidential candidates can solve the problems of domestic and foreign affairs more efficiently and quickly and establish a lasting peace.

Speeches were continually interrupted with wild cheering and the stamping of feet by backers of both parties. Placards were paraded around the chapel by enthusiastic members of the faculty and student body, and were greeted with roars of approval.

Quoting from President Roosevelt's speech of October 31, 1940, that American boys would not be sent into any foreign wars and pointing out how Mr. Roosevelt had failed to keep this promise, Margaret Fowler '45, student speaker for the Republican party, struck at the Democratic party. This statement was the cause of much debate, heated discussion, and vociferous display between the two parties.

Rolling up her sleeves, Miss Roberta Paulhamus, faculty speaker for the Democrats, answered this accusation with the statement that "we are not engaged in a foreign war but a war that concerns us very vitally—our boys were not sent into it until we admitted that it was our war."

Student speakers for the Democratic party were Shirley Umansky '46, who stressed that the Democratic party "stands for all men and not a certain set," and Ruth Schuster '45, who dealt mainly with the problems of foreign policy and who urged the re-election of a president.

### POLITICAL RALLY

(Continued on Page 4, Col. 3)

## New Dates Listed For Calendar

The faculty at its regular meeting last night passed the following motion:

New dates for the end of the semester and for the second semester are as follows: January 26, classes for the first semester end; January 29, 30, 31, and February 1, examinations; February 2 to 4, vacation; February 5, classes for the second semester begin; March 23, third quarter ends; March 23, spring vacation begins; April 3, classes resume; May 25, classes for the second semester end; May 28, 29, 30, 31, examinations; June 3, Commencement.

Examinations will be scheduled for two-hour periods as follows: 8:30 to 10:30, 11:00 to 1:00, and 2:00 to 4:00 with wafers and milk served in Green Parlors at 10:30 and lunch at 1:15. Registration for the second semester will take place during the two weeks prior to the end of the first semester.

## Official Ballots Lend Realism To Secret Polls

**Voting To Be Directed By Students; Faculty Will Also Participate**

Election day comes to Beaver next Monday, November 6. The voting will take place from 9 to 5 o'clock in the social science office on the main corridor in Beaver hall.

The election is being sponsored by the World Affairs division of the Beaver college Forum of Arts and Sciences with Dr. William Ryland acting as faculty adviser and Geraldine Murkoff '45 as the student representative.

### Age Not A Requirement

Any student, regardless of age, may record her choice for the offices of president and vice-president of the United States at this mock election. Faculty members may also vote.

The use of copies of the official ballot of this electoral district, known as the Modified Pennsylvania form, will lend an atmosphere of authenticity.

In order to insure complete secrecy, a polling booth will be provided for the voters. At all times two judges assisted by two clerks will supervise the election.

### Prompt Announcement of Results

An announcement of the results will be made as soon as the votes can be tabulated.

Students acting as judges and clerks are: Ruth Eisen '45, Lucille Frank '48, Arabell Garis '46, Ann Gayler '47, Miriam Halpern '45, Joanne Koplowitz '47, Rosemary Krauss '45, Edith Lozow '46, Geraldine Murkoff '45, Elizabeth Oliver '45, Harriet Schlanger '48, Naomi Schlichter '45, Ruth Slater '46, Mona Solomon '45, Shirley Thalberg '45, Shirley Umansky '46.

## Red Cross Offers Canteen Course

A Red Cross Canteen course has just been organized. The group meets every Tuesday evening from 7 o'clock to 9 o'clock in Taylor hall, room 30 under the direction of Mrs. Adams, home economics instructor at Ogontz junior college.

The course consists of 40 hours, 20 of which are lectures on nutrition, and in the remaining 20 the girls gain practical experience by preparing and sometimes delivering sandwiches and snacks to the Naval hospital, Valley Forge hospital, and several other nearby hospitals. Later the group plans to go to the Servicemen's canteen across from Strawberry's to work in the kitchen, and make and serve sandwiches.

At the close of this course the girls will take an examination and after passing it, become certified. This entitles them to work as a canteen worker in any hospital or canteen in the country. They will also help in the blood banks and meet troop-trains to serve doughnuts and coffee to the boys.

The uniforms which they will wear while on duty have already been ordered. They are of light blue seersucker made in princess style, with buttons down the front, and a Red Cross insignia on the pocket. The girls will wear Dutch caps of the same material.

The chairman of the course is Leah Lefco '46, and the treasurer is Mimi Paul '47. The course is to be given at several times during the year so that everyone may have an opportunity to take it.

BEAVER NEWS

Published weekly by members of the student body of  
Beaver College, Jenkintown, Pennsylvania  
Subscription rate \$2.50; Mailed subscription, \$3.00

Editor-in-Chief	Betsy Owens
Associate Editor	Meta Riess
Editorial Staff	
News Editor	Dorothy Ingling
Feature Editor	Ruth Swartley Gellert
Assistant Feature Editor	Mimi Paul
Copy Editor	Joyce Levine
Sports Editor	Elizabeth Gold
Art Editor	Sarah Hitchcock
Columnists	
Alumnae	Alma Sollod
Drama	Jacqueline Ronkin
Exchange	Amy Buchanan
Faculty	Lenora Panaro
Feature	Shirley Thalberg
Music	Gladys Parry
Sports	Dorothy Moffett
Reporters	Estelle Blatt, Beverly Brown, Louise Choo, Virginia Hopkins, Sally Myrick, Janette Phillips
Business Manager	Meta Riess
Assistant Business Manager	Betty Jane Rothenberger
Advertising Manager	Betty Tanis
Circulation Manager	Marylou Welchons
Typing Manager	Mary Bonin
Faculty Adviser	Miss Belle Matheson

1944 MEMBER 1945

Associated Collegiate Press

Represented for National Advertising by National  
Advertising Service, Inc.

Vote! It's Your Obligation!

Every present inhabitant of the United States enjoys privileges which are but the dreams of those people living in the ruined, starving countries of Europe and Asia. Accompanying these privileges are certain obligations, among which is voting. Many people are saying now that they cannot decide between the candidates, therefore they will not vote. Is it that these people cannot decide, or is it that they cannot be bothered to decide? It's easy enough to say—"What is one vote? Let the rest of the country worry," but it takes time and patience to sift through the merits and demerits of the candidates for high positions in our government and reach a decision as to who is best. Is a little time and patience too much to ask in return for life itself? Uncle Sam has given you a free, democratic country in which to live. Help him keep it so—vote. Not for the man your neighbor says is good, but for the man you know is best.

Meta Riess

One cannot be sure what the textbooks of the future will say about the present election, concerning Mr. Roosevelt's record and Mr. Dewey's promises, but we are all positive that, as one of the major figures in the 1944 campaign, Fala will go down in history.

Are you looking forward to V-Day? Then remember that between V-E Day (Victory in Europe) and the final celebration there may be a long fight. One consolation is that when the bite is taken out of the West, we will be able to concentrate on the Nips in the East.

And speaking of patriotism, we turn our attention to phone calls. With those brief little signs in every booth requesting that phone calls be limited and a girl or two or three standing patiently outside the booth waiting for her call, we begin to wonder why it seems necessary to talk and giggle until the impatient waiter is no longer your friend.

A recent chapel speaker gave us a forceful reminder about the boys in service who will read their mail before they will eat their K rations. Just think of your own empty mailbox as that sign comes over the window. Think a moment of that lonely feeling you have and then run upstairs quickly and grab that pen.

Need students be reminded again that rising is not the only courtesy to be extended to a faculty speaker?

A Dash of Salt

With fall house-cleaning making home a veritable chaos, windows shining so transparently we almost forgot to raise one t'other day to call to the milk-man, and our salt-shaker so spotless we can even see the holes for a change, we decided to retire to a corner away from the hustle and bustle 'n say "Hello" again. It's really an experience—reminds us of the song, "My Rocking Horse Ran Away," for here the crashes and bangs are quite as realistic. If John Steinbeck, author of "The Grapes of Wrath" and other books, wants to write about realism, why doesn't he select a good old-fashioned subject such as house-cleaning with "Get Down on Your Knees" as the title, or perhaps Agatha Christie could tackle a mystery like "Where Did All the Dust Come From?". Before we get scuttled by that mop coming our way, we'd better pick up one of the last two remaining cobwebs and throw up a smoke screen—.

National election day is stealthily approaching on all fours and will suddenly pounce on many unsuspecting citizens. We urge every "major" in the school to go home to vote, if at all possible—even our new absence system is prepared to make allowances for such an important event. Before the next column is born in this space, we may know who the new president will be. Seems strange to think we've never known any other—. But in less than five days the decision will have been made by the citizens of the United States themselves. Whichever way the election goes, there should be no grumbling—the American public is not one to hold grievances for any length of time. This is a country run by the will of the majority, and it's just such a democratic state of affairs we hope to maintain in the future, with a President who, upon taking office, shall swear or affirm, "I do solemnly swear that I will faithfully execute the office of President of the United States, and will to the best of my ability, preserve, protect and defend the Constitution of the United States."

Now that the excitement of Religious Emphasis Week, the freshman Hallowe'en party, and the political rally has come and gone, everyone is anticipating the arrival of the motion picture, "King of Kings," to be shown this evening in the chapel. All preview reports have been excellent and it should prove to be one of the highlights of the school year. Filmed a few years ago in Hollywood, it was very widely acclaimed.

Can't you just see busy New Yorkers hoisting a white flag and madly waving it in a distressed attempt to attract a cabby's attention? —a cabby whipping peacefully over New York streets in the latest thing in helicopters!! Or some morning you may race down the street to catch a helicopter, not a bus. It's a delightful idea, and perhaps practical, if we can judge from the number of companies which are definitely interested. There are no less than forty-six air lines, surface transportation companies, and individuals who, according to a recent newspaper article, have applied to the Civil Aeronautics Board for "permission to provide additional air service for Philadelphia after the war, or earlier if possible." A local helicopter service is included among the applications, so open your minds to the prospect of having the whirling dervishes as common as vitamin pills.

Flash!! Shoe stamp, airplane three, became good Wednesday. There's no excuse for heels sticking out or for blaming that pigeon-toed attitude on a shoe worn down on the other side. Follow us to the nearest shoe-store.

Froma Shakir

THEATER:

PEEPS AND SQUEAKS

"The Princess Royal of the American Theater", by name Ethel Barrymore, is now playing in "Embezzled Heaven" at the National theater in New York after having spent a fortnight appearing in Philadelphia.

This new play by L. Bush-Fekete and Mary Helen Fay is based on a novel by Franz Werfel and is presented by the Theater Guild. Plot is not the most important element in "Embezzled Heaven", but characterization and a moving theme hold first place.

"Embezzled Heaven" is concerned with Teta, a cook in the Argan Castle near Prague. Teta is a devout Catholic woman who has no blood relations in the world except a young nephew, Mojmir. She is worried because she thinks that she will not reach heaven when she dies because there will be no one on earth to pray for her. She believes that admittance to heaven is based on the social system.

In 1913 she makes an agreement with Mojmir's mother to take care of the boy's education providing he becomes a priest. The greedy mother accepts the bargain without considering the make-up and qualities of her son. Teta continues to send Mojmir large sums of money for a period of 25 years and he writes to his supporter frequently. Finally he communicates to Teta that he has been ordained a priest.

On the contrary, however, Mojmir has become a circus barker. When

Teta finds out that she has been deceived, she is shattered and is convinced that she will never go to heaven.

In the meantime she has become attached to a young priest who is kind to her. They set out on a pilgrimage to Rome and are received by the Pope. Teta confesses to the Pope the folly she has been guilty of. He tells her that she is a good woman, but has acted foolishly and that he will remember her at Mass the next morning. The young priest adds that one reaches heaven not on the social basis, but on love and good deeds.

Since Teta is sick, weary, and old, the excitement proves too much and it is evident that she is dying.

A member of the Vatican wonders if she will go to heaven. The person in charge of the pilgrims says that if she does she probably will enter through the back door whereupon the tag line of the play is uttered to the effect that those who have the humility to enter through the back door are the ones who really reach the Kingdom of Heaven.

Every single member of the large cast is superb with top honors going to Miss Barrymore as Teta, Albert Basserman as the Pope, Edward Franz as Mojmir, Martin Blaine as the young priest, and Sanford Meisner as a servant in the castle.

"Embezzled Heaven", has been staged by B. Iden Payne with settings designed by Stewart Chaney.

Log-a-Rhythms

There are still a few students who have not as yet paid their fifty cents down for a *Beaver Log*. Since all subscriptions must be started this month, these girls will be a sorry lot next May, when every one receives her year book, if they do not subscribe now. Wednesday night is *Log* night. Be certain your *Log* salesman does not pass by your door!

Student pictures have been taken. Ruth Draper's recital, the freshman

Hallowe'en party, the freshman reception, and the political rally have already been recorded for the years to come. Our student photographer has been busily snapping candid all over the campus. Who knows, maybe you have been caught unawares?

If your face you'd like to see  
Shining out so merrily,  
Come and join the happy mob  
Buy the latest *Beaver Log*

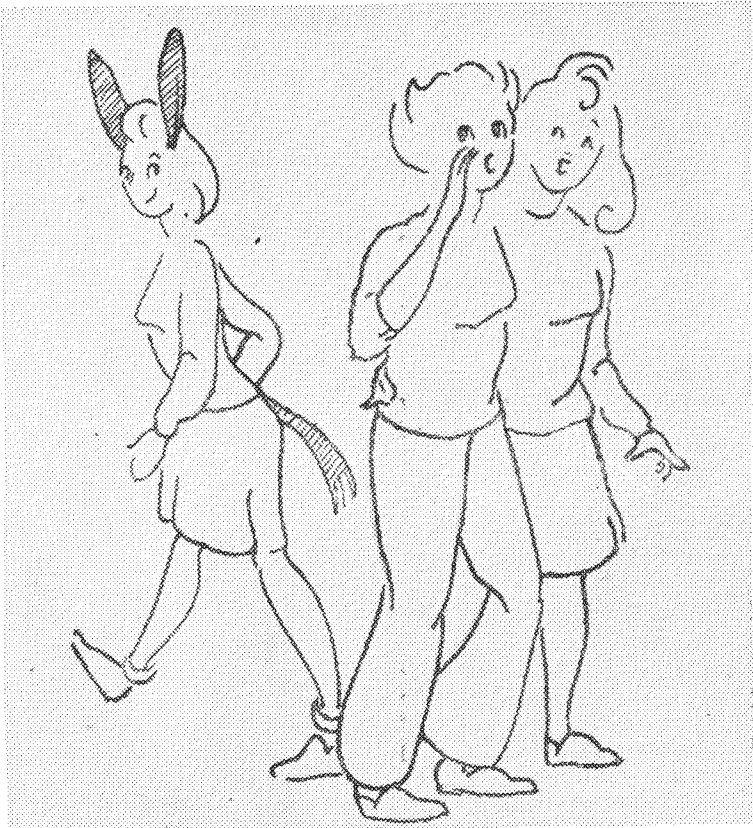
On Other Campuses

Freshmen of Moravian college, Bethlehem, not only have to wear their hair in one inch braids but must be equipped at all times with a tape measure for the convenience of the upperclassmen in measuring the braids. Other parts of each freshman's apparel are books carried in old pillowcases, infant's cap, rattle, no make-up except a red heart on each cheek, ribbons worn alternately on the fingers, and a sign containing a self-portrait hung over the shoulders.

When asked what she found the most annoying in her teachers, a Cedar Crest student curtly replied, "They come to class."

Temple university now has a Bureau of New Ideas which will serve as a clearing house for constructive suggestions looking toward the improvement of the work of the university. Both faculty and students are asked to cooperate by enlisting their creative imagination and making known their suggestions.

The art department of Immaculata college has inaugurated a course in arts and crafts which covers the fundamentals of making ceramic jewelry and pottery. Students will make pins and earrings of various floral designs as well as pin trays, pitchers, cigarette boxes, and other novelties.



"She wants everyone to know she's a Democrat!"



Peter's Patter



This is Peter patterning along again in my usual way. So nice, the weather, I mean. If only old Sol would stay out the way he has been it would be great. After all our worrying about the rain Friday turned out beautifully and the hockey team had a great day out at Bryn Mawr. They won, remember? 4-1.

The journey to Bryn Mawr was very interesting. The train, in fact our car, was full of Northeast High School patriots on their way to a football game, and Beaver girls on their way to Bryn Mawr. All in all, we had a very noisy and hilarious time of it. Finally the gals got there and the game began. Fast and furious it was and we came out on top, 4-1. If you all could have seen Scotty tearing down the field like an express train and scaring the goalie out of ten years growth. It was really a howl, but the goal was a honey. Brownie and Gorman shared the honors with a goal apiece at center forward. Pep scored the other goal early in the first half to start things off. All in all, I was real pleased with my gals. Very nice. This Saturday they take on Ursinus. Let's see all of you out there rooting for them, eh what.

\* \* \* \* \*

Last Sunday our golfing gal played a tough one with Bob Hamilton as her partner. Dotty wasn't too good, but neither was Hamilton. Sammy Snead and Helen Siegel were a much too powerful combination. It was a good match though, and those who went, Miss Cumbee and Mrs. Baier, Kitty Veit, Wandalee, Betty Hartey and all the others, enjoyed it immensely. Better luck next time, Dotty.

\* \* \* \* \*

Monday hockey practice was a rather sad affair, but it was funny too. Everyone was asleep, and to top it off, the poor gals who were taking their official rating test had a terrific time. We really did play horribly, but we have hopes for Saturday.

\* \* \* \* \*

The high school hockey play day was a great success. Eight teams arrived and competed for the honor. The team of Upper Darby's forward line and Jenkintown's backfield won the tournament. They really did play well. Quite a combination. All the other teams played well and had a grand time. Some of our younger coaches in the vicinity had a happy reunion though they were previously rivals. Many of the juniors who were refereeing had offers to officiate at some games in the near future. Profitable anyway, eh juniors?

\* \* \* \* \*

If I may make a correction, it was the jolly junior phys. eds. that had the spaghetti dinner the other night and it sure was good.

\* \* \* \* \*

The political rally was well attended by our phys eds. Somehow Miss Cumbee, Pepper, and Margy Hanson were the only ones for our President. Oh me, rather lopsided. Me, I'm for the guy what raises more lettuce!

\* \* \* \* \*

Many groups of two to four students will participate in the Scavenger hunt sponsored by the A.A. on Friday, November 10, at seven thirty in the evening. Girls will meet in Beaver lobby and start from there.

Chairman Lee Brust '47 announced that the winning team will receive a large box of food. Required objects for the hunt will not be available in the dormitories, but will be found on campus. Each group will have a list of what they have to get—the group having acquired the greatest number of objects will get the food.

Beaver Downs Bryn Mawr

Presenting a fast moving and sustained attack, Beaver's aggressive hockey eleven scored a decisive victory over Bryn Mawr by a 4-1 score last Friday afternoon at Bryn Mawr.

The action was brisk from the onset as each eleven fought its hardest to push through a tally and the play shifted from one goal to the other. The scarlet and gray lassies drew first blood, however, when Elenore Pepper, left inner, sent the ball into Bryn Mawr's cage on a hard flick within the first five minutes of the first half. But the Bryn Mawr girls, duly aroused, lost no time in launching an all-out offensive and within the next few minutes had tied it all up on a goal by Gifford, center forward.

Once more the two teams endeavored to take the lead and again Beaver was successful. The scarlet and gray lassies-up in Bryn Mawr's striking circle-loosed a hard drive at the cage which the Bryn Mawr goalie kicked out in the direction of Beaver's left inner who had been drawn out of position on the last play. But, like a shot out of a cannon, the scarlet and gray's center forward, Brownie, sped over and drove a beautiful shot into the Bryn Mawr cage for a marker, which once more gave Beaver the lead. Although the Bryn Mawr lassies launched an all-out offensive to make up this deficit, they were unable to get past Beaver's efficient backfield for a score, and the half ended with Beaver holding a 2-1 advantage.

Bryn Mawr opened the final period with a vengeance and lost no time in hammering away at the scarlet and gray's goal but, as before, Beaver's backfield proved to be an insurmountable obstacle.

Much credit for Bryn Mawr's unsuccessful attempt went to Beaver's goalie, Barbara Ellis, who had several beautiful saves to her credit during this crucial period. In their attempt to score, Bryn Mawr's backfield had unwittingly been drawn out farther than usual, and after a good hard clear by the scarlet and gray backfield, Scottie, Beaver's right inner, started off on a solo dash of about 40 yards with no Bryn Mawr backfield to interrupt her flight. As she approached the goal she cleverly drew the Bryn Mawr goalie out of position and drove a hard shot into the far corner of the cage for the scarlet and gray's third tally of the game.

Once more, the battle see-sawed from one end of the field to the other and although Bryn Mawr was awarded quite a few corners it

New Leaders On Cheering Squad

Cheerleading is once more in the limelight. The squad consists of six girls under the leadership of Virginia Hopkins '47. Eloise MacDonald '47 and Adrienne Thomas '47, members from last year, with three new cheerleaders, Helen Adam '48, Carol Roland '48, and Joan Slockbower '47 make up the squad.

The girls, in their snappy gray skirts and red sweaters, are attempting something new this year by following the team to the games which will be held away from Beaver.

The squad is trying many new cheers, formations, and songs. One of the newest songs is the pep song, "Stand Up and Cheer."

The cheerleaders dressed in the traditional red and gray, are always present at home games to lead enthusiastic spectators in cheers and songs and they are also planning to attend some of the away games which are yet to be played.

was unable to capitalize on them. Late in this final period, Ann Gorman, Beaver center forward, rushed a hard-hit ball received from Beaver's left wing, and pushed it into the cage for the visitors' fourth and final tally. As the final whistle blew a few minutes later, the scarlet and gray lassies walked off the field with their second victory in as many starts.

Beaver's Junior varsity was not so lucky as their more experienced teammates and lost their game to a Bryn Mawr second team of unusual calibre by the score of 9-0.

LINE-UP	
Beaver	Bryn Mawr
Gold	RW Richardson
Scott	RI Walker
Brown	CF Gifford
Pepper	LI Foster
Moffett	LW Horn
Crosson	RH Bagley
Roberts	CH Miles
Blodgett	LH Hedge
McFeater	RF Kaltenthaler
Germain	LF Rebmann
Ellis	G Hyatt
Gorman substituted for Beaver.	
Second team line-up.	
Beaver	Bryn Mawr
Bulkley	RW Kaufman
Fowler	RI Cary
H. Curran	CF Gilmartin
Hanson	LI Turner
Harmer	LW Gernderson
Weest	RH Young
P. Curran	CH Cadbury
Yost	LH Fecardi
Fretz	RF Frank
Mahan	LF Manning
Reutter	G Cushing

Actresses Asked For Impressions Of Forum Play, 'Ladies In Waiting'

Between classes, in the Chatterbox and in Montgomery lounge the material for this interview was gleaned from the busy actresses of "Ladies in Waiting." Cyril Campion's mystery melodrama, which will be presented on Tuesday, December 5.

The nine members of the cast all agreed that the play itself is super. They all love their assignments, and from their grinning faces it was obvious that they having loads of fun in getting the presentation ready.

After a query as to whether they were following any particular models in their characterizations, Marjorie Michel '45 confessed, "I am attempting to inject into the portrayal of Lady Spate a modified Billie Burke-ish quality, but I do mean modified."

Estelle Blatt '45, as Janet Garner, is "striving to achieve a mixture of what I think Judith Anderson and Florence Reed might have done with the part when they were my age. With a twinkle in her eyes, Estelle added, "That's a pretty big order, isn't it?"

"My model is none other than Dick Tracy, I mean a feminine version of Dick Tracy, of course" said Jacqueline Ronkin '45, who is playing the lady detective, Pamela Dark.

Suzanne Sharnik '46 and Marilyn Meister '46, who will appear as sis-

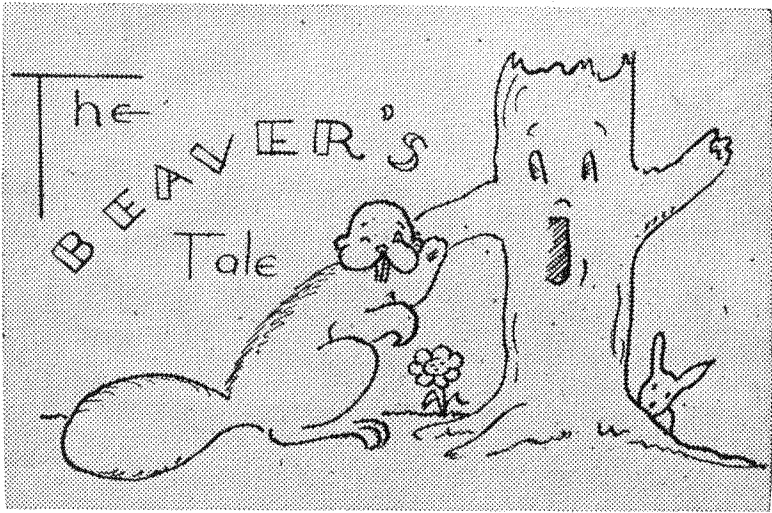
ters in the play, like the idea a great deal. In fact Suzanne asserted, "This sister act appeals to me no end." Marilyn questioned, "Do you think we look alike?" As a matter of fact, they do resemble each other.

Shirley Everitt '47, who has the part of Una Verity, jokingly stated, "In 'Ladies in Waiting', I'm supposed to be lovely and engaged, but what bothers me is that I don't use Ponds."

"Getting the part of Dora Lester thrilled me," said Joan O'Dwyer '47. "It's just the kind of role I've been longing for."

Betty Jane Anderson '48 and Frances Wallace '48, making their first appearances in a Beaver play, are naturally filled with excitement. Both girls are portraying maids and claim that they aren't just playing ordinary maids. Frances added, "Oh no, we are very special maids."

The members of the cast are not at all nervous in anticipating Tuesday evening, December 5, but they did admit that butterflies would probably be flying around in their stomachs around that date. Estelle happily asserted, "Nervous? Why I'm looking forward to December 5, and Jacqueline enthusiastically agreed, "I can hardly wait for that night of nights to arrive!"



The green has left the trees and taking time off from those long walks in the golden woods we come to tell you what's been going on with the Beaver damsels.

Sophia Brandt had a man in blue around the campus last Sunday . . . Helene Samuels had a pleasant weekend guest . . . Lou MacDonald's dates were a pleasant attraction over the weekend . . . Edie Lozow and Alice Prensky were off to the Navy-Penn game . . . H. J. Polis had a couple of gay weekends in N. Y. . . . Kitty Osler's soldier friends on Monday made it a nice way to begin the week . . .

Several girls had a freezing but wonderful time when they went to see and hear President Roosevelt last Friday. Among the rooters were Connie Tomberg, Lennie Scheid, Shirley Marglis, Gerrie Murkoff, Rose Krauss and Sisi Kaufman . . . And many's the story a couple of them can tell you about that day! . . .

The latest gals to join the ranks of the engaged are Smitty as of a whole week ago and Joan Schrimser as of a few days ago . . .

We seem to have had our fill of persistent young men around here lately. Sunday evening four of the species pranced into Beaver hall, pounced into the chairs (one sprawled out on a sofa) and sat smoking cigars—sight of all sights . . . they didn't last long . . .

Some more of the old gals were back last weekend—Becky Crothers '44, Emma LaRue '44, Grace Vanderhoff '43 and Sally Anthony ex '45 paid visits to the Alma Mater . . . Speaking of alumnae reminds us that Anne Flaherty '44 will soon be a Missus . . .

That little sign "Mail Is In Boxes" is thrown over the post office window and dozens of moans are heard, "Are you sure there isn't one for me?" But somehow we always manage to carry on in hopes of better luck on the morrow . . . Muriel Saline is always present at distribution time—living between letters from Art . . . Ellie Felter had an interesting letter from some unknown spot where they drink beer instead of water . . . And then

Uses For French Being Explored

If you've been dying to talk to some of those cute French sailors, but just wouldn't dare—with your pronunciation—perhaps we can do something for you.

Since war and finances have whisked away French house, French corridor, and the possibility of getting French movies, there have been no successful conversational groups here at Beaver. However, there is no reason why we couldn't have such a group if enough people (six or eight would do) are interested—not for credit or as any sort of requirement, but just for the fun of it and to help yourselves.

Perhaps, also, there are some of you who would rather not limit your French-speaking to Beaver. International House at 3905 Spruce Street in Philadelphia is open every Saturday and Sunday and you are all invited to go in at any time, free of charge. International House is run by Mrs. Annette Diaz, and one of its purposes is to entertain foreign servicemen. See what we mean about the French sailors?

If any of these ideas interest you, if you have any suggestions about social activities or forming a group, just drop a note in Hope Engleman's mail box.

there are the freshmen who are beginning to realize that even a bill is good to discover in those too often male-less mail boxes . . .

So the week of Spooks has passed, and even if we didn't manage to get out and mark up sidewalks and ring doorbells, we did feel the spirit of Hallowe'en come over us when the freshmen turned the gym into a gay barn and gave a delightful party . . .

Then there's the story about the wonderful time Estelle Blatt, Berkie and Betty Greenberg had in N. Y.—as evidence we point to those tired eyes which may have disappeared by now . . . We wonder if Betty wore the black sequin affair which her Canadian admirer sent her . . .

Expectations—Lynn Yost is hopefully awaiting Thanksgiving vacation . . . Kay Vitella is still waiting for that phone call from Joe . . . Janice MacDonald can hardly wait to cast her vote for F.D.R. now that Shutt is all for Dewey . . .

Montgomery girls are really having a time for themselves! D. Ingling dated three different men in one weekend . . . Jean Stahl's man was home on a week's leave and we saw very little of Jean at the time . . . Jane Griffiths manages to keep the phone wires going every evening . . . Brooksie has had some very exciting weekends—and not only does she believe in variety—she gets it . . .

Well, gals, three weeks from now we'll all be getting a few days of furlough. So keep your nose to the grindstone and here's to fun.

So long, The Beaver

Faculty News

Of interest to the politically minded—Miss Mary P. Clarke, professor of history, has in her office one of the first campaign buttons ever used in this country. It was used in the Harrison-Tyler election of 1840. Everyone is welcome to stop in the History museum to examine it.

\* \* \* \* \*

Miss Isabelle F. Bull, professor of home economics, and Mrs. Jane S. Becker, assistant professor of home economics, attended a meeting of the Home Economics association of Philadelphia last month at which time Dr. Pauline Beery Mack, professor of chemistry at Pennsylvania State college, reported on the mass nutrition study in Pennsylvania.

\* \* \* \* \*

Miss Isabelle F. Bull, professor of home economics, was recently initiated into the Alpha chapter of Delta Kappa Gamma, a national honorary fraternity in education. The initiation took place early in October at the Women's City club in Philadelphia.

\* \* \* \* \*

The Faculty club of Beaver college held a meeting on Tuesday evening, October 31, at 7:15 at the home of Mrs. Lillian Bassett, assistant professor of chemistry and physics. The main purpose of this meeting was to discuss ways of raising money for the annual Faculty club scholarship which is given to a senior for graduate work.

\* \* \* \* \*

Mrs. Lillian Bassett has once again inaugurated the custom of having students to Sunday tea. The first of these will be held on November 12. Seniors are invited to come to Mrs. Bassett's home on this date to have tea and listen to the symphony.



## Much Talent Seen Here At Beaver By Mrs. Hatch, New Professor

"I think there is a great deal of talent here at Beaver; the girls are interesting and seem interested." With these words Mrs. Elizabeth A. Hatch, assistant professor of speech, graciously opened a recent interview in the English office. Though this is her first year at Beaver, Mrs. Hatch, formerly a teacher at Dwight School for Girls in Englewood, New Jersey, and also a former faculty member at Sarah Lawrence college, Bronxville, New York, has become a very familiar figure to many a Beaver student, both as teacher of speech and dramatics and as director of the forthcoming dramatic production "Ladies in Waiting."

A native New Yorker, Mrs. Hatch appeared in many stage productions, the very latest having been "Life Begins." Not contented with acting on the stage, she did radio work in connection with the National Broadcasting Company, and also wrote plays for other net-

works. She has travelled both in continental United States and abroad, having visited France, Italy, and Switzerland before the war.

Wondering when a busy person like Mrs. Hatch finds time to play, we ventured to ask her how she spent the past summer, and weren't too taken aback when she informed us that she taught. Her work was extremely interesting as she taught English to German, Czechoslovakian, and Swiss refugees for the Committee for Refugee Education in New York city.

Another interesting bit of work she has done was to teach classes in acting for nurses at the Bellevue hospital in New York city. She found them very apt pupils.

When asked if she had any favorite color, Mrs. Hatch laughingly replied that she had no particular favorite. She is a lover of good music and of all the other arts, and can never get her fill of nice weather.

Her new home is on the top floor of the Clubhouse and she has bestowed upon it the very appropriate name of "Eagle's Nest."

With the last remark from Mrs. Hatch that the college production, "Ladies in Waiting", will be presented on Tuesday, December 5, 1944, we regretfully ended this pleasant interview with an extremely interesting and likeable personality.

## Practice Limited For Song Contest

Song contest practice hours have been scheduled for the month of November. This year the hours will be timed by the clock and kept to a minimum. As previously announced each upper class will practice ten hours in all, and the freshmen, twelve hours. Rehearsals will be in charge of Helen Liacouras '45, Dorothy Germain '46, Doris Goodwin '47, and Louise Choo '48, who are song contest leaders of their respective classes.

The hours and places of practice are as follows:

**Seniors:**  
November 6-7 p.m. .... Chapel  
November 7-1 p.m. .... Gym  
November 8-1 p.m. .... Chapel  
November 8-7 p.m. .... Hunt. 10  
November 9-1 p.m. .... Hunt. 10  
November 13-1 p.m. .... Gym  
November 13-7 p.m. .... Chapel  
November 14-1 p.m. .... Hunt. 10  
November 14-7 p.m. .... Kind. rm.  
November 15-1 p.m. .... Hunt. 10  
November 15-7 p.m. .... Hunt. 10  
November 16-1 p.m. .... Chapel  
November 16-7 p.m. .... Hunt. 10  
November 17-7-10:30 p.m. .... Gym  
November 20-1 p.m. .... Gym  
November 20-7 p.m. .... Chapel

**Juniors:**  
November 6-7 p.m. .... Hunt. 10  
November 8-1 p.m. .... Hunt. 10  
November 9-1 p.m. .... Kind. rm.  
November 10-1 p.m. .... Gym  
November 13-7 p.m. .... Hunt. 10  
November 14-7 p.m. .... Hunt. 10  
November 15-1 p.m. .... Gym  
November 16-7 p.m. .... Chapel  
November 17-7 p.m. .... Hunt. 10  
November 20-7 p.m. .... Gym

**Sophomores:**  
November 6-7 p.m. .... Gym  
November 8-7 p.m. .... Gym  
November 9-1 p.m. .... Chapel  
November 13-7 p.m. .... Gym  
November 14-7 p.m. .... Chapel  
November 15-7 p.m. .... Gym  
November 16-7-10 p.m. .... Gym  
November 17-7 p.m. .... Chapel  
November 20-5:25 p.m. .... Gym

**Freshmen:**  
November 6-1 p.m. .... Chapel  
November 7-1 p.m. .... Chapel  
November 9-1 p.m. .... Gym  
November 10-1 p.m. .... Chapel  
November 13-1 p.m. .... Chapel  
November 14-7 p.m. .... Gym  
November 15-7 p.m. .... Chapel  
November 16-1 p.m. .... Gym  
November 17-1 p.m. .... Chapel  
November 18-7 p.m. .... Gym  
November 20-1:35 p.m. .... Gym

Christmas Cards, Gifts, Seals,  
Tags, Wrappings  
**Sharpless Stationery  
Service**  
727 WEST AVENUE  
Jenkintown, Pa.

**F. W. WOOLWORTH**  
JENKINTOWN  
"We can supply your school  
needs"

## S. G. A. Discusses Many Topics

The student body met in Taylor chapel for the second S.G.A. meeting of the year on Wednesday, November 1. Jean Gates '45, president, opened the meeting. After the minutes of the last meeting were accepted as read, Barbara Lowe '45 was inducted into office as secretary, and Martha Davis '47 was inducted into office as representative at large.

Miss Paulhamus, registrar, spoke concerning a request made last year through the Committee on Religious Life that evening chapel be replaced by a morning chapel period. After some discussion, it was decided that the students would think over the consequences of such a change and a vote would be taken later.

Jean Kilpatrick '45 gave a report on the absence system as explained to her at the meeting of the Committee on Absences. A motion was passed that a class may dismiss itself after signing attendance without being given cuts if a department head does not come to class within fifteen minutes and another member of the faculty within ten minutes after the beginning of the period.

A motion was made and passed that Beaver financially "adopt" a child war victim and take up a collection for its welfare. Lois Jackson '45 provided the particulars for this and was appointed to name the collectors.

**THE SILVER SPRUCE  
DINING ROOM**  
Luncheon 11:30 A.M. - 2:00 P.M.  
Dinner 5:00 P.M. - 7:30 P.M.  
Except Sunday

**BLAETZ  
BROTHERS**  
Incorporated  
Printers and Publishers  
Printers of  
BEAVER NEWS  
JARRETT & ROCKLEDGE  
AVES.  
Fox Chase, Phila.

## Glee Club Lists Members for Year

The Glee club, under the direction of Mr. W. Lawrence Curry, professor of music, has a rehearsal each Tuesday evening, directly after chapel. Officers of the club include the president, Lillian Hunter '45; secretary, Janet Boyer '45; treasurer, Dorothy Herbster '45; manager, Gladys Parry '45, and accompanist, Emma Leeds '47.

Returning members are the following: first sopranos—Eileen Bonacci '47, Mary Louise Bossard '47, Beverly Brown '47, Barbara Ellis '46, Margaret Fowler '45, Lillian Hunter '45, Jean Kilpatrick '45, Artemis Lychos '47, Louise McClure '45, Gladys Parry '45, Marion Plummer '46, Jean Stahl '47, and Meta Riess '45.

Second sopranos — Marjorie Arbuckle '47, Janet Boyer '45, Evelynne Coleman '46, Carolyn Doernbach '47, Margaret Fassett '47, Frances Flack '46, Muriel Harbers '46, Mary Maroney '45, Betty Morgan '46, Ann Thayer '47, Louise Van Tries '45, Marilyn Yost '47, and Ann Gorman '46.

Altos—Joyce Blodgett '45, Edith Daub '46, Mildred Eisele '47, Doris Goodwin '47, Elizabeth Harper '47, Grace Hartmann '46, Dorothy Herbster '45, Dorothy Ingling '47, Virginia Jonas '45, Elizabeth Oliver '45, Betty Jean Redfern '46, Ceres Rogokos '45, Elizabeth Wiggins '46, and Helen Liacouras '45.

Girls who have recently become members of the organization are as follows:

First sopranos—Grace Borden '48, Louise Choo '48, Lola-Avlin Grosier '48, Nancy Crosson '48, Eileen Joanne Drexler '48, Jeanne Fretz '48, Aldyn Graham '47, Eleanor Howard '48, Babette Leyrer '48, Marie Lo Presti '48, Phyllis McGrew '48, Ida Miller '48, Florence Tomlinson '47, Ruth Yearsley '48, and Jean Scott '48.

Second sopranos — Patricia Amy '48, Jean Keck '48, Juliet Ornellas '48, Dorothy Passon '48, Mary Pular '48, Martha Rasmussen '48, Jean Richardson '47, Muriel Rueemmler '48, Barbara Scull '48, Margaret Swart '48, and Nancy Wall '48.

Altos—Shirley Blodgett '47, Dorothy Gross '48, Margaret Ingling '48, Emily Johnson '48, Isabel Lockwood '48, Marilyn Marshall '48, Audrey Minchin '47, Lenora Panaro '45, Ruth Schuster '45, Natalie Scholz '48, Anne Stelos '48, Jeane Williams '48.

### POLITICAL RALLY

(Continued from Page 1, Col. 4)  
dent whose "world-wide experience and prestige are necessary now."

Combining politics and science and addressing "fellow Republicans and others," Mr. Paul R. Cutright, faculty speaker for the Republican party, declared that this country needs a man for president "who

## Lockwood, Myrick Are Co-Chairmen Of Freshman Hallowe'en Party

Clad in dungarees and pinafores, those attending the Freshman Hallowe'en party last Friday night were gaily entertained by the efforts of Isabel Lockwood and Sally Myrick, co-chairmen, and their committee members.

Even the most dignified at Beaver discarded their pride when they

## Exhibition Prints To Be At Beaver

Beginning Monday afternoon, November 6, Mr. Benton Spruance, professor of fine arts, will have 20 lithographs on exhibit in Green Parlors.

Among the prints that will be shown are "The Second Front", "Susanna and the Elders", "Fathers and Sons", "Resurrection", "End of Waiting", "Forward Pass", "The People Play-Summer", "Ridge Valley Churches", "Nero", "Tulpehocken Road", "From the Sea", "Henri Marceau", "Souvenir of Lidice", "Carl Ziggrosser", "Lamentation", and "Farewell to the Dawn."

The print entitled "Portrait—Miss M. H." has as subject Miriam Halpern '45.

These lithographs have been on exhibit until very recently at the Print Club in Philadelphia and they will be exhibited in New York during December. Their appearance at Beaver is sponsored by the fine arts division of the Forum of Arts and Sciences.

## Mrs. Joseph Marsh Visits Beaver

Mrs. Joseph W. Marsh of the class of 1881, one of the oldest living alumnae of Beaver college and an honorary member of the Board of Trustees, visited her Alma Mater on Tuesday, October 24.

Mrs. Marsh and her daughter, Mrs. Rose Marsh Payton, had lunch in the students' dining room with Dr. and Mrs. Raymon Kistler, Miss Ruth L. Higgins, Miss Roberta Paulhamus, and Mrs. Charles W. Zurbuchen.

Tribute was paid to Mrs. Marsh by Beaver students in singing the Alma Mater on her behalf.

Mrs. Marsh makes her home in Pittsburgh. Her daughter is the wife of the Washington correspondent for the Methodist weekly paper, "The Christian Advocate."

will restore prestige" and one "who is young and far sighted."

Florence Hudnit '46, speaking for the Republicans and referring to Thomas E. Dewey, Republican nominee, as "his excellency", declared that only through the election of Mr. Dewey could there be formation of a lasting peace.

crawled through the large barrel blocking the entrance into Huntingdon gym, which was decorated in traditional Hallowe'en fashion.

Marie LoPresti '48 led the entertainment with singing and imitations of "wee Bonnie Baker". The now famous duet of Louise Choo '48 and Juliet Ornellas '48 followed with two Hawaiian numbers. After listening to sighs emitted by the audience, Isabel Lockwood '48 graciously consented to two encores of her "Stormy Weather" by singing "Embraceable You" and "Chloe."

Frances Ullman '48 and Elaine Reed '48 brought out the laughter when they performed their monologues.

Refreshments followed the entertainment in the form of cider, doughnuts, and candy.

Ruth McFeeter '48 led the game of "Musical Chairs" which had all the upper-classes scrambling for the nearest seat.

The party ended with everyone joining hands in the "Virginia Reel."

## Alumnae

Mrs. Ruth H. Zurbuchen, executive secretary of the Alumnae association, will visit and hold a planned meeting at each of the following Alumnae clubs; Johnstown, Pa., Pittsburgh, Pa., Reading, Pa., Buffalo, N. Y., Rochester, N. Y., Binghamton, N. Y., Chicago, Ill., and Cleveland, Ohio. She has just returned from similar Alumnae meetings in Boston, Mass., Connecticut Valley; New York City, N. Y., and Philadelphia, Pa. The purpose of these meetings is to stimulate interest in the Alumnae association.

Florence Smith Germond '34 and Eleanor Martin Germond '35 represented Beaver College alumnae at the annual Herald Tribune forum, October 16 and 17, in New York City, N. Y.

Adelaide Duncan Estill '32 represented Beaver college at the inauguration of the new president at Wooster college, Wooster, Ohio. Mrs. Estill writes, "Thanks to Beaver's early founding, I was well up in the line and had a seat on platform just in back of the speakers. It was a beautiful chapel and a beautiful service. I was impressed by young Dr. Lowry and his plans for Wooster."

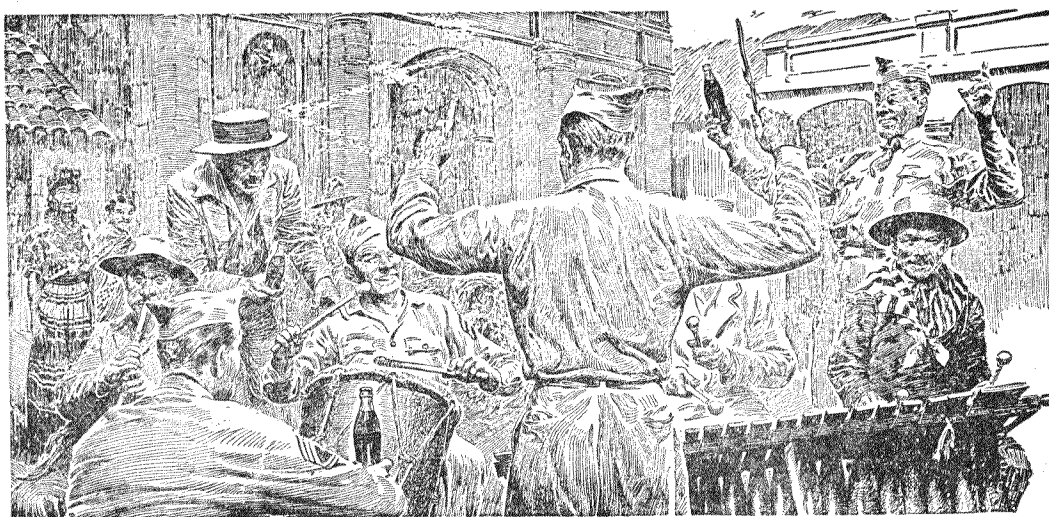
OGONTZ 599

**Rydell Hosiery Shoppe**

Handbags, Lingerie, Costume  
Jewelry, Hosiery Mending,  
Blouses

713 West Ave., Jenkintown, Pa.

## Have a "Coke" = ¡ Adelante con la musica! (GET IN THE GROOVE!)



### ...or getting along in Guatemala

Music and Coca-Cola spell friendship among our Latin-American neighbors just as they do here at home. Have a "Coke" is an invitation of welcome as quickly understood in Guatemala as in Georgia. In many lands around the globe, Coca-Cola has become the same symbol of friendliness that it is in your own living room.

BOTTLED UNDER AUTHORITY OF THE COCA-COLA COMPANY BY  
**The Philadelphia Coca-Cola Bottling Company**



"Coke" = Coca-Cola  
It's natural for popular names to acquire friendly abbreviations. That's why you hear Coca-Cola called "Coke".