



Beaver Health Director Inducted Into WAVES

Hilda Guenther Begins Training At Smith College

Freshmen Adviser Receives Commission Of Lieutenant, J. G.

Miss Hilda Guenther, head of the department of health and physical education at Beaver college, has been inducted into the WAVES and will leave college this weekend to report to Smith college for a period of training.

Received Commission

Miss Guenther, who received the commission of lieutenant, junior grade, has been in charge of the physical education department at the college for the last four years. Prior to coming to Beaver she was director of physical education of the city of Port Washington, Wisconsin, public schools.

Has Wide Experience

A graduate of the Port Washington schools and the University of Wisconsin, where she received her B. S. and M. S. degrees, Miss Guenther has been director of physical education at the Tennessee Coal, Iron and R. R. schools, Birmingham, Alabama; Washburn college, Topeka, Kansas and the State Teachers college, Valley City, North Dakota.

Miss Guenther, a member of the National Physical Education Honor society, Phi Delta Pi, is also secretary of the South Eastern Pennsylvania District of the Health, Physical Education and Recreation association. While at Beaver college, in addition to her teaching duties, she has been freshman adviser, chairman of freshman week, and faculty adviser to the nominating committee, and adviser to the Athletic association.

Hobby Groups Make Many Things In Wood And Clay

The hobby clubs of the avocational interests division of the Forum of Arts and Sciences have been meeting regularly since their organization. The ceramics club meets twice a week on Wednesday afternoons from 3:30 to 5:30 and on Wednesday evenings from 6:30 to 8:30 under the instruction of Mrs. M. F. H. Webb, in Huntingdon 11. Deena Rose is the student chairman, and Mrs. Frances G. Dagar is the faculty member representing the Forum.

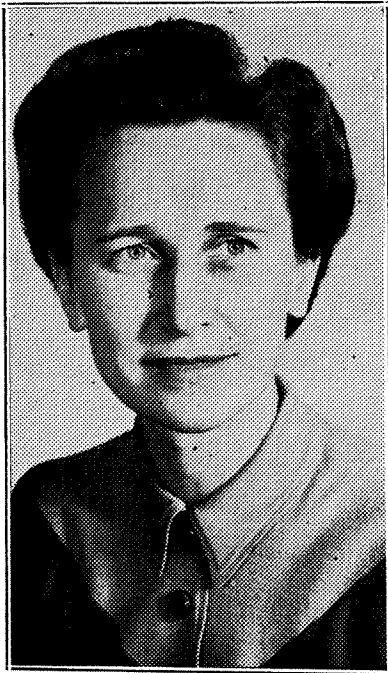
Mrs. Webb has spent several years among the Dunkards and Mennonites; there she studied their Pennsylvania Dutch expressions in design and coloring.

Among the pottery pieces the girls have made are tiles, bowls, ashtrays, and candy dishes. The various articles of clay are molded into shape and fired in a kiln in Mrs. Webb's studio.

It is Mrs. Webb's hope that although this club may be considered a hobby club, the girls will also know the techniques, uses, and place of pottery. She also stressed the fact that ceramics are used very successfully in occupational therapy. Right now the ceramics group quota is filled, but for students who are interested, there will be a class next semester.

The woodcraft club is under the instruction of Mr. Herman Koehler. The members meet in the shop of the Jenkintown grade school every Wednesday from 3:30 to 5:30 in the afternoon, and are making many kinds of articles including picture frames, chests and footstools. Heimtraut Dietrich is the student chairman of the group.

Lieutenant in WAVES



Miss Hilda Guenther

Six Receive Prize Awards On Honors Day

The new members of Lambda Delta Alpha were introduced, six girls received awards, and the names of those girls which composed the Distinguished Honor list were read at the Honors Day convocation held on Wednesday, October 28. Mrs. Jeannette Nichols, the guest speaker, spoke on "The Weapon of Understanding", and Miss Bertha Peirce, professor of classical languages, informed the assembly of the significance of Lambda Delta Alpha.

Four in Honor Society

The new members of Lambda Delta Alpha, the senior honor society, presented by Miss Mary Clarke, professor of history and chairman of the Honors and Graduate Scholarship committee, and recognized by Mrs. Bassett, an alumna member of the society, are Aune Allen '43, Mary Berlin '43, Cherry Magner '43, and Anne Ostrander '43.

Aune Allen '43 received the Marion V. Frank scholarship for residence at the French house for a year. Aune also received the Silver Trowel last June, for obtaining the highest grade-point ratio throughout her freshman, sophomore, and junior years.

HONORS DAY

(Continued on Page 4, Col. 1)

Beaver's Latest Theme; 'A Farming We Will Go'

Although some of the gals at Beaver college can explain Einstein's theory of relativity and can recite the Greek alphabet backwards, they evidently know nothing whatever about the gentle art of carrot picking.

Last Saturday morning 47 Beavers put their books back in the bookcase, skipped their classes, and donned the role of the farm-erette-for-a-day. For six long hours they played nursemaid to the carrot. The price—30 cents an hour!

Garbed in dungarees and those ever popular gay plaid shirts, they piled into the big open truck which the optimistic farmer sent for transportation. But the Beavers proved their spirit and worked like Trojans all day... (with at least an hour out for lunch). That Saturday saw more students at breakfast than a month of Saturdays. Oh yes, there were many

Beaver Places Twelve Girls In Who's Who

Only Seniors, Juniors Are Eligible For National Recognition

Twelve students from Beaver will appear in the Who's Who Among Students in American Colleges and Universities for 1942-43, with the addition of two seniors who were selected last year, as juniors. Character, leadership, scholarship, and potentialities of future usefulness to society are taken into consideration when the candidates are chosen. Only seniors and juniors are eligible, and are selected from a group of fifteen seniors, and ten juniors chosen by vote of their respective classes.

Two From Last Year Chosen

Paige Weaver and Betty Ann Kiehl are the girls who were chosen last year for inclusion in Who's Who. The eight seniors elected for the 1942-43 edition are Mary Berlin, Maryclaire Drexler, Camille Houck, Norma Hunter, Cherry Magner, Anne McLaren, Janet Stringfield, and Marjorie Williams. Four juniors were elected: Joan Carpenter, Edith Chubb, Virginia Gaskell, and Martha Troupe.

To Give National Recognition

Who's Who was started in order to recognize on a national scale those students who are outstanding in America's colleges and universities and to provide a reference book of information about American college students. In the 1941-42 edition biographies of 12 Beaver girls were included, 10 seniors and two juniors. This year Beaver is represented by 14 students.

New Procedure For Honor Council

An amendment to the constitution of the Honor council was passed at the monthly meeting of the Student Government association.

The new amendment will make it possible for a student or faculty member either to report an individual directly to Honor council or to ask the student to report herself and wait a week before reporting her. Previously only the second of these courses was open.

The senior hymn of the class of 1941 was voted the college hymn. After several of the students had sung the hymn, Dorothy Harris '44 made a motion that it be made the college hymn. The motion was carried by a large majority.

Marjorie Williams was sworn in to the office of secretary of the Student Government association by President Paige Weaver. Joyce Blodgett was sworn in as Grey Towers representative.

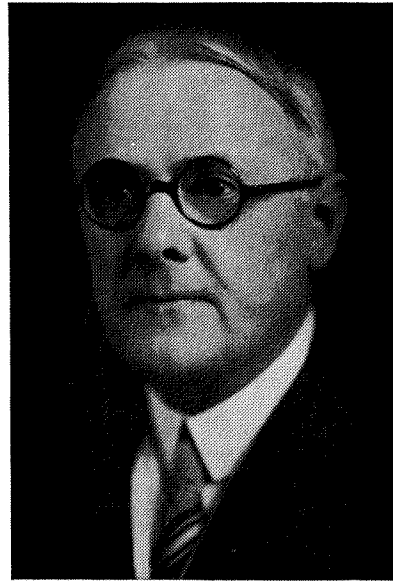
aching backs and legs that night, but amazingly few complaints.

Farming is just one phase of defense work directed by Mr. Thomas Barlow. At the present time Beaver girls are busy taking Nurses' Aide and First Aid courses. Others are selling war bonds and stamps in theatres every week. There are four girls who just received posts as hostesses at the Stage Door Canteen affording them the opportunity to entertain men in all branches of the service. Beaver also has representatives in Sears, Roebuck and Company and Gimbel Brothers in Philadelphia.

There is plenty for everyone to do. So why not start in by going farming next Saturday? Be sure and adhere to Miss Roberta Paulhamus' announcement that any student finding it necessary to cut her classes to go farming should make arrangements to speak to that teacher beforehand.

Trustees' Reception To Take Place Tonight

President of Trustees



Dr. Allan Sutherland

Theatre Group Will Perform Drama Of War

Because of an increasing demand for a timely and recent play, the Forum has chosen the recent Broadway success, "Letters to Lucerne." This production, the first one to be performed in the Philadelphia area, will be presented in the All Hallows Parish house, Wednesday night, November 18, at 8:15.

Miss Elder Director

Miss Judith Elder, assistant professor of speech and head of the drama group, is directing Fritz Rotter and Allen Vincent's war play. She has said that, due to its appropriate plot and background, the play has already been chosen as one of the season's productions throughout the nation's colleges, universities, and little theatres.

Scene in Switzerland

The play opens in a girls' boarding school in Lucerne, Switzerland, in August 1939, before the war breaks out. Among the group of girls are many conflicting nationalities—German, French, English, Polish, and American. This little group of girls under the supervision of a kindly and understanding headmistress have a custom whereby they gather together each night before retiring and read aloud their letters of the day. As the days grow closer to war and then finally the war comes, the reactions and feelings of the girls are changed and twisted.

Many Nationalities Represented

Virginia Gaskell '44 is portraying Erna, a German girl, who though her friends dislike her for her nationality, stands up for her conviction. Mona Solomon '45 will play Olga, the Polish girl, while Suzanne Sharnick '46 with a French accent will play Felice; the English part, Marion, will feature Jean Eggers '46; Gloria Schustek '46 and Madelyne Salzman '45 will be Sally and Bingo, typical American girls; Lillian Hunter '45 will be Polish for the evening in Margaretha's part; Frima Horwitch '46 will be the kindly head mistress Mrs. Hunter assisted by Marjorie Michel '45 as Miss Linder, a teacher. Geraldine Murkoff '45 as Gustave, the gardener; Ruth Martin '46 as Francois, the postman; and Shirley Thalberg as Koppler, the policeman, will complete the cast of "Letters to Lucerne".

Jenny Sachsel to Make Sets

Making the clocks tick backstage will be Jenny Sachsel '45 who is making the sets which Mr. Benton Spruance will design. Peggy Oliver '46 is stage manager.

Formal Dinner Will Be Held In Beaver Hall

Formal Dance to Follow First Reception of Year On Jenkintown Campus

The trustees of Beaver college will entertain the faculty, personnel, and students at their annual reception tonight in the Beaver hall drawing room. A formal dinner at 6:30 in the Beaver hall dining room will precede the reception. The receiving line will form at 7:30.

Reception in Jenkintown

The reception has been held at Grey Towers in previous years but because of the gas and tire shortage it was changed to the Jenkintown campus. After-dinner coffee will be served in the drawing room, and entertainment is being provided by the music department.

Dance to Follow

Huntingdon gymnasium will be the scene of the formal dance to follow. Students and their escorts may dance from 8 to 12. Girls attending the dance have been given one o'clock permission.

All resident students will dine at Beaver hall. The day students, faculty, and personnel are also invited.

Dr. Allan Sutherland, president of the board of trustees, Dr. and Mrs. Raymon Kistler, and Paige Weaver, president of the Student Government association, will head the receiving line.

Beaver Mothers Plan Meeting For November 10

Mrs. Jasem A. Aikens will speak to the Beaver College Mothers' association at their monthly meeting Tuesday night, November 10, in Beaver hall. She will address the group on "Opera".

Aside from being national chairman of the Scrapbook contest of the Federation of Music clubs, assistant treasurer of the La Scala Opera company, and adviser for the students of the Matinee Musicale club, Mrs. Aikens is also the director of the Victory Choir of the Philadelphia Music clubs. Mrs. James MacNutt, president of the Mothers' association, will preside.

As to the future programs of the group, Mrs. Nicholas Hunter, program chairman, has announced a Christmas party for the mothers and faculty to be held in Green Parlors. On January 30, a card party and fashion show will take place at Snellenburg's. The Beaver girls are urged to attend this meeting.

The purpose of the Mothers' association is to stimulate the interest of the students' mothers in Beaver college and to aid the girls in making their college days happy. The association also has patron mothers to give the freshmen the feeling that they have a friend as soon as they arrive at Beaver.

Assembly To Feature Miss Besse Howard

Miss Besse Howard will speak on world affairs and the present war situation in the weekly assembly, Wednesday, November 11.

Miss Howard is a radio commentator and was formerly on the staff of the League of Nations. This event is being sponsored by the world affairs committee of the Forum headed by Fannie Rockefeller.

BEAVER NEWS

Published weekly by members of the student body of Beaver College, Jenkintown, Pennsylvania

Subscription rate \$2.50; Mailed subscription, \$3.00

Editor-in-Chief	Jane MacFarland
Editorial Staff	
News Editor	Joan Hinlein
Feature Editor	Miriam Howard
Managing Editor	Betsy Owens
Drama Editor	Irene Golden
Sports Editor	Peggy Crosson
Art Editor	Dorothy Carlson
Exchange Editor	Janet Stringfield
Faculty Editor	Meta Riess
Alumnae Editor	Geraldine Murkoff
Business Staff	
Business Manager	June Corson
Assistant Business Manager	Ann Fields
Advertising Manager	Carolyn Cotter
Assistant Advertising Manager	Becky Crothers
Circulation Manager	Lorraine Stanley
Head Typist	Jean Grindrod
Photographer	Mildred Casals
Reporters	
Anne Flaherty, Joan Carpenter, Ann Fields, Peggy Oliver, Aurora Dolley, Winifred MacKay, Jane Figgatt.	
Advertising Staff	
Ann Cole, Arabell Garis, Emily Ann MacDonald, Twells Souden, Enid Frankel, Jean Smith.	
Typing Staff	
Doris Lantz, Ruth Troutman, Barbara Young, Elizabeth Smashey, Eleanor Felter.	
Faculty Adviser	Miss Belle Matheson

1942 MEMBER 1943

ASSOCIATED COLLEGIATE PRESS

Represented for National Advertising by National Advertising Service, Inc.

For Consideration . . .

Beaver heard its yearly revision of the well known but ne'er understood honor system on Wednesday. Confusion again reigned as it always does when a question is brought up of vital importance. Whatever may be the merits or demerits of the new amendment we will not attempt to discuss at the moment, but there are a few observations on the conduct of the meeting as a whole which should be made.

To begin with, a student government meeting is a democratic meeting. Ideally the student body governs itself. Therefore such a meeting should offer every girl, freshmen not excluded, the opportunity to speak her opinion and be heard by her fellow students. No matter how insignificant her words may seem, they are important because she thinks they are and has taken the trouble to offer them, rather than just sitting, as most of us do, and griping to herself. Who has the right to say, "I think it should be this way, so your ideas are no good!" Isn't that slightly reminiscent of the big boss in Europe?

Therefore we believe that problems should be thrashed out sanely and democratically and definite conclusions reached before any motion is passed. Then perhaps we would hear less talk about how things are "rushed through".

In the second place, courtesy should play an important part in such a meeting. A student not only has the right to speak her piece, but the student body owes her the courtesy of listening. 'Laughing girls down' has too long been a characteristic of Beaver meetings, and this very fact belies any claim we may have to courtesy. On the other hand, this might be avoided if girls would think out what they have to offer before attempting to offer it.

These points have been brought to your attention as suggestions by which further meetings may be more intelligently conducted and further issues may be more intelligently understood. That we profit by experience seems like a sound adage, but is it?

Toward Better Living

For relaxation, eating, smoking, and talking, we have the Chatterbox and lounge in Beaver hall. We Beavers enjoy these places, but do we enjoy them as much now as we did before? Can we relax or be proud to bring our friends into places as disgracefully untidy as these have been recently?

It is true that there are fewer girls working in the Chatterbox this year, but help is short in many jobs. With the response last Saturday we saw that Beaver girls are willing to help the farmer do his work. Why aren't we willing to help in the work of caring for our own school?

If everyone would take care to place her matches, cigarette butts, and paper in the containers provided, one-half of the job would be done. Perhaps a better plan can be worked out for the removal of dirty dishes or even a different arrangement at the windows for blackouts. The job at present, if everyone would like a cleaner, more cheerful Chatterbox and lounge, is cooperation in keeping them clean, and then we may have the right to ask for some effort toward further improvements.

Miriam Howard

A Challenge . . . To Those Worthy

A new day dawns and each young girl of the student body forms a tracery across the face of the hours. The sun sets and the stars come out and the day is finally done. But day after day, she adds to the design. After three years of swiftly passing days, we who have been watching these people, gather together and consider the things they have wrought. In many of the patterns we see high promise, but here and there, there is a careless stroke, here and there a harsh line, and now and again the lines are so light we can scarcely trace them. Sometimes they are broken and disconnected. Then sometimes—and now our eyes grow bright—we see designs of an unusually high order of skill, of significant meaning, indicative of distinguished qualities of mind and spirit.

To honor these young artists whose harmonious patterns have been deftly wrought across the hours, the Lambda Delta Alpha honorary society was born, which should exist to tell them and others that we delight in their traceries and trust them to do big things in the days to come.

The symbol of the society, the pin representing a lighted torch, is significant of our hopes and their obligation to bear before them a light which shall not fail.

What especially do we expect of them? A standardized taste, of course, so that in literature and life they shall instinctively differentiate between the noble and the mean. A zest for creative activity, of course, by which they shall add their bit to the sum total of arts and ideals of permanent value.

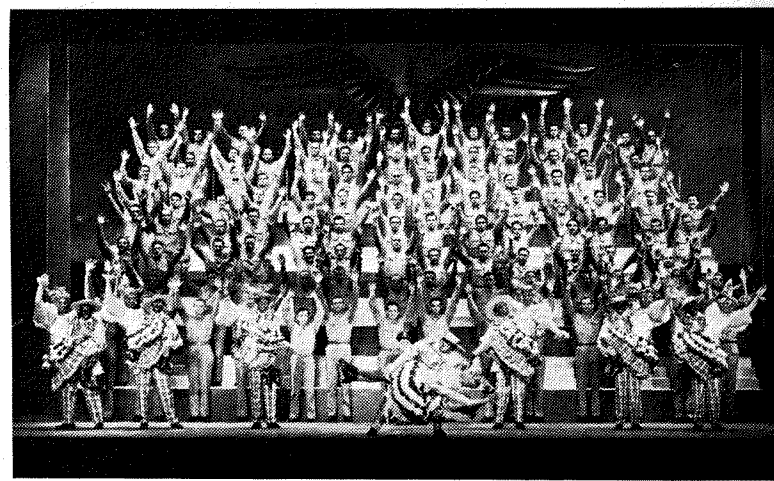
Then we shall look to them to keep an open mind and heart that through all their lives they may be on the alert to penetrate the density of narrowing prejudices and their attendant cruelties with the light of understanding love, one which shall readily embrace and accept on a parity the men and women and children of every color and race and nationality and creed, of every social order—rich and poor, cultured and untaught.

And finally, we add a special prayer for today, that they may be leaders during this era of world darkness and conflicting standards, in maintaining that high Lincolnian ideal of 'malice toward none, of charity for all, yet with firmness in the right as God gives us to see the right,' so that they shall be able to help the world to awaken to a bright new phase of real world democracy. We ask that they shall be full of resourcefulness along the lines of the education of the young of all nations and through processes of justice for all nations to discover a form of world security by methods which future generations shall judge both enlightened and Christian, that they shall tremble at the possibility of winning the peace over the foe, and yet of losing the peace in the sight of God.

This is what we trust that the years they have spent at Beaver in earnest study and quiet reflection shall have helped to make possible—years in which every lesson in science and vocational work shall have been dedicated to learning to lift the load of humanity, and every lesson in literature and art and history shall have been dedicated to a new understanding of the human heart. For after all, the only intellectuality worth achieving, the only torch worth bearing is that of a compassionate comprehension of our fellow travelers through life.

Bertha C. Peirce

Army Extravaganza . . .



'This Is The Army' Has Fun and Melody

If the armed forces of the United States are as successful as that contingent of them now working at the Mastbaum theatre in Philadelphia, we can look forward to a near and lasting peace. For there is the spirit, the originality, and the sense of fun which we think of as American, which we might as well admit that we think of as winning, in this play. Several hundred soldiers, privates, corporals, and sergeants, plus Mr. Irving Berlin, and an enthusiastic American public have managed to make "This Is the Army" one of the biggest hits that the theatre has seen. But it is for more than that that we liked it.

Though there was an urgency and a tenseness to those first few minutes when the curtain went up, those boys in khaki were out to give a first-class piece of entertainment, and there can be no doubt about it—they did.

Perhaps it's because this is wartime that we like it so, but seeing men in women's parts, watching actors really act, hearing songs that have a certain lilt and melody, and high-spirited male voices to back them up still give us a pleasant thrill.

Though "This is the Army" is essentially an all-soldier show which doesn't feature any special actors, nevertheless there were a few men who really merit special

recommendation. Private Julie Oshins is one of these.

In one of the truly comic scenes in this show, "The Army's Made a Man Out of Me", Sergeant Ezra Stone and Corporal Philip Truex speak with a slight swagger of how the army has made them men. Oshins, being neither a sergeant nor a corporal, isn't quite as sure that the army's made a man out of him, nor is the audience. After a great discussion between Stone and Truex (now both gentlemen because of the army) as to who will get a chair from the other end of the stage, "No, please let me get it, Ezra." "Why Phil, I wouldn't think of it.", they suddenly realize that Oshins is the private in the group. But the army's not "made a man" of him yet, and with the line which has since then become classic, in a manner that can be neither described nor reproduced, Oshins half belligerently half frightenedly answers, "Go ahead, break me, see if I care, break me to a civilian!"

But you don't think it's so funny, and yet the audience roared. And so the theatre is still the theatre, and you can't read it, you've got to see it. "This Is the Army" is a good show, but the spirit of the men who are in it and all that they represent make it a great show. See it and file complaints to page 2, column 3 if you don't agree.

Irene Golden

THE METRONOME . . .

Flashes from the musical front! . . . Aune Allen now has a permanent job and a very enjoyable one too. . . She is the junior soloist in the Messiah Lutheran church once a month. . . That's one way to keep in training, Aune.

It has been a long time since we have had a soloist in chapel on a week night, but recently Mrs. W. E. Sturgeon did us the honor . . .

On December 9, the choir has an engagement at Strawbridge and Clothier . . . By the way Dottie Carlson is the newly elected secretary of the choir . . . Nice going, Dottie.

Elly's done it again . . . She sang Sunday morning at Miss Bampton's church.

Lillian Hunter wishes to remind us of the program of music that has been planned for us during the forthcoming weeks . . . So any time you feel like relaxing, girls, just hop over to Dr. Roberts' study and listen to your hearts' content. Each week there are different selections of records on file for our enjoyment. Incidentally, any contributions will be gladly accepted.

"Wi' a Hundred Pipers", a Scottish air arranged by Geoffrey Shaw, is practically causing minor cases of hysterics in Tuesday night Glee club rehearsals . . . It must be the Scottish brogue, girls . . . The Glee club repertoire this year is one of the best yet . . . The ever popular "O Morn of Beauty", a chorale from "Finlandia" by Jean Sibelius, is a sample of what the club has in store for us . . . But the one selection which received the warmest reception on the part of the Glee club members was "Nightingale" written by our own musical director, Mr. W. Lawrence Curry . . . The girls really put their hearts into singing it . . . Well that's all for now . . . Tick, tick, tick.

JUST LOOKING, THANKS . . .

Well chilluns—here we are back again, and this time, while waiting for our own bond drive to get under way, we managed to pick up an idea from Elmira college. They have inaugurated a baby bond drive for the student body and have planned to solicit every member of the student body and the faculty, asking them to pledge "two baby cokes for a baby bond". The sum of the individual dime contributions will be used to buy a bond made out to the college. The aim of the drive is to purchase at least one such bond every week. How about such a drive at Beaver?

Note to Norma Hunter—The yearbook of Mount Holyoke is sponsoring a dance to earn money, and the profits from the dance will help pay for the cost of the yearbook which is estimated to be about \$4,300 this year.

From the "Mount Holyoke News" too:

"She walks with a decided jerk."
"Yes, isn't he?"

Only 75 percent of the students taking gym at Lafayette this year have received injuries of some sort. (We thought this was a he-man institution). To inspire the would-be Spartan warriors, a high wooden horse has been built among other obstacles on the course. The never-say-die attitude of these junior commandos is brilliantly exhibited on, over, and along the sides of the scaling wall. This, no doubt, is how they make men!

Campus radio station WHAV of Haverford is ready to go on the air according to the "Haverford News". Questionnaires are being distributed to students to find out which programs are most popular.

FOR VICTORY



BUY UNITED STATES WAR BONDS AND STAMPS

Peter's Patter



DC

This is me, Peter, patterning in a most proud and paternal way, 'cause I've just been told that I'm a father! The little monk was introduced to me at the Beaver-Temple game, and is officially known as Pete, Junior. (Pulleez don't call him Junior!) His god-mother is June Pizor, a former cheerleader at Beaver, and she has entrusted his care to Janet Green, captain of the cheerleaders. Those women don't think I'm capable of taking care of my son. Well, I don't mind if they see that he washes his face and says his prayers, but I'm going to be the one to see that he learns to cheer the Beaver gals on in all their athletic activities.

Though the Beaver gals failed to earn a victory at their first hockey game, their spirit and that of the whole student body deserve much praise. The initial game of the season is always a hard one. The four freshmen players, Dot Germain, Dot Moffett, Eleanor Pepper, and Jane Scott, were especially outstanding. Scottie and Pep, playing left and right insides, did some beautiful passing, and we'd like to see a lot more of it in the rest of the games. We are still aghast at Duffy's beautiful stick work and her fine defensive play at left-half-back. And we dread to think what the score might have been if left fullback Germain hadn't made so many long, hard drives into the clear.

Now that the girls have found out where they are weak, we feel certain that they will show a strong and united team in the rest of their games. Let's not place the responsibility of a victory on the eleven players, but on 485 girls. Here is the complete schedule, just so you won't forget.

- November 6 Ursinus Home
- November 11 Penn Home
- November 18 Swarthmore Away

Did you know that varsity rifle practice has begun? Yes, the girls have been shooting some mighty fine targets down in the rifle range, in preparation for a record-breaking season. Mary Berlin captains the group this year, and manager Christine Tomlinson is taking care of the details.

In case some of you don't know this sad item of news, I must tell you that there will be no intramural riflery this year because of the shortage of ammunition. As yet, it has not been decided whether the annual Father-Daughter rifle match will be held. There are the problems of ammunition and transportation to be faced in this question.

And how many of you know about the "100" club? Membership in this group is exclusively limited to those girls who shoot a perfect target or 100. The newest members are Winifred MacKay and Ann Fields.

Other girls in the college who have attained this honor are Mary Berlin, Marjorie Burg, Phebe Carpenter, Gail Close, June Corson, Ardala Cozine, Janet Green, Miriam Howard, Betty Kidd, and Sylvia Wells.

The first game of the intramural hockey season was played last Thursday when two of the freshman gym classes engaged in a closely contested match. Neither the 9:30 nor the 11:40 class could muster eleven players (tsk! tsk!) so upper classmen filled some of the vacant positions. The final score showed the 11:40 class the victors by the score of 2-1.

We must stop telling you about sports now, and hurry out to the hockey field to cheer Beaver on in their second hockey game. We'll be looking for all of you.

Love and 'tisses,
Pete and Re-pete.

Hockey Girls Win Honors

Weaver, Brewster, Harris Win Berths On All-College Team

Paige Weaver, Beaver college hockey captain, Grace Brewster, and Dorothy Harris were awarded first team berths on the All-College hockey team, chosen at Bryn Mawr last Saturday. Betty Ann Kiehl was selected for the reserves, giving Beaver a total representation of four girls. The first and second teams and reserves were selected from teams representing Beaver, Bryn Mawr, Drexel, Misericordia, Penn, Temple, Rosemont, Swarthmore, and Ursinus.

The All-College team is made up of the best college players in the Middle Atlantic district. This tournament was first held at Swarthmore two years ago. It was also held there last year, but was transferred to the Bryn Mawr campus this year. In the morning, each college team opposed three different teams for twenty-minute scrimmages. Following this the judges selected the outstanding players from each school for further try-outs. The girls then went to the gym for luncheon while the judges retired to make their final decision, which was announced after lunch.

Temple's undefeated hockey team rightly earned five places on the first team. Beaver was next with three, followed by two for Bryn Mawr and one for Swarthmore. On the second team, Penn and Ursinus tied with three places, Swarthmore and Bryn Mawr each earned two, and Temple placed one. Swarthmore and Ursinus each placed two girls on the reserves, and Penn and Beaver each placed one. Later in the season the two teams will oppose each other, and will probably play the first and second All-Philadelphia teams.

All four of Beaver's representatives have been selected for one of the teams in former years. Paige and Betty Ann were awarded first team positions in 1940. Grace made the reserves last year. Dot has placed for three years, beginning on the reserves, climbing up to the second team last year and finally achieving first team this year.

Facts And Figures On Intramurals

Here are the facts and figures concerning intramural activities. Intramural hockey has a total attendance of 31 out of approximately 485 students. The freshmen are leading the representation in this sport with 21 girls, but in proportion to the size of their class, their attendance is not much better than the sophomore total of seven. Only one junior and two seniors have been out.

Twelve girls have appeared for archery, five freshmen, four sophomores, three juniors, and no seniors. Swimming has been the most popular intramural sport. The grand attendance total reaches 47, 33 of whom are freshmen. The sophomores and juniors have had six girls each out, and the seniors, two.

Conditioning for Victory . . .



Betty Ann Kiehl, Mary Lou McGrath, Cam Houck.

Hockey Team Loses Opener To Temple

Exhibiting a pass formation that really clicked, Temple helped Beaver open its 1942 hockey season on Wednesday, October 28, by trouncing a fighting scarlet and gray team that only got started in the second half, by a score of 5-1 on Beaver's home field.

Temple Superior From Start

Temple's offensive power, backed up by consistent backfield play, was evident from the opening whistle. Their stickwork, particularly noticeable in their passes, left no doubt as to their ability, but the Beaver lassies were by no means willing to hand over the contest to Temple. They made a very close game of it until the middle part of the first half when the Owlettes started to roll and racked up four goals in almost as many minutes on shots by Betty Brown, speedy center forward, and Anne McConaghie, versatile left inner. Beaver's backfield, however, soon tightened up and did not allow another ball to enter the cage during that half.

Beaver Scores in Second Half

At first, the play in the second half seemed but a continuation of that in the first as Anne McConaghie slammed another marker into the cage. This time, however, an aroused Beaver eleven took the ball up the field and scored on a swift goal by Eleanor Pepper, freshman left inner. Although both teams continued to threaten until the very end, neither forward line was able to penetrate into enemy territory. Despite the fact that Beaver lost its first contest to one of the finest elevens in the country this year, promising results can be expected in the future from a team that is giving all it has.

First team line-up:

- Right wing Kiehl
- Right inner Scott
- Center forward Brewster
- Left inner Pepper
- Left wing Weaver
- Right half Corson
- Center half Hopkinson
- Left half Moffet
- Right fullback Harris
- Left fullback Germain
- Goalie Crosson

Second Team Wins

Undismayed by the varsity's showing, the scarlet and gray's second team came from behind to defeat Temple's second team by a 4-3 score.

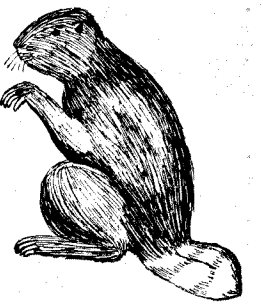
The Beaver girls showed their superiority when they overcame a two-goal lead in the second half by scoring three goals almost in succession to take a lead they never relinquished.

Second team line-up:

- Right wing Gold
- Right inner Redding
- Center forward Gibb
- Left inner Mueller
- Left wing Young
- Right half Whitestone
- Center half Comly
- Left half Blodgett
- Right forward Heyl
- Left forward Houck

Substitutions: McGrath, Felter.

The Beaver's Tale



Grouch column—never saw anything like it in this school . . . we can go along our merry way for weeks with hardly a thing to mar our happy-go-lucky life, and all of a sudden—bang! —we're besieged all at once . . . art papers, English papers, history exams, economics exams, psychology exams . . . egad, what a life . . . so we slave away for a while and then finally a little peace and we're too worn out to enjoy it (much!) . . .

Gals in this college never stop doing things — always gallivanting here, there or the other place . . .

Last week the concert goers included Rita Baumann, Cissie Bornstein, Vassar Constantine, Bebe Smashey, Bea Goldblatt, Ginny Root, Mary Jane Sones, and innumerable others . . . a cultured lot are we . . . at any rate we try hard and, being who we are, succeed . . .

Ruthie Charlton gave us all a lift by sharing Rich with us one day . . . he is her sailor boy and a right sharp one too . . .

Danny gave Jean Werner a beautiful friendship ring . . .

Ginny Millward's Bob left for the army yesterday . . . More misery!!!

Mary "Eye-mo-geen" Berlin, Anne McLaren, Ginnie Shirley, and Bette Diamant took in "Lady in The Dark" and then to Bette's . . .

In to Penn . . . (again?) . . . Mim Gardner, Gerrie Murkoff, Rita Bow-wow, Margie Friedmann, and Margie Burg with "Big Fred" Rose (always knew there was nothing small about Margie) . . .

Mary Gormley and Gloria Schustek stopped off at Yale . . .

There was a hayride last Saturday night — and a full moon too — but sad, no men!

High finances . . . one of Paige's Jenkintown students requested a loan of 20 cents the other day . . .

Speaking of Jenkintown, we happened into their football game two weeks ago and were astounded to hear one of Lansdale's band members blowing like a second Harry James . . .

Old home week — Mary Jane

Pep Squad To Conduct Rally

A huge pep rally to be held outdoors before the final hockey game with Swarthmore on November 18 is being planned by the cheerleaders. The girls will 'tag' the students for one cent and use the money to buy marshmallows. These will be toasted at the rally over a huge bonfire. There will be songs and cheers, and the rally will wind up with a snake dance. Swarthmore is the traditional hockey rival of Beaver, and Janet has said that the cheerleaders are going to show the team how much the students want a victory.

Scarlet sweaters and gray skirts identify Beaver's cheerleading squad of eight girls at every hockey game. Captained by Janet Green '44, the members are Eleanor Gotti '46, Nancy Gubb '46, Lois Hinlein '45, Shirley Ketcham '46, Jean McCarthy '46, Helen Murtha '46, and Eleanor Steele '46.

Besides learning how to lead the old songs and cheers, the squad has been making up several new ones. Two of the new cheers are: "Yeah scarlet . . . Yeah gray Come on Beaver Win Today!"

"Come on, Beaver Hit that line Come on, team It's time to shine."

To overcome the difficulty of scattered cheering the squad is trying to get permission to bring out some of the bleachers for hockey games. In this way the spectators could sit together to cheer under the guidance of the cheerleaders.

Stevens and Bobbie Sue Lawrence (without pal Jane if you please) paid us a visit. And a lot of the alumnae were around too— B. A. Searle and Eddie Cheyney made things a bit lively in the Chat-terbox one night . . . Stewie and Jean Potter descended for a week-end.

Off Again . . . Sisi Kaufman to New York with new flame Jack . . .

Marian Sonntag home again . . . Eleanor Heath to Rutgers . . .

Cam Houck to Jeff Med . . . (and cheese sandwiches 10 cents Sunday and Tuesday nights with B. A. Kiehl— whew, what a plug!!!) . . .

Flash . . . Betty Watson engaged to Knobby and sporting a lovely ring . . . Maggie Sala getting lots and lots of flowers on her anniversary; been going with Jimmy four years now.

Spooks 'an Stuff . . . Did you know that Mr. Harrison's ghost still walks the Towers halls? Pleasant dreams . . . hmm??

And there was a telegram sent last week to one of the gals— addressed to The Gay Towers — sounds like the best night club in town!!

Well kids, don't know whether we'll hit the dance tonight or not. What with the shortage of civilians, we're awaiting the arrival of the coast guard.

'Nuf said— so long
The Beaver

Faculty Notes

Muhlenberg Memorial Lutheran church, at 13th and Ruscomb Streets, Philadelphia, of which Dr. Charles Dapp of the Beaver faculty is pastor, will celebrate Sunday morning, November 8, at 11 o'clock, the 200th anniversary of the arrival in this country of Henry Melchoir Muhlenberg, the organizer of the Lutheran church in America.

Dr. Dapp cordially invites the faculty and student body to this special service. The speaker for the occasion will be the Reverend A. R. Wentz, president of Gettysburg Theological Seminary.

Miss Doris Fenton spoke at a meeting of the Furness Shakespeare club on Friday, October 23. The subject of Miss Fenton's talk was "Improving Shakespeare". She gave an account of the adaptations of Shakespeare from the 17th century to the present day, including the latest movies based on Shakespeare's plays.

Beaver's faculty as well as students are giving full cooperation in the war effort. Miss Mary C. Brill, Miss Esther Metzenthin, and Madame Suzanne B. Neves worked as Nurse's Aides in the recent blood donation campaign, and other members of our faculty were among the blood donors.

We regret to report that Mrs. Thomas Haste, manager of the book store, has resigned. Mrs. Haste said that she has enjoyed the years she has worked as manager of the store and that she will be back from time to time to see the girls; she is going to miss them very much. The girls are going to miss Mrs. Haste, too.

Since November 1, the book store has been handled through the business office with Miss Florence M. Smith, former manager of the post office and cashier, in charge. Miss Helen Nemes is now in charge of the post office.

Miss Helen T. Gilroy, professor of physics, recently attended a conference of college physics teachers at State College, Pennsylvania. High school as well as college physics teachers were invited to discuss the problems physics teachers have to deal with today.

'Beaver I Will' Has Successful First Year

Approximately \$100,000 has been subscribed by faculty, students, alumnae, and friends to the Beaver College Development Program since it was launched in 1941. In less than a year these voluntary subscriptions have given Beaver a definite opportunity to secure advanced accrediting.

So far, 647 alumnae have given amounts varying from \$5 to \$1,000. In addition to pledging money, many students bought war bonds and turned them over to the Development Program, thus serving the two-fold purpose of complying with the government's plea to buy bonds and also helping the college.

At the drive which will be held again this year, freshmen who feel they would like to have a part in the Beaver Development Program will be able to contribute as they wish.

Student Observers Visit Local Schools

Under the supervision of Miss Katherine Stains, associate professor of education, freshmen who are majoring in early childhood education have been observing in nearby schools.

The future teachers of the 1946 class observed the kindergarten and first grades last week and the third grade this week. They are making this study in various schools in the surrounding sections. "This is to give the new students an opportunity to see the different kinds of school equipment, the physical environment, and to study the home background of the children," Miss Stains stated.

HONORS DAY

(Continued from Page 1, Col. 2)

The President's Prize, given to the student with the highest grade-point ratio during her freshman and sophomore years, was awarded to Martha Troupe '44. Jean Kilpatrick '45, received the Dean's Prize given to the student with the highest grade-point ratio for the freshman year.

Cherry Magner '43 was presented by Mrs. Lillian S. Bassett, instructor in chemistry, with the language award in memory of Mrs. Marion V. Frank. Mrs. Bassett also presented the C. Mace Thomas award for chemistry to Muriel Lair '44. Edith Chubb '44 received the Malin Memorial Prize, a key given by the chemistry department, and will have her name placed on a plaque in the lecture room of that department.

The purpose of Lambda Delta Alpha, Miss Peirce explained, is to honor those seniors who have been outstanding in their scholarship at Beaver.

Announcement was made of the Distinguished Honor group for last year. For a girl's name to be placed on the Distinguished Honor list she must have been on the Dean's Honor list both first and second semester. Those names appearing on the Distinguished list for 1941-1942 are as follows: seniors, Aune Allen, Jean Grindrod, Gloria Marcus, Jean Nestor, Anne Ostrander, Helen Siotka, and Mary Elizabeth Watson; juniors, Joan Carpenter, Virginia Fesmire, Pearl Mann, Dorothy Morin, and Martha Troupe; sophomore, Jean Kilpatrick.

Freshman Halloween Frolic Leaders . . .



Twells Souden, Anne Cole, Kitty Osler, Anne Gorman, Jane Whitbeck, Jean Smith.

Y. W. C. A. International Day Set For Students

Are you one of the fortunate 250 who has become an active member of the Y. W. C. A.? If so, then you know of the many activities that you will be privileged to participate in. The Servicemen's Dance is coming soon, bandage rolling will get underway shortly, canteens are to be made for men in service and Thanksgiving baskets and Christmas packages have to be prepared. Greater activity and participation will be emphasized by the Y this year.

The annual Y. W. C. A. membership drive was held from October 15 to 17. Of the 250 active members, 102 signed for bandage rolling. Selling bonds and stamps, 102; Children's Christmas party, 96; Settlement house, 88; leading chapel, 10; Saturday entertainment, 34; U. S. O. work, 182. Faculty results have yet to come in.

One of the most timely units of Y activity is the defense program. Defense stamps went on sale in Beaver hall lobby on Wednesday, October 28, from 1:30 until 5:00. Considering the competition given by the Student Government dues, the results of the first afternoon of sales amounted to \$8.00 Tuesday and Wednesday of every week will be set aside for this activity, aided by those girls who signed for this work.

Definite plans are in progress for the Servicemen's Dance to be held on Saturday evening, November 21. Service men are being contacted through the Hospitality Center in Philadelphia. Membership in the Y and a small charge for transporting the service men to and from Philadelphia are the only requirements.

Congratulations to Dean Higgins and Anne McLaren, who are members of the Resident Committee of the National Board of Young Women's Christian Association of the United States of America and the National Inter-Collegiate Christian Council Administrative Committee. Both organizations meet once a month at the National Office in New York city. Beaver is the only college to have two representatives. Elections were held during the summer by the N. I. C. C. executive committee which met in Illinois.

HI-WAY THEATRE
Jenkintown, Pennsylvania
Sun., Mon., Tues., Nov. 8-9-10
Greer Garson - Walter Pidgeon
"MRS. MINIVER"

Order personalized Christmas Cards now—large assortment 50 for \$1.00 and up.
Sharpless Stationery Service
727 West Ave., Jenkintown, Pa.

Interior Decorating Hints at
Kirkland Hardware Store
Times Square, Glenside, Pa.
Ogontz 3515

International Students' day will be observed on November 17 in colleges and universities throughout the world. The purpose of the day is to commemorate the closing of the Czech universities and the brutal murder of over 160 Czech students by the Nazis in Prague on November 17, 1939. At the same time observance of International Students Day will manifest the determination of the free students of the world to fight through to victory.

United States colleges are planning convocations, chapel services, and general meetings which will be addressed by educators, scholars-in-exile, and students. A two-minute period of silence at 11:00 a.m. will honor those who have lost their lives in the struggle for democracy.

Radio broadcasts are being scheduled in England which will be carried to the United States by one of the major broadcasting systems. Many college and local stations will have broadcasts prepared by groups of students.

Many organizations are cooperating in planning the day. The Office of War Information has promised that reports of American observances will be broadcast by short-wave to all occupied countries.

COLLEGE CALENDAR

- Nov. 6—3:30 p. m. hockey game, Beaver vs. Ursinus at home. 6:30 p. m. Formal dinner and Trustees' reception.
- Nov. 7—Land Army does farm work.
- Nov. 10 — Mothers' Association Meeting—speech on "Opera" — students invited.
- Nov. 11—Miss Besse Howard speaks in assembly on war situation. 3:30 p. m. Hockey game, Beaver vs. Penn at home.

F. W. WOOLWORTH
JENKINTOWN
"We can supply your school needs"

Ogontz 6494 Open Eve.
Dresses - Sportswear
H. A. ROBERTSON
115 South Easton Road

MONTGOMERY, Inc.
Apparel of Quality for Men & Women
JENKINTOWN

CASA CONTI
Famous for Fine Foods
Easton Road & Jenkintown Road
Glenside, Pennsylvania

Rehearsal For Song Contest Starts All Beavers Singing

Who's going to win Song Contest? This is the popular question once more at Beaver. Seniors, juniors, sophomores, and freshmen are all busy practicing their songs while anticipating the night of Tuesday, November 24.

Last year the class of 1944 were the winners, so now as juniors they are trying to uphold their victory. The seniors are also very determined to win and upset their rivals, the other three classes. This year's sophomore and freshman classes have entered into the spirit of the coming occasion and promise to provide plenty of competition for the upperclassmen.

Camille Houck will lead the seniors for the fourth year. Dorothy Harris will be the juniors' leader for the second time. The sophomores will be headed by Carolyn

Maslow, and Dorothy Germain will lead the freshmen.

Judging will be based on the words, the music, and the performance of the songs which will include a marching song, an alma mater, a pep song, and a class song; and the appearance of each class, including costumes, entrances, and exits. The classes always wear their class colors which are for the seniors, red and blue; the juniors, blue and gray; the sophomores, yellow and gray; and the traditional green and white for the freshmen. The freshmen also wear their green caps, and are allowed to throw them away at this time if the upperclassmen approve.

Although the contest will be held in Huntingdon gym instead of Murphy this year, it promises to be as much fun as ever before. The winning class will be able to ring the chapel bell without waiting for the buses to bring the girls from the other campus, and members of the class will also drink a toast of "coke" from the silver loving cup as is the custom.

Alumnae Notes

The wedding bells and the wedding march seem to be predominant in the lives of many of our alumnae. Take Helen Kranzley '42, for instance. She is now the wife of Lieutenant Philip J. Welch. And Audrey Spielman, ex '43, is currently known as Mrs. Martin Drucker. Jean Wallace '41 is not only assistant to the director of employee activities at the Curtiss-Wright corporation, but is also Mrs. Robert M. Yahres.

When Margaret Grace Young, ex '44, was married to Harry Cochran, Jr., Gail and Margaret Close were bridesmaids, and Eleanor Snyder sang. Virginia Weaver '41 was married to Lieutenant William T. Bostock, Jr. in Reno, of all places! And Ella Baker '42 has taken the vows with Mr. Albert L. Strassburger.

But did you know— That Dot Bischoff '39 is a dietitian in the Army medical center at Walter Reed hospital? "I love it here in Washington," says Dot. —That Patricia Slotter '40 has completed her M. S. degree at the U. of P. and finished with a complete record of A? Pat not only teaches in the high school at Atlantic Highlands, New Jersey, but is also dean of girls there.

Joan Thurin '41 is working in Buffalo, New York, for the Liberty Mutual Insurance Co. and is doing all the claim adjusting which includes workmen's compensation and public liability for three large department stores? "I am my own boss," writes Joan, "and the fascination of the work lies chiefly in the fact that I have almost an excess of free time."

Marion Shultz '40, who is at Columbia now, claims that some of

KESWICK Starts Fri., Nov. 6
Glenn Miller "ORCHESTRA and his WIVES" band

Ogontz 599
Rydell Hosiery Shoppe
Lingerie and Novelties
713 West Avenue, Jenkintown

See **BETSEY WHITSTONE**—Beaver 337
for your latest recordings from **M. E. ALKUS**

Ogontz 1658 Call and Deliver
MAX KARP
CLEANER and DYER
120 S. Easton Rd., Glenside, Pa.

Woman's Exchange Tea Room
429 Johnson Avenue
Jenkintown, Pa.
Daily Luncheon 11:30 to 2
Evening Dinner 5 to 7:30

Livingston 2395
WISER'S
Tailoring and Dressmaking
6198 LIMEKILN PIKE

Starts Friday, November 6th
Barbara Stanwyck
Geraldine Fitzgerald
"THE GAY SISTERS"
YORKTOWN THEATRE
Elkins Park, Pa.

Open Every Evening 7:00 - 9:00
Victory Dress Shop
W. H. Howard
14 E. Mt. Carmel Avenue
Glenside, Pa.

RONNIE'S
5 - 10 - 25c STORES
Open Evenings
108 S. Easton Road
Glenside, Penna.

KOENIG'S
Drug Store
Glenside, Pa.

Greetings
BEAVER COLLEGE GIRLS . . .
A cordial welcome always awaits you at
THE WARBURTON HOTEL
20th & Sansom Streets
Philadelphia, Pa.

BLAETZ BROTHERS
Incorporated
Printers and Publishers
Printers of
BEAVER NEWS
JARRETT & ROCKLEDGE AVES.
Fox Chase, Phila.