

Have a
great
Semester!

The Tower

The Beaver College Student Newspaper
Volume XVI Number 1
August 27, 1999

A Welcome from the President



Bette E. Landman, President

Dear New Students,

Welcome to the world of Beaver College and the world that we will teach you.

The flags on our walkways represent the eleven countries where Beaver offers opportunities for you to study abroad. These flags, however, are but one symbol of Beaver's commitment to "teach the world." What happens to you and around you should, on a daily basis on campus, reinforce and make our dedication to a global perspective real for you. For most of you who are freshmen, you will begin by an examination of justice as it is seen in other traditions, and, next semester, you will have a chance to try your wings in

another country when you accompany your class to London over spring break. Whether freshman or transfer, however, Beaver will do all it can to broaden your horizons. In classes, in the dining hall, on the walkways, you will be able to meet students from more than 25 nations. Next semester, you will be able to talk with approximately fifty returning Beaver students who will have been studying in Beaver's programs as well as in other countries, including Korea, where Ewha Women's University is hosting our first exchange student.

Of course, another window on the world is at your desktop, as the Internet brings you access to an unprecedented scope of information. Increasingly, you will find your courses using the Internet and multimedia technologies to help improve your learning. By the fall of your sophomore year, our new instructional building will provide classrooms capable of using the latest instructional technologies.

Other changes on campus

will, I know, amaze returning students. In particular, I refer to the new athletic fields and tennis courts, as well as a new parking lot that will provide 170+ new spaces. We have taken a major leap forward in our ultimate goal of providing room on campus for our sports teams. I hope you all will take advantage of this new and far easier way to support your colleagues by watching their contests in the beautiful new setting we have created up on the hill.

Beaver College is clearly on the move. We are extremely pleased that you will be joining us in the unfolding changes dedicated to making your educational, personal, and social life on our campus one of continuous growth and improvement. We look forward to your engagement in the student governance process so that we can have your voice as part of our effort to make Beaver a college that is ever more responsive to its students' needs.

Bette E. Landman
President

A Welcome from the Dean



Jan Walbert, Dean of Students

Dear New Students,

We are so excited that you are finally here. It feels as though we have been waiting a long time, yet, at the same time, summer has flown by. The preparation for the arrival of new students is second to none when we think about preparations we make for coming to our home; however, you are no longer guests. We hope that his campus will become a home.

Each of the students, staff, and faculty who have contributed to your orientation for fall semester know how important the first few minutes, hours, days and weeks will be for your adjustment to the campus. While we will continue to work very hard to welcome you and to assist with your acclimation to campus, we hope you soon will become involved yourself.

Beaver College has a very strong community. We hope you will be an active member. This means that you respect yourself, others, and the environment that we live in, that you willingly present your ideas in a positive way, and that you listen to the thoughts of others, even if they are different from your own. We can be strengthened by understanding—and respecting—individuals who are different than

ourselves, and in fact we can learn from them.

This is a very exciting time for you and for the entire Beaver College community. I hope you will make the most of the opportunities afforded to you here. Although many individuals and groups are here to help you, **your** success depends primarily on **you**...what **you** do, how **you** respond to success and challenge, and **your** effort to enhance the learning community you have now joined.

The following are several basic keys to success at Beaver College. I hope you will find them valuable.

Find out what is going on...don't wait for someone to tell you or invite you.

Participate in something... volunteer, join an organization, attend events.

Get to know people: students, faculty, staff, even the Deans and President.

Make good decisions...be sure you have enough information, and make reasoned and informed decisions.

Look out for others; contribute positively to their lives.

Don't dwell on mistakes; learn from them and move on.

Stretch yourself. This is a time to learn.

Begin the Adventure! Get involved, connected and ready to go. We are thrilled you have joined the Beaver College community. We hope you will enjoy our campus and make it your own!

Sincerely,
Jan Walbert
Dean of Students

Greetings From the Student Government Organization

Fellow Beaver College Students,

The Student Government Organization Officers for the 1999-2000 academic year hope

your summer has been relaxing and enjoyable. We would like to extend a warm welcome back to campus and we hope that you are settling in okay. The other officers and I are looking forward to another fulfilling year. We are also very excited about the new changes on campus such as the new parking spaces located behind Boyer Hall, the courtyard outside Murphy Hall, and the garden located next to the Dining Complex.

The other officers and I have just returned from the Student Government Conference in Arizona. We were able to learn a lot of fresh new ideas that we hope to incorporate into our organization. We also plan to continue our commitment to community service as evidenced by past participation in the Philadelphia AIDS Walk, the Empty Bowl Dinner, and hosting an Easter egg hunt for

children from our surrounding community. We encourage all students to become involved in campus life either as a senator or a member of other clubs and organization.

Most importantly, we hope you, as a Beaver College student, will find SGO an effective and reliable avenue to voice the concerns of our student body. We encourage you to stop in, visit, and voice your concerns through our organization's network. SGO encompasses all facets of the College community, so we appreciate your willingness to make a difference and urge you to help strengthen our voice on campus.

If you are interested in becoming a senator for the Student Government Organization, you may pick up a petition in the Student Affairs office located in Knight Hall or in the Student Activities office located in the basement of Dilworth Hall. Petitions will also be available at the Activities Fair on September 8, 1999 from 5-7 p.m. on our Alumni Walk of Pride. We

look forward to hearing from you and if you have any questions or concerns, please feel free to contact us in the SGO office in the Student Activities wing of Dilworth Hall or call (215) 572-2193.

Sincerely,
Deborah Urban
President of the Student Government Organization

Public Safety: Greetings and Tips

I hope you all had a wonderful summer. I want to welcome you from the members of the Public Safety Department. We are looking forward to another fruitful and enjoyable year at Beaver.

The following are just a few details I'd like to mention as we begin:

****Your safety and the safety of all members of the Beaver Community is a cooperative effort. We all need to help each other. If you should see anything suspicious please**

give us a call at ext. **2999**.

****Please put an identifier on your books, disks, coats, etc. When we find an item our goal is to return it as quickly as possible.**

****Please lock your doors when not in your room.**

****Please do not leave anything of value in open view in your parked vehicles.**

Public Safety continued on page 3

INSIDE

Q&A	3
Calendar of Events	3
PRIDE	2
Kuch Center info.	3
Orientation Leaders	4-5
Work Study	7
Student Activities and Organizations	2

Student Activities/ Student Programming Board
Fall Events 1999

September

- 1 Fall Kick-Off with Russ Merlin, 8 p.m., The Chat
- 3 Film: *Grease*, 8 p.m., Stiteler Auditorium
- 4 Film: *Grease*, 8 p.m., Stiteler Auditorium
- 8 Activities Fair, 5-7 p.m. Inner walk (The Chat if rain)
- 10 The Great College Drive-In Movie: *The Matrix*, 9p.m., Behind Murphy Hall
- 11 Welcome Back Dance Party with "Hoosier Daddy," 10p.m. - 1 a.m., the Chat
- 17 Common Ground Cafe featuring Lexlee Petersell, 8 p.m., The Chat
- 17 Film: *The General's Daughter*, 10 p.m., Stiteler Auditorium
- 18 Film: *The General's Daughter*, 8 p.m., Stiteler Auditorium
- 19 Film: *The General's Daughter*, 6 p.m., Stiteler Auditorium
- 24 Comedy Club featuring Dwayne Perkins, 8 p.m., The Chat
- 24 Film: *Notting Hill*, 10 p.m., Stiteler Auditorium
- 25 Film: *Notting Hill*, 8 p.m., Stiteler Auditorium
- 26 Film: *Notting Hill*, 6 p.m., Stiteler Auditorium

October

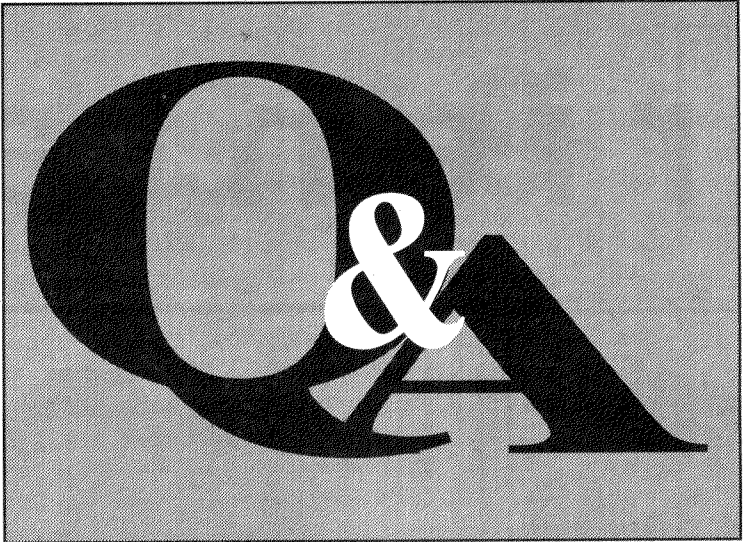
- 1 Common Ground Cafe featuring Howie Day, 8 p.m., The Chat
- 8 Mentalist Craig Karges, 9 p.m., Stiteler Auditorium
- 9 Common Ground Cafe featuring Teresa, 8 p.m., The Chat
- 16 Mr. Beaver Contest with M.C. comedian Frank Caliendo, 8 p.m., Kuch Center
- 16 DJ Dance, 10 p.m. - 2 a.m., Dining Hall (upper level)
- 22 Film: *The Blair Witch Project*, 8 p.m., Stiteler Auditorium
- 23 Film: *The Blair Witch Project*, 8 p.m., Stiteler Auditorium
- 24 Film: *The Blair Witch Project*, 6 p.m., Stiteler Auditorium
- 29 Peter Jordan: "GHOST!", 8 p.m., Stiteler Auditorium (Admissions is free for Beaver students with ID, \$5 for general admission. Tickets are required for both and will be available beginning 10/18 in Student Activities.)
- 30 RHC Masquerade Dance, 9 p.m. - 1 a.m., The Chat

November

- 5 Film: *Wild, Wild West*, 8 p.m., Stiteler Auditorium
- 6 Film: *Wild, Wild West*, 8 p.m., Stiteler Auditorium
- 6 SAA Turning Point Coffee House, 8 p.m., The Chat
- 7 Film: *Wild, Wild West*, 6 p.m., Stiteler Auditorium
- 12 SPB Comedy Club featuring Buzz Sutherland, 8 p.m., The Chat
- 19 RHC Semi-Formal, 9 p.m. - 1 a.m., The Castle
- 20 SPB Major Concert, 8 p.m., Kuch Gymnasium

December

- 3 Comedy Club featuring The Have Nots!, 8 p.m., The Chat
- 3 Film: *TBA*, 10 p.m., Stiteler Auditorium
- 4 Film: *TBA*, 8 p.m., Stiteler Auditorium
- 5 Film: *TBA*, 6 p.m., Stiteler Auditorium
- 8 Finals Fling featuring The Tune-In Game Show, 9 p.m., The Chat



What was your biggest fear when coming to Beaver?

"My biggest fear was meeting my roommate. I really didn't know what to expect."

-Angie Davis, Junior

"Failing. I had heard that a particular professor was really hard. When I met with him before I came to Beaver he has said to me that you have to get down to business, be dedicated and not everyone can make it. I feared failure but I made it."

-Kelly Paulin, Senior

"I feared how good the food was going to be. I heard other schools had it really bad."

-Todd Hacker, Senior

"I was most apprehensive re-finding out how the GLBT students are treated. I should have been more preoccupied with how the GLBT students treat each other. If nothing else, I learned that everyone has different levels of comfort when expressing their sexual orientation, and that's ok."

-Laura Strimpel, Sophomore

"One of my biggest fears was how my relationships with my old friends and family would change. We had all grown up together and it was now time separate."

-Jami Rodriguez, Senior

Athletic Coaches for 1999-2000

Softball	Linda Detra	2996
Baseball	Stan Exeter	4028
Woman's Soccer	Art Goon	4046
Swimming	Victoria Grocki	2951
Volleyball	Leslie Hays	4018
Golf	Bruce Keller	2922
Field Hockey	Laura Lane	4018
Women's Tennis	Tom McGovern	2978
Men's Basketball	Chris Mooney	2976
Men's Soccer	Tom Roller	2976
Women's Basketball	Orick Smith	2978

Work Study

by Liz Rihl, Enrollment Management

If you receive a College Work Study Award as part of your financial aid package, and you are interested in receiving a job placement this fall, you should have already submitted an employment application to the Enrollment Management Office.

If you have not done so, please submit your application immediately. There will be a work-study session for all work study-eligible students during the fall orientation. This year, the session will be held on Tuesday, August 31 at 1:30 p.m. in Murphy Hall, Stiteler Auditorium. While information regarding pay dates, direct deposit options, etc. will be discussed at the session, please note that work study- eligible students are expected to monitor how much of their work study award they utilize throughout the academic year. Information on your allocation thus far and how much is remaining will be included with a monthly paycheck for any hours that you work.

Job placements for all work study eligible students who have submitted an employment application to Enrollment Management will be made, for the most part, during the first few weeks of classes. Your job placement form will indicate the department you have been placed with, as well as the name and phone number of your direct supervisor. It is your responsibility to contact him/her and arrange a work schedule based on your availability.

In the meantime, if you have questions concerning campus employment, please contact the Enrollment Management Office at (215)572-2980 or via e-mail at finaid@beaver.edu. Office hours are Monday through Friday, 8:30 a.m.- 5:00 p.m.

Please note that information regarding off-campus employment options is available in the College's Career Services, located in Knight Hall.

Public Safety from page 1

**Use the escort service that we at Public Safety provide.

**If anyone is interested in joining our Student Patrol contact Angela Bey at ext. 2800.

**Make yourself familiar with the Emergency/escort call boxes in various parking lots. There is a BLUE light above each call box.

Again, welcome. If I can be of any assistance, call me at ext. 2800.

Jim Bonner
Director of Public Safety

KUCH CENTER HOURS – FALL – 1999		
	RECREATIONAL FACILITIES	POOL HOURS
Monday	7:00 AM - 11:00 PM	11:30 AM – 1:30 PM, 3:00 PM – 8:00 PM
Tuesday	7:00 AM - 11:00 PM	11:30 AM – 1:30 PM, 3:00 PM – 8:00 PM 7:15 AM – 8:15 AM
Wednesday	7:00 AM - 11:00 PM	11:30 AM – 1:30 PM, 3:00 PM – 8:00 PM
Thursday	7:00 AM - 11:00 PM	11:30 AM – 1:30 PM, 3:00 PM – 8:00 PM 7:15 AM – 8: 15 AM
Friday	7:00 AM - 9:00 PM	11:30 AM – 1:30 PM, 3:00 PM – 8:00 PM
Saturday	11:00 AM - 8:00 PM	2:00 PM – 5:00 PM
Sunday	1:00 PM - 10:00 PM	2:00 PM – 5:00 PM Pool Hrs. Exception: During Swim Team Practice, Oct thru Jan. Lap Swim 3 – 4 PM and 6 – 8 PM
<u>FAMILY SWIM HOURS:</u>		
Friday:	7:00 PM to 8:00 PM	
Sat. & Sun:	2:00 PM to 3:00 PM	
Note: Pool hours are subject to change due to staff restraints.		

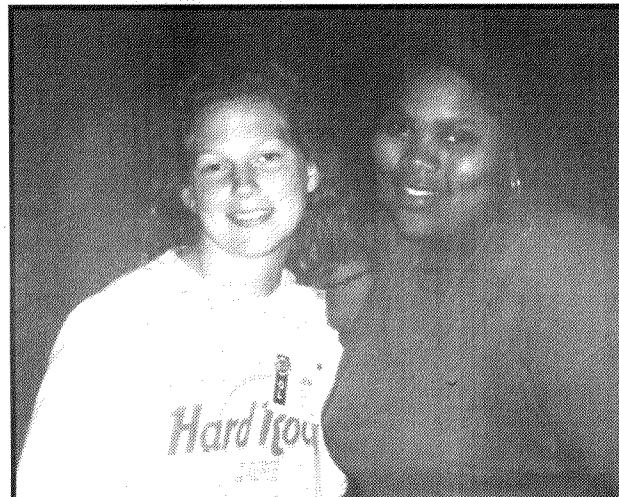
Orientation



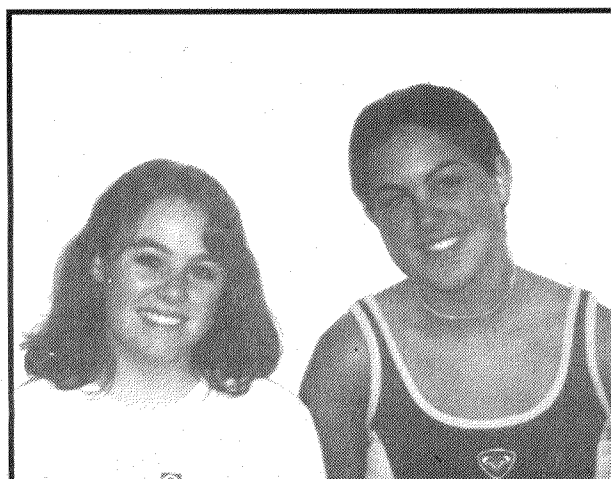
OPEC from left to right: Debbie Urban, Jami Rodriguez, Beth Wrable, Shawn Benning, Brandi Hine, Kevin Hagan, and Cat Kirschner.



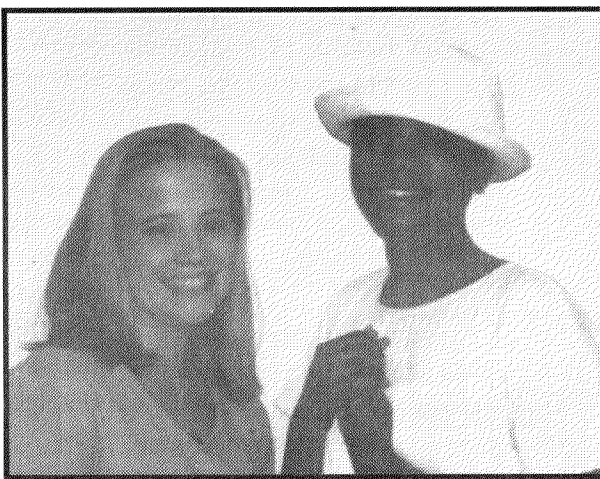
OL Group 1
Jennifer Ahern and Lindsay Simpson



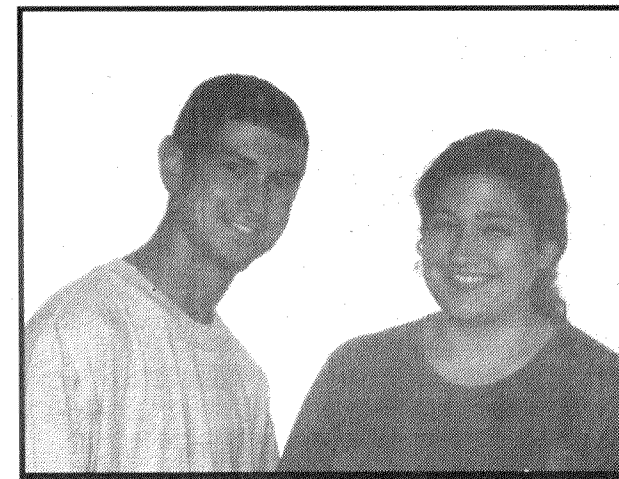
OL Group 3
Jen Bach and Joy Matthews



OL Group 7
Keely Costello and Libby Bruccoleri



OL Group 8
Kelly Laughlin and Merium Burwell



OL Group 9
Joe Carey and Maureen Fanelli



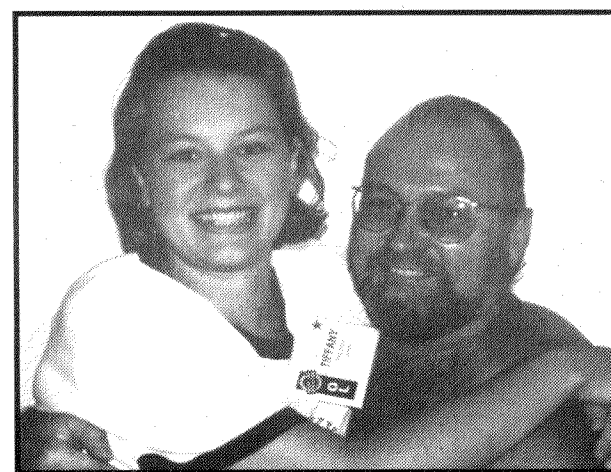
OL Group 13
Pat Fanelli and Rylan Ernest



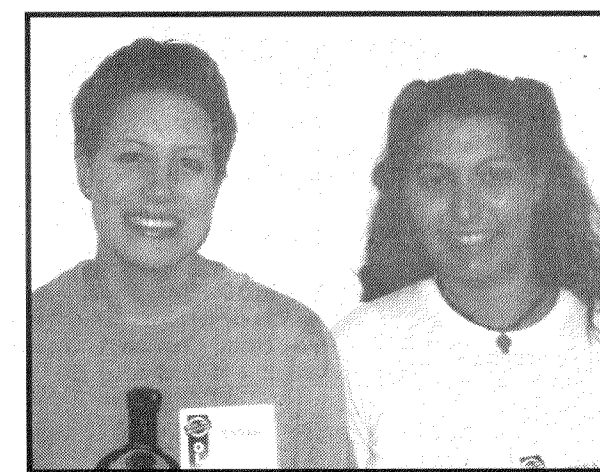
OL Group 14
Kendra Stoner and Tom Glaze



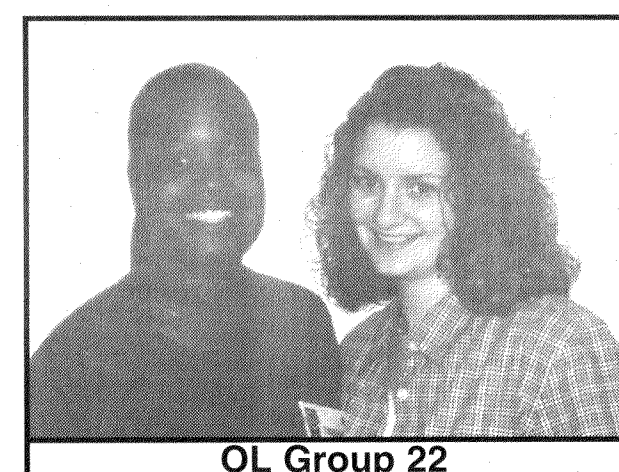
OL Group 15
Brian Hiller and Rose O'Brien



OL Group 20
Tiffany Miller and Carl Showers



OL Group 21
Sarah Nissen and Shanna Smith



OL Group 22
Tameka Thompson-Jordan
and Jen O'Connor

August 27, 1999

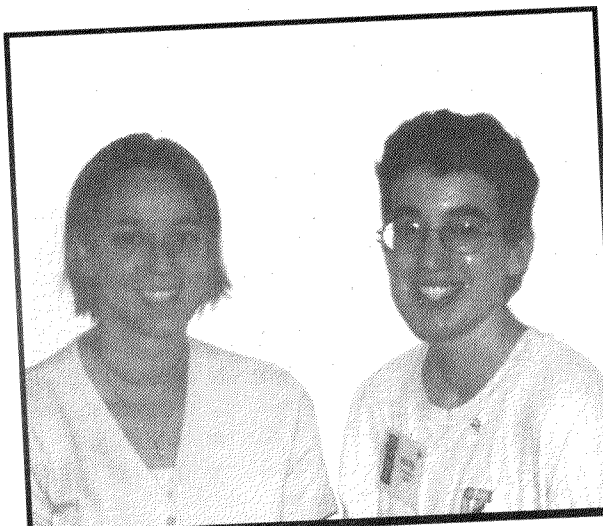
The Tower 5

Staff 1999

Not Pictured:
OL Group 2
Leah Arbeter & Michelle Quigley
OL Group 16
Jessica Jubok & Sue Richardson



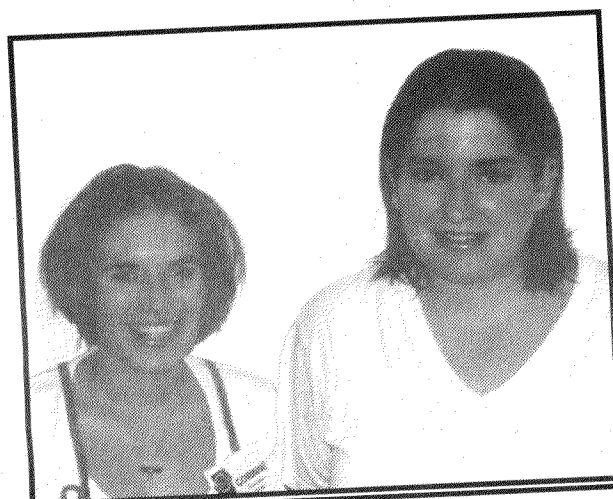
OL Group 4
Donelle Brotz and Jesse Barlow



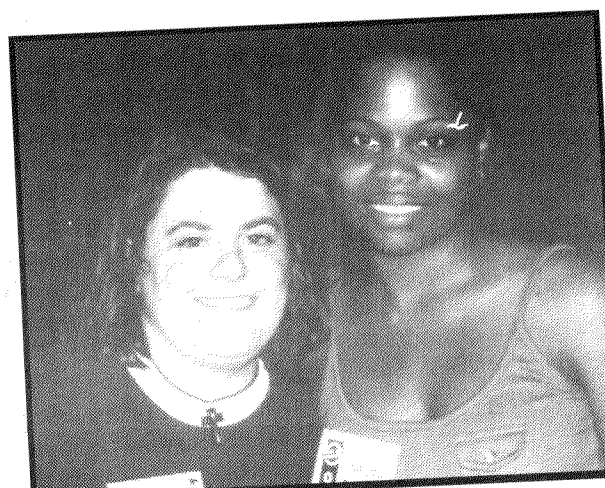
OL Group 5
LeAnn Ott and Kate Bolmarcich



OL Group 6
Meg Brady and Tricia Kershner



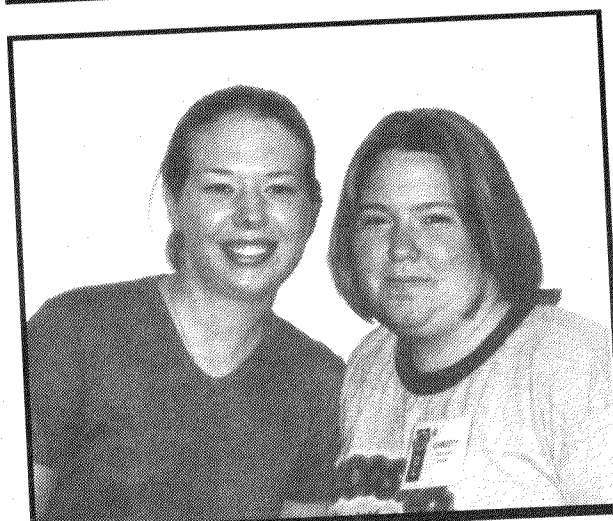
OL Group 10
Corinne Royer and Heather Cowdrick



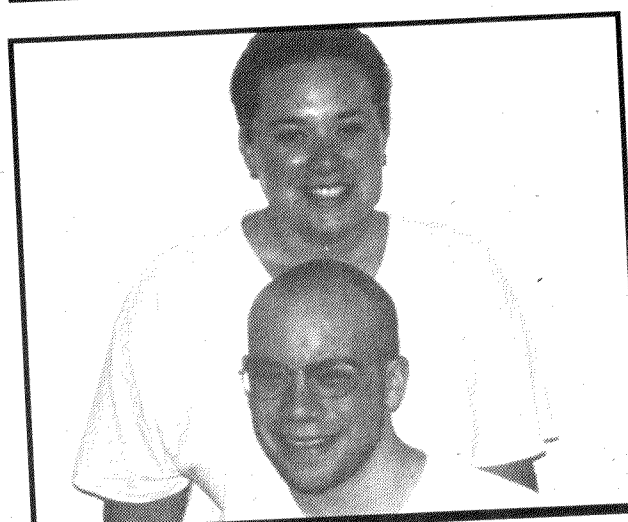
OL Group 11
Mandy Schorle and Thelma Custis



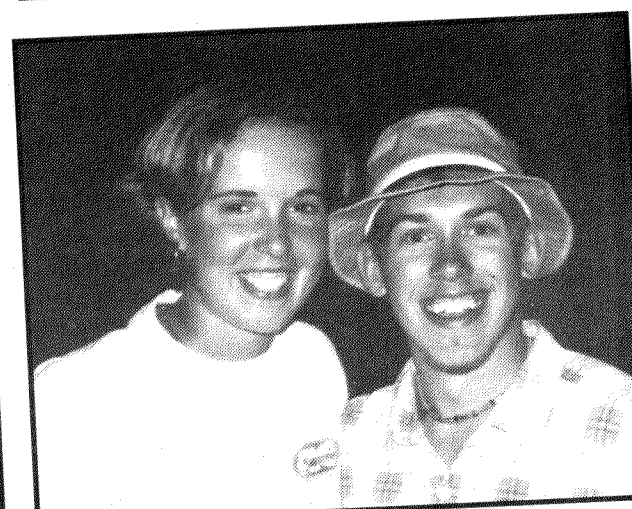
OL Group 12
Kelly Devine and Mary Ellen Tobin



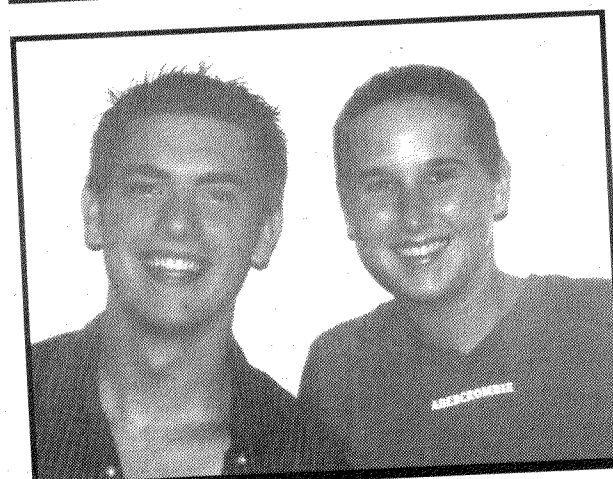
OL Group 17
Heather Sherwood and Christy McGowen



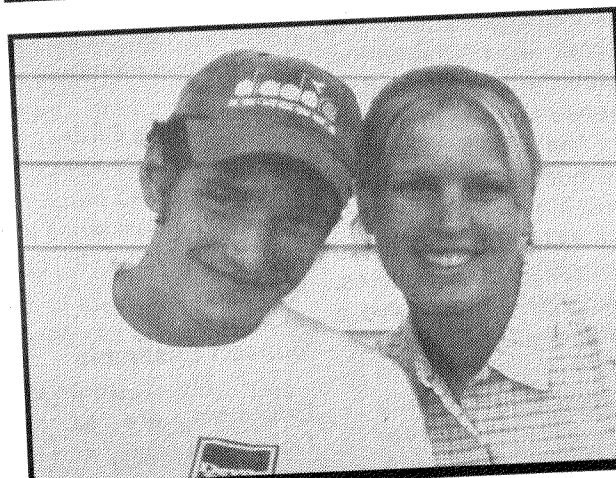
OL Group 18
Melissa Schaefer and Joe MacNeil



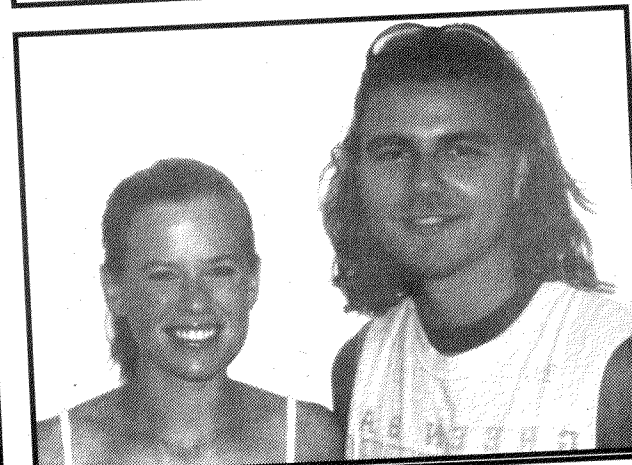
OL Group 19
Abbey Ryan and John Miller



OL Group 23
Bret Schukis and Molly Reimer



OL Group 24
Jon Skone and Nancy Root



OL Group 25
Nicole Sims and Tibor Torok

Clubs continued from page 2

ers, designers, photographers and business staff members.

To Be Continued...

To Be Continued... is a newsletter published by the Continuing Education students. Its purpose is to serve as a vehicle for communication and for sharing thoughts and perceptions for Beaver College continuing education students.

WBVR

WBVR is a non-profit AM radio station operated for Beaver College. It broadcasts music, news, sports, provides entertainment, public information of interest to the students of Beaver College, and provides a forum for intellectual discussions.

Honoraries

Kappa Delta Pi

Kappa Delta Pi is an international honor society in Education. It recognizes excellence in scholarship, worthy educational ideals, high personal and professional standards and leadership qualities. The Beaver College chapter, Zeta Nu, sponsors a number of projects in the field of education, including career and professional seminars and a faculty recognition program.

Phi Alpha Theta

Phi Alpha Theta is an international history honor society. To be eligible for membership, a student must have taken at least three history courses and compiled a minimum scholastic average of 3.1. In addition, a student must have at least a 3.0 in two-thirds of the remaining courses. Nominations and self-nominations are solicited once each semester (usually during October and March).

Phi Kappa Phi

In 1994, Beaver College established a chapter of the Phi Kappa Phi Honor Society. The primary objective of the national Honor Society of Phi Kappa Phi is the recognition and encouragement of superior scholarship in all academic disciplines. Phi Kappa Phi is an honor society, not an honorary society. Membership is earned; it is a true honor. Admission to Phi Kappa Phi is by invitation only and requires nomination by the chapter.

Phi Sigma Tau

Phi Sigma Tau is a National Philosophical Honor Society. The chapter at Beaver College is Epsilon and recognizes students who have displayed an interest in philosophy and who have demonstrated a sensitive understanding of philosophical issues. The purpose of the society, apart from awarding academic distinction, is to offer its members the opportunity to attend lectures which either focus upon scientific philosophical topics or approach other academic disciplines through philosophy. To be eligible for membership, a student must have taken two philosophy courses and compiled a minimum scholastic grade point average of 3.0. In addition, the student must have a 3.0 cumulative grade point average.

Pi Delta Phi

Beaver College has been a member of the National French Honor Society since 1958. To become eligible for this honor society, a student must have completed one semester above the Intermediate level of French, have earned a 3.0 average or better in all classes in French, and have an overall cumulative average of 2

Psi Chi

Psi Chi is the honorary society in psychology. To be eligible for membership, a minimum of 8 credit hours with a 3.0 average in psychology is required. In addition, the student must not rank lower than the top 35 percent of his/her class. The society works with the Psychology Department on programs of visiting lecturers, discussions, films, and social events.

Sigma Beta Delta

Sigma Beta Delta is an international honor society in business, management, and administration. To be eligible, seniors must be following one of the majors in the Department of Business/Health Administration and Economics. They must have earned at least 45 credits at Beaver College of which at least 15 must be in business for business majors or business and health administration for health administration majors. No more than 20 percent of the seniors in the department may be invited to join. In recent years, the department has required an overall GPA of 3.00 and a departmental GPA of 3.60. Higher GPA standards have been applied for those inducted as juniors.

Sigma Delta Pi

Sigma Delta Pi, National Collegiate Hispanic Honor Society founded at Beaver College in 1991, is a member of the Association of College Honor Societies, and is affiliated with the American Association of Teachers of Spanish and Portuguese and the Modern Language Association.

To be eligible for membership, students must have completed three years of college Spanish or the equivalent thereof, including at least one course in Hispanic literature or Hispanic culture and civilization at the junior or senior level. Students must have a 3.0 average in all Spanish courses and a 2.75 grade point average in all college courses.

Sigma Zeta

Sigma Zeta is the honorary society in mathematics. The chapter at Beaver College is Beta Epsilon. The purpose of this organization is to increase interest in mathematics, encourage creativity in independent work, and increase interest in individual learning. The qualifications for membership include the completion of at least three courses in mathematics (one may be concurrent) and a 3.0 average in all mathematics courses. In addition, the student must have a cumulative average of 2.75.

Special Interest Clubs

A.S.I.A. (Asian Students in America)

The purpose of ASIA is to represent the interests of Asian

Americans and people of Asian descent in all Beaver College activities. This organization works to educate its members and the campus community about the historical contributions of Asian Americans, facilitates cultural exchange among the campus population, and provides academic and social support to the Asian American population on campus.

Beaver Christian Fellowship

Beaver Christian Fellowship, an inter-denominational Christian ministry to college students, is part of a world-wide organization. As an active group on campus, we hold weekly gatherings featuring speakers on various topics, as well as other events. We also provide several small groups that study different topics and books of the Bible. We participate in week-long and weekend conferences and retreats with other area colleges and universities. We offer many opportunities for students to come and ask questions about God as well as opportunities to learn and grow in faith in God. All interested Beaver students are welcome to attend!

Beaver Service Network

Beaver Service Network is an organization dedicated to promoting and encouraging community service among the Beaver College community. The network will coordinate activities in which students may participate. It will also recognize those people who provide service to the community.

Black Awareness Society (BAS)

The Black Awareness Society is an organization whose purpose is to increase the sensitivity and knowledge of the student body to the contributors of Blacks toward the development of American World Culture.

Its aims are to perpetuate black awareness among blacks and whites; to acquaint the student body, faculty, staff and administrators with the problems of black students on predominantly white campuses, and the problems and frustrations of black people in today's society; and to assist the College in the active recruitment of students from sectors of society who might not be aware of the advantages offered by Beaver College. Membership is open to all students interested in forwarding the aims and purposes of the society.

Castleaires

The purpose of the Castleaires is to provide a student-directed, student-run, a cappella women's ensemble. Membership is open to all women students. New members are chosen by audition by the previous members.

Cheerleading Club

The Cheerleading Club provides interested students a chance to support the basketball teams as a unit. The club works to promote school spirit.

Concert Ensemble

The purposes of the Ensemble are to represent the College musically and to further musical interest within the College. Membership is open to Beaver students, faculty and staff.

Day Student Club

The purpose of this organization is to attend to the needs and interests of commuter students. The club sponsors activities for commuter students throughout the year. They are responsible for the upkeep of the Commuter Lounge located on the ground floor of Heinz Hall. Every commuter is a member of this club.

D.I.F.F.E.R.E.N.C.E. - Different Individuals Fighting For Everyone's Right to Enjoy a Non-Discriminatory Co-Existence

D.I.F.F.E.R.E.N.C.E. is a group of strong-willed individuals at Beaver College that are striving to be fearless of prejudice and racism in the hopes of creating a non-threatening environment. We accept individuals of the world as a whole. As role models and leaders we strive to stimulate discussion, promote learning, and challenge others to help break down the barriers of prejudice. Our goal is to promote equal respect for all and to unite through our DIFFERENCE!

Equestrian Club

The Equestrian Club provides students interested in horseback riding with a chance to engage in the following activities: ride for pleasure, receive professional instruction and compete in intercollegiate horse shows. The purpose of the club is to have a team of riders to represent Beaver College at the Intercollegiate shows. Membership is open to all interested students.

Gospel Choir

Hillel

The name of the organization is B'nai Brith Hillel Foundation of Beaver College. The purpose of Hillel is to provide various aspects of Jewish culture and life to interested students in the College community.

International Club

This club is organized to welcome international students in the Beaver College community; to promote understanding of other cultures; to provide opportunities for both American and international students to interact and to learn to recognize and accept one another as individuals; and to sponsor activities to encourage the realization of the above-mentioned aims; and to provide additional opportunities for the international students to practice their conversational English and to learn about American customs.

Membership is open to all interested Beaver College students and faculty, as well as the students and faculty of the American Language Academy.

LATINO Association

LATINO was established to enhance awareness and knowledge of Latino(a) issues at Beaver College. The association aims to provide support and resources to the Latino(a) campus community; to facilitate and promote communication among members; and, to sponsor activities that ensure LATINO's purpose. It also

Clubs continued on page 7

Clubs continued page 6

aims to assist the College in the active recruitment and retention of Latino(a) and multicultural students. Membership is open to all students, staff and faculty.

Martial Arts Club

Neumann Club

Founded on the principles of the Catholic faith, the Neumann Club works to provide a community for the Catholic students on campus, develop awareness of Catholicism, provide opportunities for people of all religious traditions to worship, and to engage in service projects both on and off campus. Membership is open to all interested students.

Peers

Peers was founded to educate and inform the Beaver College community about issues related to the use and abuse of alcohol and other drugs, as well as to educate and inform the College Community about important issues facing College students today. Through formal programming, discussions, and educational and social activities this group's goal is to promote awareness and discussion of these issues.

PRIDE

This organization exists to serve Beaver College with social and educational opportunities for people who are involved in and are supportive of the lesbian and gay community. The group members promote a better awareness and strive for the acceptance of sexual minorities through education and support to both gay and non-gay students.

Residence Hall Council (RHC)

This organization is comprised of elected representatives from each residence hall. They take an active role in advancing the welfare of the students living in the residence halls. RHC provides programs for residents and assists in formulating housing procedures and regulations.

Rotaract

The purpose of Rotaract is to provide an opportunity for students to enhance the knowledge and skills that will assist them in personal development, to address the physical and social needs of their communities, and to promote better relations between all people worldwide through a framework of friendship and service. Members of Rotaract engage in service activities on a local and global level.

Student Environmental Action Coalition (S.E.A.C.)

The mission of SEAC is to improve the natural environment on and around the College campus while promoting environmental awareness and education to the campus community. SEAC works hard to improve and maintain the campus recycling program, as well as sponsor and participate in other campus and community projects.

Student Alumni Association (SAA)

The purposes of SAA are to stimulate the interest of undergradu-

ate students in the service and advancement of Beaver College and to further the feeling of loyalty and fellowship among the College, students and alumni. SAA shall provide such services and programs as it sees fit in the exercise of these purposes. SAA assists the Alumni Office with the programs and services it offers to Beaver College alumni.

Student Programming Board (SPB)

The Student Programming Board plans, organizes and oversees a majority of the extracurricular activities on campus. SPB sponsors several social and cultural events throughout the year, including coffee house acts, dances, traditional events, films, and off-the-wall entertainment. Bringing some of the top national entertainers to the College, SPB plans a wide variety of programs to meet the diverse interests of the campus community.

Students Against Drunk Driving (SADD)

SADD was formed to inform and educate the Beaver College community on the harmful effects of drinking and driving. The group combines prevention, education and information with practical solutions to the drinking and driving situation. Other objectives of SADD include reducing the number of alcohol-related deaths, injuries and arrests in college communities, and encouraging responsible use of alcoholic beverages by students of legal age who choose to drink.

Student-Faculty Committees

In order to provide student participation in the decision-making process of the College and channels for communication among the various sectors of the College community, students are elected by the Student Government Organization to the following Faculty Committees.

Judicial Board

(Adjunct Committee of Student Affairs)

Membership

1. Four members of the faculty appointed by the Faculty Council, and three students selected by the appropriate Student Government Organization. One of the faculty members serves as chairperson and votes only in the case of a tie. The chairperson should be someone who has previously served as a member of the Board. For cases involving undergraduate day students, the three student members should also be from the undergraduate day program; for cases involving evening students, the three student members should be from the evening program. For cases involving graduate students, the three student members should be graduate students.

2. Terms of office for members run the length of the academic year or until their successors are duly appointed.

3. Should a member be unable to or be disqualified from hearing a particular case, a replacement faculty member is appointed from a list of alternates selected by the Faculty Council. Replacement student mem-

bers are appointed from a list of alternates selected by the Student Government Organization.

4. If a member of the Judicial Board is involved in a case as the accused, the accuser or a witness, that member shall not participate, deliberate or vote on the case.

5. A quorum for a hearing of the Judicial Board is defined as two student members and two faculty members (excluding the chair person).

Duties

The Judicial Board is responsible for adjudicating alleged violations of any College regulations and student-made regulations. It has jurisdiction over alleged violations of the Code of Academic Responsibility when the violation is not the first offense or when the accused student or the instructor concerned so requests.

Undergraduate Academic Programs Committee

Membership

The Undergraduate Academic Programs Committee consists of five teaching faculty members, the Dean of the College, the Dean of Continuing Education, and four students selected by the Student Government Organization (three undergraduate day students and one student from Continuing Education, to represent at least three of the divisions). The Vice-President for Enrollment Management, the Library Director, and the Registrar serve as ex officio. The four student representatives vote only on matters of policy. The meetings of the committee are open to others by invitation.

Duties

1. To review policies and academic regulations governing undergraduate studies: programs (degree and non-degree, majors, minors, concentrations, cores and certification) and components of programs (courses, syllabi).

2. To initiate and to receive (from individual faculty members of departments) proposals to introduce new programs or courses, and proposals to alter or discontinue established programs or courses.

3. To approve the addition, substantial alteration, or deletion of courses within programs already approved by the faculty. If the faculty member or department affected is dissatisfied with the committee's decision, the parties concerned may take the matter to the faculty for consideration.

4. To make recommendations to the faculty on (a) proposals affecting the objectives, nature and general framework of established undergraduate programs; (b) proposals to add new programs, including their curricula; (c) proposals to discontinue established programs; (d) policies governing undergraduate students' continuance in good standing and graduation requirements; (e) policies with respect to academic credit, grading and standards of instruction.

5. To make recommendations to departments on coordination and integration of their activities.

6. To oversee evaluation of the undergraduate programs for periodic review.

7. To consider appeals by a department from decisions made by the Dean of the College concerning temporary cancellation or elimination of courses due to insufficient enrollment, economic exigencies, or other reasons.

8. To keep itself informed on current trends in undergraduate studies.

9. To review as needed the bylaws of the faculty relating to Undergraduate Academic Programs Committee, subject to the approval of the faculty.

10. To appoint ad hoc committees to assist it in carrying out its special duties.

11. The elected faculty representatives on the committee should report regularly to and consult with the groups they represent.

12. To oversee the operation of the academic programs of the Beaver College Center for Education Abroad.

a. To review undergraduate study programs abroad organized by Beaver College faculty.

b. In geographical areas already served by the CEA, to review new academic programs that deviate substantially from the programs currently being conducted by the CEA.

c. To review all new academic programs proposed by the CEA in new geographical areas.

Students Offer Their Side of the Story

by Liz Rihl, Enrollment Management

This year the Office of Enrollment Management felt it was time to present Beaver College through the eyes of our students. On Sunday, September 26th we will play the role of support staff as Beaver College students facilitate an Open House.

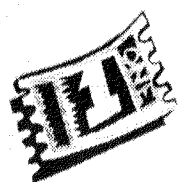
This Student-to-Student Open House will be presented by students for students; this is a unique opportunity for you to present Beaver from your perspective. We will provide you with all the resources and information needed to present academic sessions, campus life and other topics schedule.

It is our hope that many of you will participate in this program, and help prospective students gain a better understanding of life at Beaver College. You can choose to present, give tours, mingle, provide information about your particular club or organization, or initiate something new! It is your enthusiasm and expertise about Beaver College that will make this Student to Student Open House a success.

We hope that many of you will participate in some way. The Student to Student Open House will be unique in the Philadelphia area, and with Beaver College student support, it will be an outstanding event. Please contact Kathy Beardsley at (215) 572-2910 or extension 2828, for more information or to sign up for this great event.

Student Programming Board

SEPTEMBER EVENTS



FALL KICK-OFF

featuring *Russ Merlin*

Wednesday, Sept. 1 - 9:00 p.m. - The Chat

What do you get when you combine comedy, the excitement of a sporting event and the world's most hilarious audience participation stunts? The Russ Merlin Show is the answer! Merlin has performed at more than 150 colleges throughout the U.S., and has spent the past two-and-a-half years entertaining in more than 51 countries. Don't miss this crazy performance!

The Student Programming Board, Student Government
Organization and Residence Hall Council present

WELCOME BACK BASH

September 10 & 11

On Friday night at 9:00 p.m. see *THE MATRIX* the way it was meant to be seen! The Great College Drive-In Movie is coming to campus with their GIANT movie screen and digital surround sound system. Then, on Saturday dance the night away with one of the hottest bands in the Lehigh Valley... *HOOSIER DADDY!* Band will perform 10 p.m. - 1 a.m. in the lower level of the Dining Hall.



Common Ground Cafe



featuring *Lezlee Peterzell*

Friday, Sept. 17 - 8:00 p.m.
The Chat

Lezlee Peterzell has a voice that is unparalleled, a unique style on the guitar and the ability to write catchy songs that celebrate everyday life and the range of human emotions. With an uplifting smile and a warm presence, Lezlee radiates with passion for both life and music. In concert, her personality makes the rapport with her audience close and personal - as if she's invited each person into her living room. Winner of the President's Award for Excellence in Songwriting from The Songwriter's Guild of America, Lezlee is poised for superstar success.

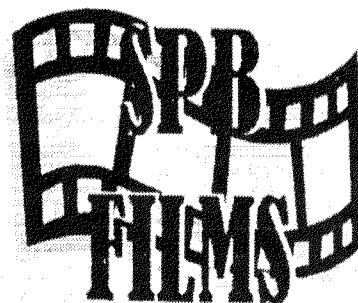
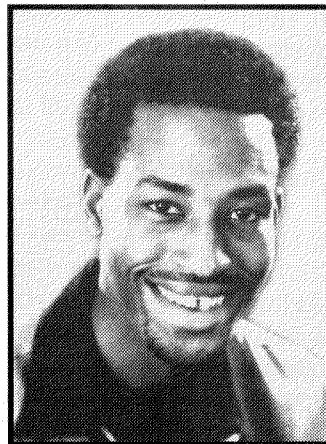


Comedy Club

featuring *Dwayne Perkins*

Friday, Sept. 24
8:00 p.m. - The Chat

In a market saturated with talented and funny people Dwayne Perkins has prevailed and shot to the head of his class. Splitting his time between New York, Boston and Los Angeles, he has built a strong reputation in each city as a hysterical comic with his unique blend of street savvy, sheer wit and intellect.



GREASE

Sept. 3 & 4 at 8 p.m.

GREAT COLLEGE DRIVE-IN MOVIE

THE MATRIX

Friday, Sept. 10
9:00 p.m.

behind Murphy Hall (Kuch if rain)

THE

GENERAL'S DAUGHTER

Friday, Sept. 17 - 10 p.m.
Sat., Sept. 18 - 8 p.m.
Sun., Sept. 19 - 6 p.m.

NOTTING HILL

Friday, Sept. 24 - 10 p.m.
Saturday, Sept. 25 - 8 p.m.
Sunday, Sept. 26 - 6 p.m.