

Blood Drive is Successful

By Jody Terrell Wilkins

You have been the flyers. You have heard the hype. The American Red Cross Bloodmobile has graced our campus, provided their services in Heinz lobby all day on Nov. 2 and zoomed off to another location.

There were tables which provided registration forms that all donors had to fill out and there were many beds with nurses along side them. These nurses came from their homes for they were assigned to come to Beaver from twenty-third and Chestnut which is the

Red Cross main building. These nurses were not volunteers. They get paid for their services.

Their services has been a yearly thing for the Beaver community for many years. The turnout in the past has been good and this year is no different. Kathleen Higgins, the nurse manager in charge of the unit said there was a "very good" mixture of people who came and donated blood.

In order for a person to donate, he/she had to fill out a registration form and answer some questions pertaining to their medical history. If the

person has never had hepatitis, AIDS, or hasn't recently taken penicillin and is 110 pounds or more donated blood. There is a 5 day deferral when one has taken penicillin. This gives time for the infection and the penicillin to clear the system. The Red Cross also defers people from giving blood for their own health.

Even though some people couldn't give there were many who could. Ms. Higgins said, "Yearly you always make your goal or if you don't make it you're just like a little short of it." Their goal each day (for this

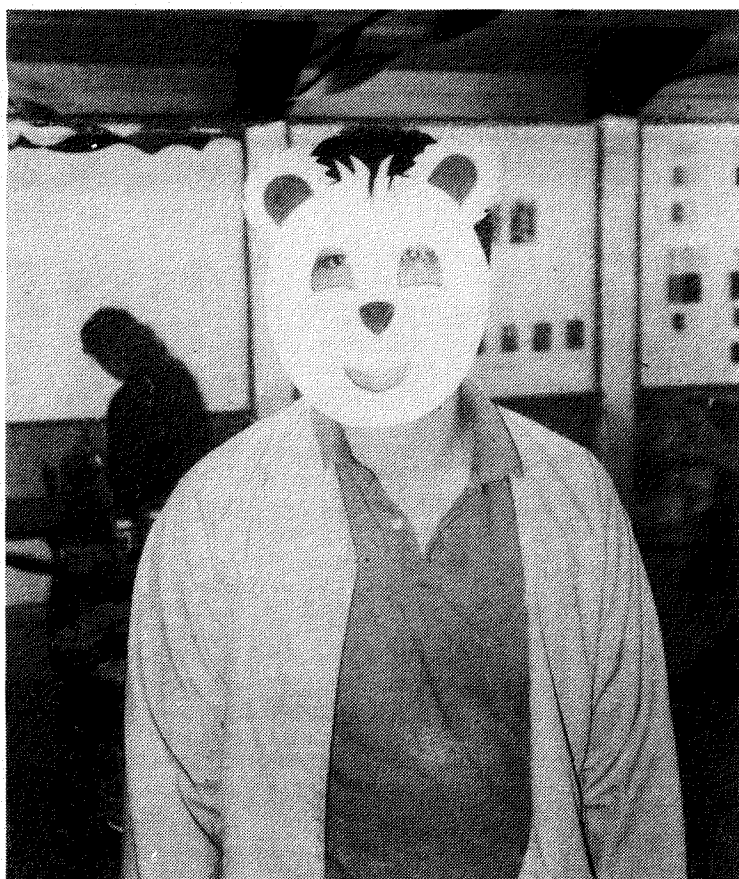
is a full-time job), is 1800 pints. At the time I talked to Ms. Higgins, she told me that they collected at least 116 pints of blood.

The pints go to the lab at twenty-third and Chestnut and screened for AIDS, hepatitis and syphilis contamination. The blood is screened even though the medical history of each donor is known. After they are finished screening them, they are stored in freezers at the location. Everyday hospitals call up and order how many pints of each blood type they need. "...Philadelphia hospitals and

teaching hospitals are big and they perform very advanced surgery that requires a lot of blood. They do transplants and the bypass surgery which takes a lot."

A person is definitely encouraged to give blood. There are many people everyday who need blood. However, "There is a very small percentage of people who give blood in ratio to the number who are eligible to give."

Well if you didn't give blood this year, hop on the bandwagon next year. Your blood is always needed.



Why Are There No Condom Machines In Kistler?

The question has been asked so many times. Why aren't there any condom machines in Kistler? Considering the fact, that when the condom machine issue was brought upon the school as to where the machines would go if they were to be installed and both 2nd South and 2nd West bathrooms were on the list. What happened to them? We all know that Kistler is sometimes referred to as the Beaver con-

vert, but we all know that is not true. I understand that the condom machines were not installed to promote sexual activity, but for those who decide to engage in sex that they go about it safely. The transmission of sexually transmitted diseases and the mistake of unwanted pregnancies are what the condoms are for. After some research I learned from Joanie Slotter, Assistant Dean of Students, the condom machine project was under the

direction of Larry Roper, last year's Dean of Students and there was a conflict to where the machines were to be installed in Kistler, so that issue was put on hold until the conflict was resolved. Well, Larry departed in August, and the Condom Machine issue fell through the cracks. Joanie is now in the process of contacting the company that installed the machines and having the machines for Kistler installed.

From Fran

Alcohol came to America with the explorers and colonists. In 1620, the Mayflower landed at Plymouth because, it says in the ship's log, "We could not now take time for further search on consideration, our victuals having been spent, especially our beer..."

From Loosening the Grip a handbook of alcohol information Kinney, J. & Leaton, G. (1987). St. Louis: Mosby.

Hello to all. For a little change of pace and to sharpen your alcohol acumen, how about a few, ever-popular TRUE AND FALSE questions?

1. A 12 oz. can of beer has 150 calories.
2. Carbonation decreases the rate of adsorption of alcohol.
3. The presence of food in the stomach slows down the absorption of alcohol.
4. The increased urination following ingesting alcohol is due to the effect on the posterior pituitary gland which causes the kidneys to form a larger-than-normal amount of urine.
5. A man of average height, weighing 160 lbs. can metabolize 1/3-1.2 oz. of ethanol in 1 hour.
6. In women, the menstrual cycle does not affect the

body's ability to absorb and metabolize alcohol.

7. Due to its disinhibiting effect, alcohol is classified as a stimulant.

8. Chugging alcohol can be lethal.

9. Beliefs about the effects of alcohol on a person, have little to do with a person's responses when drinking.

10. Ingestion of methyl alcohol can lead to blindness and be fatal.

ANSWERS:

1. True
2. False. Carbon dioxide hastens the passage of Ethyl alcohol from the stomach, has the effect of increasing the rate of absorption.
3. True.
4. True.
5. True.
6. False. During the premenstrual phase of her cycle, a woman absorbs alcohol more rapidly. During the other phases, absorption is slower. There is also evidence that women taking birth-control pills will absorb alcohol faster.
7. False. Alcohol lowers

the activity of the brain. It is therefore, a depressant. Not all parts of the brain are affected equally. If they were the same, the amount required to release inhibitions would also be lethal, by simultaneously hitting the parts controlling breathing.

8. True.

9. False. In popular thought, alcohol has been invested with a great number of varied effects, that is, the power alcohol has to change the drinker in different ways. It has been shown that

Cont'd on page 4

Viewpoints

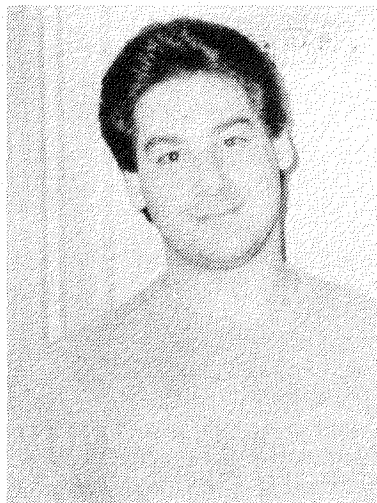
Questions and Answers

"How Do You Relieve Stress?"

By Brian Engemann



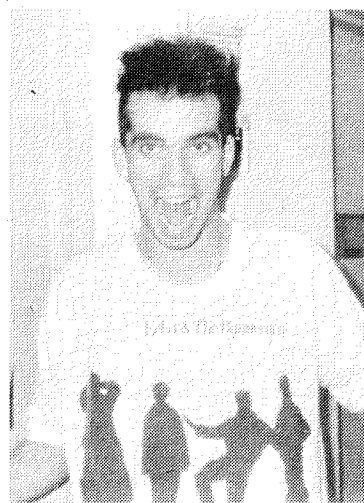
Jennifer Knell
Freshman
"Stress? What stress?!"



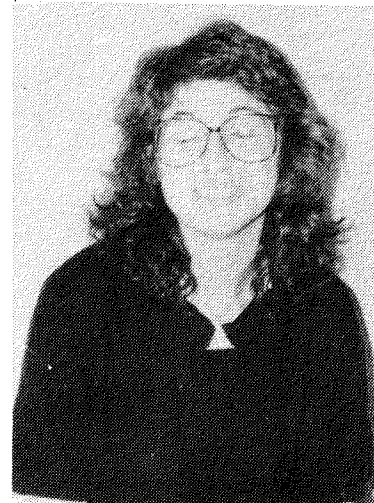
Joel Rosen
Junior
"I don't that's my problem."



Susan Caulton
Junior
"I throw myself on my bed and cry."



Jim Atkinson
Junior
"I drink and Slamdance."



Adrienne Oldstein
Freshman
"I hurt myself."

Getting To The Core Of The Situation

Since the time I started at Beaver as a transfer student, I've had to deal with fulfilling core requirements. The problem wasn't the fact of having to take eight extra courses. It is more the problem that these courses are added in your G.P.A.

Most students that I've talked to, think that it's great to have these requirements so that we can be well rounded individuals. They don't agree with the fact that these courses are blended with our major requirements to make up our G.P.A. The reason most don't feel cores should be added as a part of our grades is that these courses are always far away from a student's major of study.

There are Biology majors who aren't good at English and English/Communication majors who aren't good at science. The problem starts when a student doesn't do well in the required course. If a D is received in a course it's added in your G.P.A. with the courses that you will be using towards your career. Grant it that there are stu-

dents who are good in all subject areas but there aren't many who don't complain about the requirements.

The solution to this problem is to make the core requirements. If a student fails at least it is realized that they had the chance to pass.

It may seem like this isn't an important issue but it is when you're a transfer student with excellent grades, and who is a well rounded person who just can't seem to do well in required sciences - even with extensive studying. My personal opinion is...why should my major suffer because of requirements that I most likely won't use again? The requirements get harder every year and this year the incoming freshmen's complaint is that they have to take a language, along with the core requirements in science, etc.

It seems that the requirements get harder before they get easier and sometimes it's really defeating when you're doing very well in all of your classes except that nagging core requirement that keeps a lot of us behind.

Gina J. Range

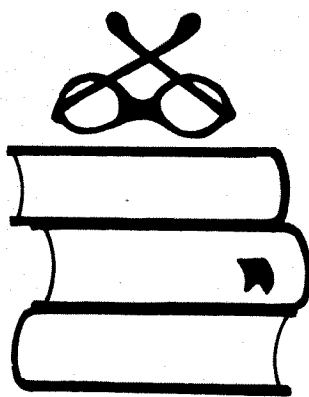
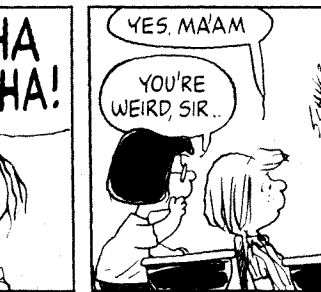
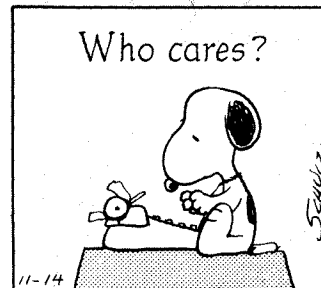
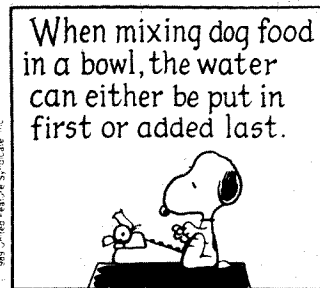
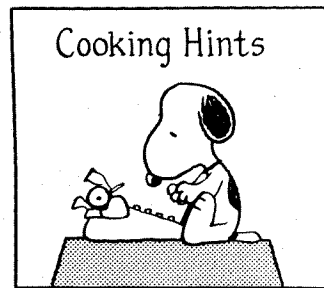
Dear Editor

Dear Editor,

Whenever I tell other students about an event for a special interest club such as Hillel; they always say, "I am not Jewish." One does not have to be Jewish to come to

an event. Anyone can come to an event. So do not hesitate to come to the dance, "One Moment in Time," sponsored by Hillel in Philadelphia on Saturday, November 11 in the Castle.

S.G.



PEANUTS® by Charles M. Schulz



David Pumphrey
Editor-in-Chief

EDITORS

News Editor..... Kristen Ellis
Viewpoints Editor..... Heather Nethen
Features Editor..... Sharon Hardy
Sports Editor..... Karen Rossi
Business Manager..... Karen Leong

PHOTOGRAPHY

Photography Editor..... Karen Leong
Photography Editor..... Brian Engemann

LAYOUT

Layout Editor..... Stacie Pumphrey
Layout Staff..... Tori Hockox

CLASSIFIED

Classifieds Manager..... Kerry Costello

Club Corner

Come See How Battles of Old

Were Won And Participate

If Interested

Medieval fighting practices are being sponsored by the S.C.A. on Monday nights throughout November beginning at 7:30 p.m. and ending at approximately 10:00 p.m. in the gym.

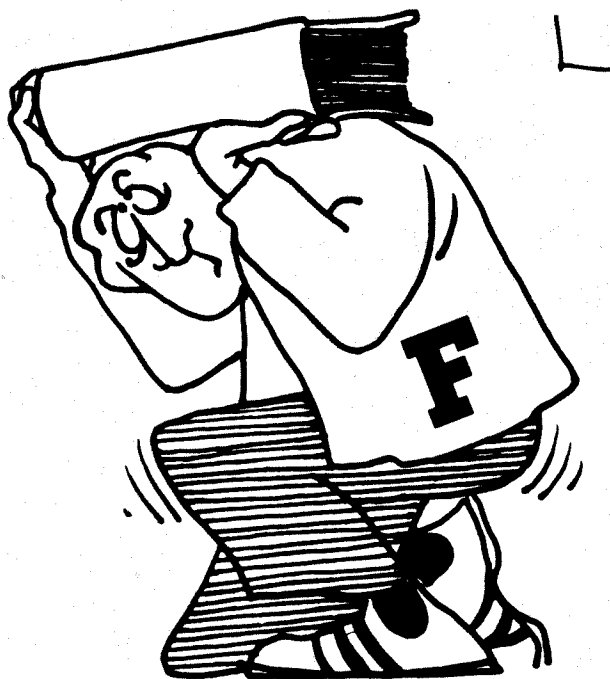
The Society for Creative Anachronism is an international organization which recreates the middle ages from 476 A.D. to 1620 A.D.

Have you ever attended a renaissance or medieval fair (such as the Pennsylvania State Renaissance Fair at Mount Hope)? Chances are that many of the people involved are active in the S.C.A.

The S.C.A. is not just for "history buffs" or actors. It is a place where everyone can

enjoy life as it may have been centuries ago. We are in the S.C.A. not just to teach or act, but because we enjoy what we do. there is a large variety of activities, though many of us choose one or two which especially appeal to us. My personal favorites are the medieval dancing and designing and making "garb" (the clothing worn in the middle ages). Others prefer the fighting (or just making armor and chain mail), fencing, or archery. Or perhaps cooking the feasts (or eating them!), singing and storytelling, illuminating scrolls, or brewing wassail or mead.

So come and see what the S.C.A. can offer you!



Cont'd from page 1

these beliefs function in maintaining drinking behavior and contributing to alcohol's potential for excusing untoward behavior. (In other words, what we expect to happen to us, or to others while drinking, has a good deal to do with making it happen.)

10. True.

How'd you do? learn anything? Tune in next time, and I'll try to have something in-

teresting for your consideration. Contact me through the Wellness Center 572-2966 or 2221, if I can be of any help to you. Alcohol Awareness group meets Mon. 8-9 p.m. We'd love to see you there.

Over and out.
Fran

CONSIDERING LAW SCHOOL?

Consider this.

The Philadelphia Institute, the nation's foremost educator of legal specialists, has developed a LAW SCHOOL TRANSITION PROGRAM designed for college graduates who would prefer to investigate the legal profession before investing in a law school education.

This one-day seminar is scheduled for Saturday, November 18, at The Philadelphia Institute.

Featured speakers will include a pre-law advisor, financial aid counselor, law school students and lawyers who will discuss:

- Whether Or Not To Attend Law School
- The Law School Application Process
- Financing Strategies
- Being A Law School Student And A New Attorney
- The Job Outlook For The Legal Profession

The cost of the program is \$40.00, including buffet lunch. For more information, contact the Admissions Office at 800-289-6321, or register by returning this coupon with your check/money order for \$40.00 to The Philadelphia Institute.

(Registrations will be taken on a first-come, first-served basis.)

☐ My registration fee of \$40.00 is enclosed.

Name _____

Address _____

City _____ State _____ Zip _____

College _____ Yr. of Grad. _____

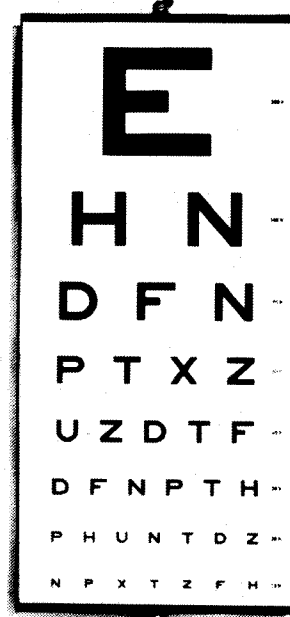
Phone _____

Mail to: The Philadelphia Institute
1926 Arch St., Philadelphia, PA 19103

LSTP



THE PHILADELPHIA INSTITUTE



HERE'S ONE TEST YOU DON'T HAVE TO STUDY FOR.

Getting your eyes examined is easy and affordable at The Eye Institute.

At The Eye Institute, we make it *convenient and affordable* for you to get quality eyecare close to campus. Everything from routine eye exams and contact lens fittings, to eye glass prescriptions and frames. At a cost that fits any student's budget.

People Who Care. When you come to The Eye Institute, you'll receive the latest in state-of-the-art eyecare. We're part of the Pennsylvania College of Optometry and are staffed by teams of faculty doctors and other eyecare professionals experienced in helping you with all your eyecare needs. We care about you. About your eyes. And about keeping your eyes healthy.

We're in The Neighborhood. The Eye Institute's nearby Oak Lane address puts quality eyecare just minutes from your door. We're located just two blocks from Broad and Stenton, close to public transportation and have plenty of free parking. The Eye Institute is even open on Saturdays! Now that's convenience!



The Eye Institute
of the Pennsylvania
College of Optometry

Located just two blocks from Broad and Stenton, in Oak Lane
1201 West Spencer Street
Philadelphia, PA 19141-3399

Phone: (215) 276-6111

Hours: Mon. & Thurs. — 9AM to 5:30PM

Tues. & Wed. — 1PM to 9:30PM

Fri. — 1PM to 5:30PM Sat. — 9AM to 3PM

Features

What would you do with this amount of money?

BEAVER COLLEGE

302 OUT OF 525
RESIDENTS SURVEYED

% of population out
of 302

average dollars per
week spent on
alcohol

25.85% MALES	\$13.12
73.85 FEMALES	5.98
22.83 LEGAL	12.89
*77.48 NOT LEGAL	6.33
100 % RESIDENTS	7.81

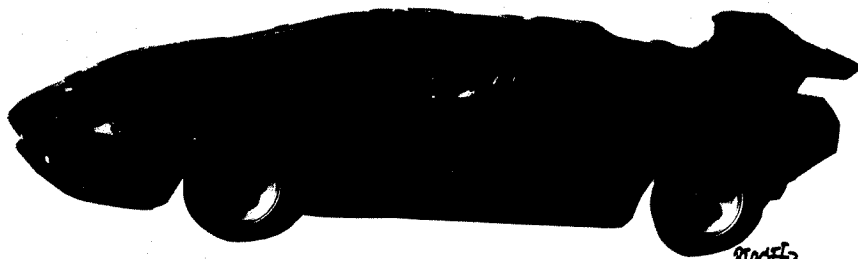
In one year (2 semesters)

Beaver residents spend \$

\$ 123,007.50

on alcohol alone!

(one could purchase a home
or a LAMBORGHINI.)



THIS SURVEY DOES NOT REPRESENT THE AMOUNT OF ALCOHOL
CONSUMED, RATHER HOW MUCH MONEY IS SPENT ON ALCOHOL.

THIS SURVEY IS BROUGHT TO YOU BY BARRY BEHNSTEIN OF 2ND EAST DILWORTH.

Send your response to *The Tower*
via Campus Mail

Record Review What's Hot And What's Not!

By Gina Range

****Excellent
***Pretty Good
**Fair
*Poor (Save Your Bread)

The Rolling Stones are on the scene again with their latest work "Steel Wheels." This LP came into creation with much difficulty because of the bands' differences but the finished product was worth the wait. Songs like the Stones first release, Mixed Emotions are bouncy with that original Stones twist. This is not saying that this comes close to their old-

er stuff or even the more recent "Tattoo You" LP. Still in all "Steel Wheels" has that classic Mick Jager swing. Sings like Sad Sad Sad and Blinded by Love make the "Steel Wheels" LP worth listening to. Besides...it's the Rolling Stones. ***for Mick.

The Rolling Stones
Steel Wheels
CBS Records

Life is full of disappointments and Bob Dylan with the Grateful Dead is one of them. Dylan and The Dead

is one of them. Dylan and The Dead doesn't seem to make much sense.

With the greatness that The Dead is known for and the unique sound that Dylan has offered since the beginning of his career, one would think this to be a great piece of work ... well one would be wrong. Live in concert these two fantastic sounds of psychedelia entranced audiences but in this recorded track, everything seems displaced and the great sound that the listener is waiting for ... it

just doesn't arrive. I give this LP ** simply because it's Dylan and The Dead. There is something really neat about this album ... it has a really funky cover.

Dylan and The Dead
CBS Records

For sheer listening enjoyment try some Bad Company. This is there greatest hits from 1985 titled "10 from 6." Semi-old but always dependable for good listening. "10 from 6" includes such Bad

Company hits as "Shooting Star" and the always popular "Feel like makin' Love." If you want your party to come to life ... start the music off with "Shooting Star," it's truly a winner! Bad Company but always good listening... ****.

Bad Company
10 from 6
Atlantic Records

What's New In SGO?

By Valerie Levin

Beaver College To Have Mascot

Good News!! Beaver will officially have a mascot by basketball season. The Gray Knight will be owned by SGO and the outside the cafe later this month. Make sure to vote for your favorite sketch.

Education Club Has Laminating Machine

Guess What?! The Education Club now has a laminating machine. it is located in the Curriculum Lab which is on the third floor of The Classroom Building. Anyone who needs something laminated can use the machine. The cost is only 25 cents per foot.

Leadership Office To Be Moved

The Leadership Office will no longer be located at the Health Center. It will now be in the SGO Office-which is located in the basement of Dilworth. For more information on leadership activities please contact Sharon Strauss.

Dance Marathon Cancelled

Unfortunately the dance marathon (November 10th) which was to benefit The American Liver Foundation has been cancelled. According to Penn State Ogontz's Student Government Association, there was a lack of involvement on the part of both Penn State and Beaver. Next year the SGA and SGO will try the idea again.



"Empty"

Love can be so many things...
Beautiful, sweet and everlasting.
Love can be so distant...
Ugly, bitter an temporary.

Good thing it's not that important
to you or you'd be very lonely.
Good thing you like being alone...

or you'd never get used to feeling this way.

Love can be many things
for many people...but for me it's patience and enduring and for you it's oblivious and non-existent.

Gina Range

The Rules For True Love

By Jody Terrell Wilkins

Love someone the way you want to love them,
But with gentleness not roughness.
With sincerity not falsity.
With assurance not jealousy.
With patience not persistence.
Because if you do your love will be greater.
With elegance no t vulgarity.
With charity not severity.
With concern not neglect.
With modesty not vanity.
Because if you do your love with be greater.

Yes greater.
Because your love will then be genuine.
And nothing can break it apart.
It's a guaranteed deal on a sure bet.
The only thing that can get in the way is yourself.
You have the power to make the difference.
Negative or positive, good or bad for your love in a relationship.
Take heed to my message and love someone the way you want to love them.

Cruise Ship Jobs

HIRING Men - Women. Summer/Year Round. PHOTOGRAPHERS, TOUR GUIDES, RECREATION PERSONNEL.
Excellent pay plus FREE travel. Caribbean, Hawaii, Bahamas, South Pacific, Mexico.
CALL NOW! Call refundable.
1-206-736-0775, Ext.

HILLEL CALENDAR

November

1) **Tuesday, November 7**
Meeting for anyone who is interested in helping to plan out next semesters calendar and who is interested in an officers position.
Meeting will be held in Sarah's and Cathy's room: 202 Thomas Hall. If you cannot attend please call them at x2329 or 572-1480.

2) **Saturday, November 11**
Hillels in Philadelphia (H.I.P.)

having a Citywide Dance Party.

"A Moment in Time"
at Beaver College in the Castle
from 9:00 to 1:00 a.m.
Cost is \$4.00.
Call Suzanne Rosin (x2325 or 576-7225) for more info.

3) **Tuesday, November 14**
Come and ASK THE RABBI any questions you have dealing with any issue that troubles you. If you do not have any questions, come and meet Rabbi Mort Levin any-

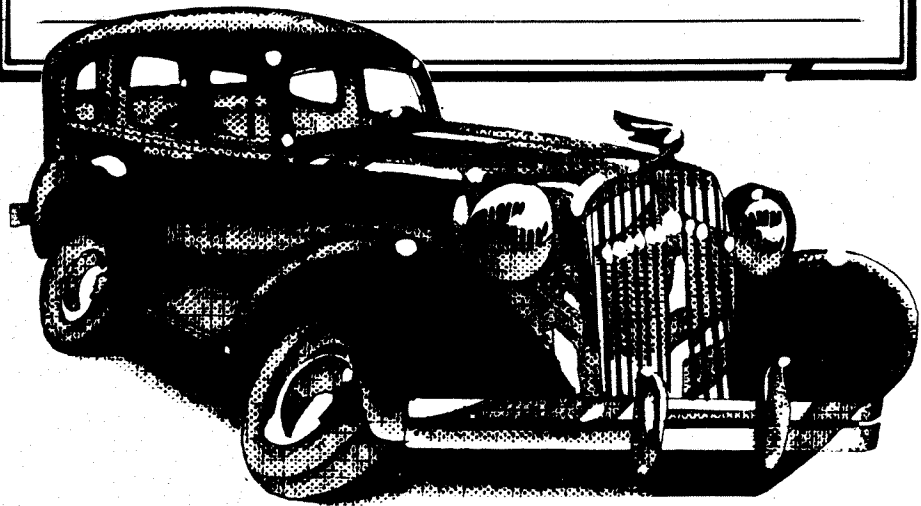
way 8:30 p.m. in the 2nd S. Kistler Lounge. Elections will be held.

4) **Friday, November 17**
SHABBAT DINNER.
Come share or see photos of our different trips to Israel 4:30 p.m. in the Castle. Call Erica Pollack (x2304) to R.S.V.P. by Friday, Nov. 11.

5) **Saturday, November 18**
Let's go HAYRIDE with Drexel University and HIP. Call Suzanne Rosin for more information.

The Back Page

S H O P T H R U THE CLASSIFIEDS



HELP WANTED

ATTENTION- Earn Money Reading Books! \$32,000/year income potential. Details. 1-602-838-8885 Ext. Bk 18829.

ATTENTION- Would you like to offer a Discover Credit Card? Are you available a few hours a week? If so, call 1-800-932-0528. Ext. 3. We will pay as much as \$10/hour. Only 10 positions available.

PERSONALS

HEY EVERYONE - YES, STRETCH AND I ARE ENGAGED! RE

Lonely? Need a Date? Meet that Special Someone Today! Call Datetime 1-405-366-6335.

AROUND CAMPUS

TOURGUIDES NEEDED- Become one of the elite. Beaver College's Admissions office is looking for those who are energetic, good communicators, and fun. To apply call Candice Powell x2310, Dave Pumphrey x2324, or Sharon Hardy x2354 for an application and interview.

DEVOTIONAL BOOKLETS- Over the past 26 years, I and hundreds of students, administrators, staff, and faculty have profited greatly through the reading of the devotional booklet, **Our Daily Bread**, and the monthly Bible study booklets, all of which have practical every day life applications. If you are interested in receiving these booklets quarterly, drop me a note at Box 732, x2993, or Boyer B316. You may cancel the option at any time. There is no charge for this nondenominational literature. Dr. Arthur Breyer, Dept. of Chemistry and Physics.

BEAVER COLLEGE RIDEBOARD- Planning a trip? Need a ride somewhere? Have a ride to offer? Drop a note at the SGO rideboard. The board is located outside the cafe by the Dilworth/Thomas entrance.

MEET A NEW FRIEND- Meet the American Language Academy Students. International club organizes a Conversation Partner Program with the International Students encouraging all Beaver students and faculty to get involved. Contact Nikki at 576-7626.

ON CAMPUS BIBLE STUDIES: As a adjunct to the Beaver Christian Fellowship programs, I am interested in ascertaining which students, staff faculty and administrators of Beaver College or the American Language Academy would be interested in participating in small group Bible Studies if convenient times could be arranged. If interested send your name address and phone# to Dr. Arthur Breyer, Box #732, x2993 or Boyer B316. If there is sufficient interest is found you will receive a followup.

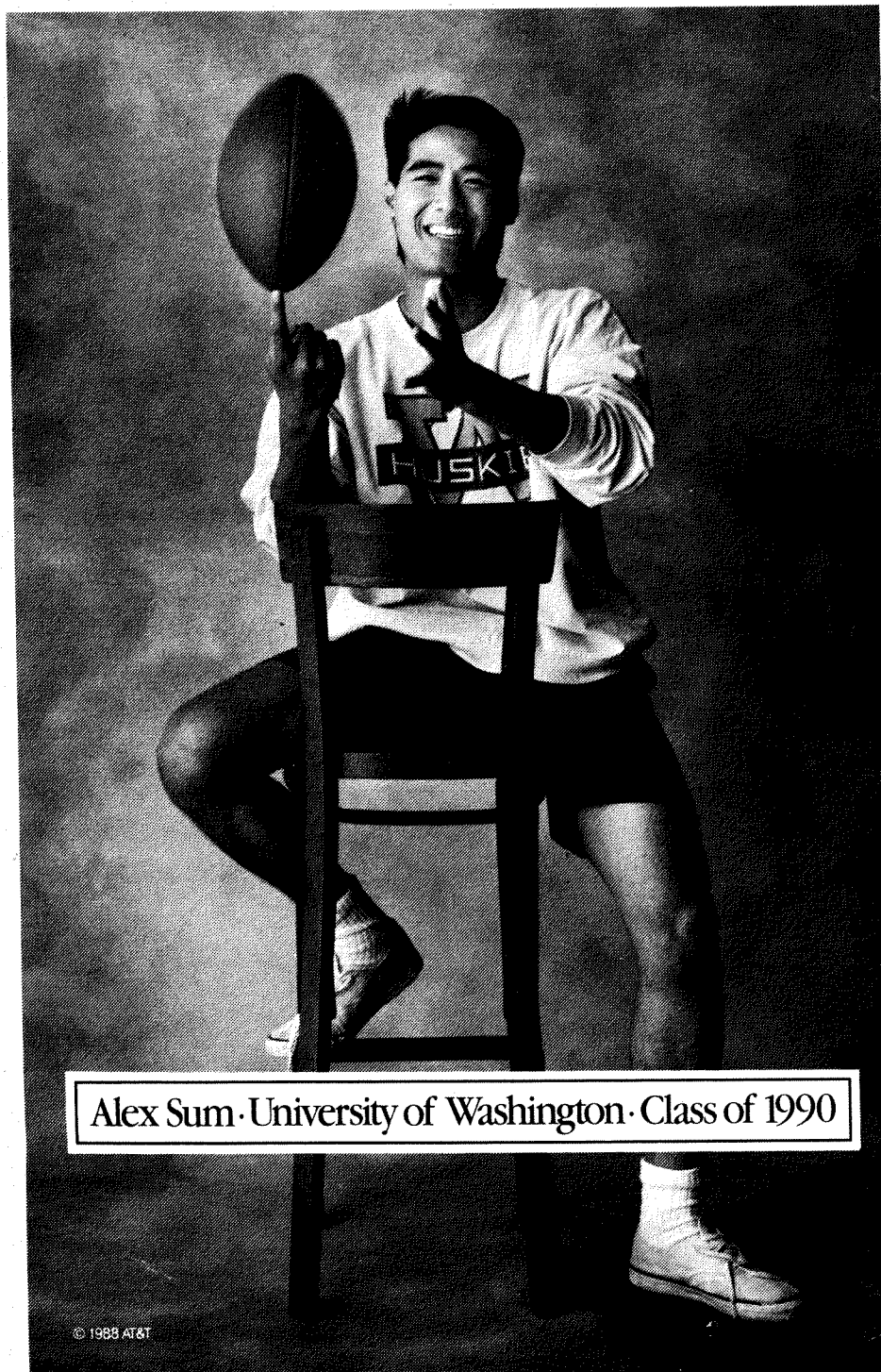
FOR SALE

For Sale- Government Homes from \$1 (U-Repair). Delinquent tax property. Repossessions. Call 1-602-838-885,8885, Ext. GH 18829.

For Sale- Small Blue Piece Sofa \$40 or Best Offer. Good Condition. A fine accent to any dorm room. For info. Call Nicci at X2356 or 572-1530.

For Sale- LIVING ROOM CHAIR! Very Comfortable! Free Delivery! \$15 or Best Offer. For more info. contact Kerry x2357 or 572-1658.

“I wasn't rubbing it in—I just wanted Eddie to know the score of last night's game.”



Alex Sum · University of Washington · Class of 1990

Go ahead and gloat. You can rub it in all the way to Chicago with AT&T Long Distance Service. Besides, your best friend Eddie was the one who said your team could never win three straight.

So give him a call. It costs a lot less than you think to let him know who's headed for the Playoffs. Reach out and touch someone.®

If you'd like to know more about AT&T products and services, like International Calling and the AT&T Card, call us at 1 800 222-0300.



AT&T
The right choice.