



Middle States Exits With Many Questions

By David Pumphrey

After two years of exploring and evaluating, the Middle States Association (MSA) delivered its exit interview in the Castle's Rose Room March 15, 1989. This interview was prepared by the MSA evaluation team consisting of college administrators from various colleges in the Middle States area. It is required that Beaver College be evaluated every ten years in order to remain accredited.

The report was presented by Sam Magill, who chaired the evaluation team and is president of Monmouth College in Monmouth, New Jersey. Their report will be submitted to Beaver College and the Commission On Higher Education. Within two weeks, the first draft will be returned to Beaver College for factual accuracy only, and President Bette Landman returns it to Sam Magill. Beaver will then prepare a response to the Commission on Higher Education, and Sam Magill will also prepare a brief with a recommendation for the Commission on Higher Education to consider. The meeting is on June 22, 1989.

Magill began the report by listing Beaver College's strengths. First, Magill men-

tioned Beaver's faculty, he said they are committed and loyal, care about the students, and are involved in the curriculum and governance issues. Magill continued with the relationship between the faculty and students, and how important it is to both parties. Student loyalty toward the College is high, the students are above average and attend Beaver because of its friendly atmosphere. Dedication of the College staff is high. The administration is addressing the College's problems and the Board of Trustees are becoming more aware of the problems and are building for fiscal growth. Magill concluded by adding comments on the attractiveness of the campus and Beaver's healthy trends for support.

Despite these pluses, Beaver has several problem areas, and according to the MSA report they are all related to money. Magill stressed that Beaver College's most serious problem is its fiscal health. There is no quick fixes to this problem and there is a serious absence of reserve funds. The College can not afford any substantial deficits. Finally, Magill stated that the College must know where it is going and do it.

The report includes eight major concerns that need attention as soon as possible. The MSA report also includes several possible solutions for the various problems.

The mission of the College brings quite a bit of debate. It is unclear how liberal majors and professional majors relate and if they can co-exist at this school. Possible solution include: develop a philosophical framework to bridge the gap between the two; our label as a comprehensive college does provide more flexibility especially for the graduate school; be cautious in changing the students we are targeting as possible students; and develop a few academic programs known for their strengths; this will give the major and the College more distinction, more of an edge.

Planning for the College is a must, especially in the area of budgeting, and can be quite useful. Beaver must develop a three year budget prediction, as well as a short and long term revenue enhancement strategy. For example, strengthen the summer school and winterum programs for possible enrollment expansion.

The school needs better management when dealing with enrollment. At present,

student enrollment is handled through several different offices, including the Admissions Office, Graduate Office, and the Evening College Office. Solutions? Design an enrollment Task Force with a new Associate Dean as Chairperson. This task force would oversee all enrollment activities within the College. Also, hire a full time researcher in association with enrollment.

According to the MSA report, the College's immediate future is a sore spot. Beaver's plans are developed on a single scenario and do not consider the possibility of various futures. To solve this, the school must consider alternative futures while maintaining its mission.

Beaver's academic programs are rather inconsistent. The courses have low academic expectations and a problem exists with the 3 to 4 credit courses. Solving this problem means resolving the 3-4 credit issue and expanding summer and winterum offerings.

The quality of campus life, a concern of many of Beaver's students, was also a concern of the MSA evaluators. Social interaction is a major concern. There is a lack of social and recreational activities, and a new sports complex could be in the future. The sports complex should include an activity center. Until the complex is built, not necessarily a must for the

Cont'd on page 2

Beaver College Students to Compete in National Business Games

Glenside, PA - Beaver College will send a team of four business students to participate in the 24th Annual International Collegiate Business Policy Game Competition sponsored by the University of Nevada at Reno from March 29 to April 1.

Students will work in a decision making situation in which they manage an imaginary company in competition with student teams from other colleges.

According to R.C. Barnes, assistant dean of the business college at the University of Nevada and executive director of the games, the competition provides a "real world" application of academic skills in business.

"By simulating a competitive market typical of U.S. industry, the games teach students about realistic corporate level decision-making far beyond the textbook," said Barnes. "Our games not only give the participants a realistic simulation of the business environment, they give them all of the pressure of competition as well."

"The format is very similar to what we do in our sen-

ior level business policy course," says Dr. William Briggs, chairman of the department of business administration and economics at Beaver College.

Representing Beaver College in the competition will be Seniors, Jennifer Sehorn of Bordentown, N.J., Tracee Koch of Huntingdon Valley, Christine Jacobs of Bensalem and Junior, Marybeth Lampe of Wyncote.



Heather Nether, Susan Dykes, Brian Engemann, and Dave Pumphrey call Alumni of Beaver College for the Annual Phona thon to raise money for our school.



GUMBY?

Bridging the Generation Gap

By Mark Mensch

How many times have you, the undergraduates, been walking through the Chat and noticed someone who appeared in their 40's eating their dinner, usually alone? How many times has a Continuing Education student been in your class and you never talked or gave them notice? Or you wanted to make friends with them, but didn't know how to do it? And you CE's, how many times have you been surrounded by so many younger kids and felt like you were

about to drown in your own anxieties about the younger generation? Have you ever wished there was something you could do about it? Some way you could learn to bridge the generation gap?

On Monday, April 3rd, between 3 and 5 p.m. in the Rose room of the Castle, you can learn just that. But this won't be some stupid lecture about giving everyone a chance. You will witness the many experiences first hand! You will see young people trying to deal with the older generation. This is the aim

of the Full Circle Theatre Group.

Full Circle is an improvisational acting troupe that is directed by our very own Ellen Kaplan. The group's main aim is to disprove the various stereotypes of the different age groups and to examine the issues of aging and the relationship between young and old. They will show how to change a basically age-segregated place, such as Beaver, into a society that recognizes the various strengths and contributions

that can be made by the various ages.

The troupe will perform three or four skits, with a question and answer session after each one. However, this is no ordinary session. The actors remain in their roles during this and answer the questions as if they were actually the characters that you watched just a moment before. Ellen Kaplan will help get an active audience participation going on between the actors and audience. This is not a play, it is

an improv session which asks the audience to participate along with them. There is no script, so the action can go in any direction at any time. This will be a very entertaining time as well as informative.

So if you have ever wondered how you can become better at ease with the other generation, this session is for you. It will teach you that they have many things to offer you if you just ask, and that the members of the other age group are people too.

Cont'd from page 1

near future, more intensive programming should take place. The school must also hire a "green" dean, someone without preconceived ideas about how things should be run.

Faculty morale is extremely low. The faculty is frustrated and needs loyalty from the college. The college needs to give the faculty more compensation, including a plan which will not be promised, then broken. Solutions to this problem include: commitments made by the college to the faculty being honored, and administration needs to communicate more effectively.

The Center for Education Abroad (CEA) has possibilities and yet still holds its share of problems. The CEA's budget must be restruc-

tured so that any monetary problems will not burden the College financially. The CEA must have a balanced budget. Finally, expanding to other countries and offering the program to graduate students would most likely help the program.

There are several secondary problems mentioned at the exit interview. These problems were also accompanied by solutions.

The curriculum was first mentioned, many programs which required a great deal of money are lacking due to no money for the purchase of equipment, for example, the Business and Biology departments. To solve this, the dean must review the budgets. The school might look at combining some of the smaller departments into one

Humanities or Social Science department. Women and minorities need to be promoted within the faculty. Admissions and Financial Aids work is mostly done passively and the MSA team questioned the number employed in the admission office.

When dealing with student services, the College must reassess its resources. Suggestions included a possible out-patient clinic in place of our current Health Center, and a reduction in the number of athletic teams sponsored by the College, according to the MSA team, we don't have a student body large enough to warrant so many organizations on campus.

Magill reported the Beaver's library underutilized by students and faculty. The

collection, however, is not adequate. The library must increase its acquisition of money and faculty might require students to visit the library for class assignments.

The Administration is understaffed and the College's governance is plagued by extensive involvement. There is excessive faculty involved in the governance of the college except in critical areas. All Trustee meetings should include a representative from every department except in the most confidential matters.

The MSA team suggested raising tuition for part time students in order to help the auxiliary services to break even.

Beaver College has an extreme problem with lack of space. The administrative

offices are in poor locations and a space utilization study should be commissioned. According to the report, there are extraordinary deferred maintenance problems on the campus.

Finally, a problem lies in Beaver's Institutional Advancement. The College must improve fund raising and remember that significant returns come only after proper techniques. The Board should adopt realistic goals for capital campaign and follow through, and the annual fund must continue to grow.

In conclusion, the information above was obtained by Karen Verbeke, who attended the March 15, 1989 meeting. The Tower appreciates her help in our effort to cover this story.

This summer, we've saved a spot for you.

Our flexible summer schedule makes it easy to take a course at La Salle University.

- Regular sessions are offered day and evening from May 22 to June 29 and again from July 10 to August 17.
- A May session is scheduled from May 15 to June 9.
- Our mid-summer session runs from June 12 to July 20.
- La Salle's innovative six-two sessions (May 22 to July 20) provide large blocks of free time for in-depth reading and study.

For more information, call (215) LA SALLE or write to the Evening Division, La Salle University, Philadelphia, PA 19141.



La Salle University



Dear Editor

Dear Shades pulled,

Why don't you pull your mouth shut as well as your blinds. So you and your friends claim the "younger" security guard is a peeping Tom. The younger security guard, is that the one that walks around in the blue uniform with two legs, a nose and of course two curious eye balls? If this claim is true, what evidence do you have? How often does he do this and in which dorms? And why didn't you report it like the young adult you think you are? Why didn't you go to the chief of security? Why didn't you address this issue to the college where something could be done if this accusation is true? And if this statement is true, I agree with you, it should be taken care of immediately but until you shed light on the truth think of what you have done.

Think of what the ripples of repercussion are going to do. He may lose his job. How is he supposed to pay rent, gas, and food? And when he needs to explain reasons for leaving previous job, ACCUSED OF BEING A PEEPING TOM. Who wants to hire an accused pervert? Think of his feelings and the embarrassment you've caused.

And you and your friends have heard about this peeper where, in the bathroom? At a Murphy dance? In the cafeteria at a table jammed elbow to elbow where idle talk is usually exchanged which is nothing new around here? Do you realize how strong your claim is? And you yourself titled it a rumor. Do you realize your editorial is a pitiful bowl of oatmeal? It's so vague. So what are you trying to say? There's a peeping Tom here? And if there is, what exactly is a poorly written, nebulous editorial going to do but give you and your friends a vacuous sense of accomplishment, you doer of good you. (well it does give me something to write about so perhaps all is not lost) As I mentioned before, if this is true, you are right, something should be done. Adult action should be taken, which means going to the proper authorities. Before you have the courage to sensationalize a rumor and then anonymously sign it you should consider the power of publication and its consequences. And don't flatter yourselves, how do you know he'd be interested in adolescent bodies anyway. God, will someone write an editorial about something that will academically stimulate this campus in a good way. Our editorial section has turned into an immature, whining column.

Signed,
Heidi Volpe

Dear Editor,

I am not happy with our security system. I know that they do not meet the standards of a number of students, including my own. I have become more and more dissatisfied with them through experience. For example, on one of the nights they were searching for the prowler last semester, I was walking from Thomas to Dilworth with a friend. A security guard was talking into his radio saying "I'm headed for Thomas now." Right after that, he turned to us and asked nonchalantly "Where's Thomas?" It's quite frightening to see that the very people who are supposed to be protecting us are not familiar with the buildings on campus! (There aren't that many!) How long would it take them to actually get to a building if they were called there for an emergency?

I am aware that they caught the prowler, but I've seen them at the attempt.

It was about 3 to 4 in the morning when my roommate and I were getting ready for bed. We heard loud noises from the other end of the hallway and opened the door to investigate. The stairwell door opened and several security guards walked down our hallway. Now, if this prowler supposedly ran from loud noises, why were their voices raised, and why were they banging the walls with their flashlights? If they wanted to catch this man, why didn't they also break up into small groups and keep in touch by radio instead of walking around like a posse?

This gaggle of "social security guards" (as they are often referred to) proceeded to wake up other people on our hall. As my roommate and I stood in awe of the simplicity of their strategy, each and everyone of them passed our door ogling us in our night shirts!

After they left Thomas, they congregated in the courtyard out front and continued to speak and joke in a loud tone. Since the weather was warm, our windows were open and their voices carried straight into our bedroom.

I know that Beaver has recently hired a few more guards and has issued identification cards with photos of them in uniform. But did they train these new men? On one occasion, one of these new guards didn't lock all of the doors he was supposed to. His job must have been done so poorly because two security guards ran his routine over to double check everything. By the tone of the later two guards, they apparently excused him for his carelessness because it was his "first time." This is

not what I consider a good first impression!

On another occasion, I was walking to Heinz at 10:00 in the morning and the front doors were locked.

How many times have you gone to the mail room only to find the doors locked? How hard is it for the guard on duty to remember the keys BEFORE he moseies to the mail room? Being there on time would just be asking too much.

I've also been told by another concerned student that security has been suspected of playing pool at 3 in the morning in the recreation room. It couldn't be students I was told, because they don't have the keys to relock the room. Do our security guards get paid to play pool?

Security tries, but I feel they don't try hard enough. I don't feel it is too time consuming or economically straining to improve some of the methods they use.

It's easy to overlook minor errors but when they get to be too numerous to count on one hand, people begin to wonder.

Sincerely,
Judi Barnard

Dear Editor,

I don't understand why some students even bother going to class. The students I am referring to sit in the back of the room and talk during the entire lecture; then, when they are a bit lost or have absolutely no idea what is going on, because they haven't been paying attention, they ask questions that are often repetitive and sometimes irrelevant.

I would be a complete hypocrite if I said I never talked in class; I think that everyone does, at least once in a while. But to talk during the entire class is rude to other students, not to mention the teachers. Unfortunately, the teachers I have choose to ignore these people. Maybe they think the problem will go away by itself. But, I doubt it. It seems that all these students want is an easy A, without any of the effort or responsibility associated with the grade. If you are one of these people, please do me and other students like me a big favor; either stop talking so much in class or stay home and just read the book.

Sincerely,
Trying to get
an education

Article Information

Below are some facts about articles that you need to know if you're planning to write an article, letter to the editor, classified, artwork, club corner, etc.

Anything submitted to the Tower must be double-spaced, typed, at least 60 lines, and 36 characters on a line (margins being 10 for the left and 46 for the right). Letters to the editor must include the name of the person submitting it, although the name will not be printed unless permission is given.

The deadline for submitting anything for the next issue of The Tower is Thursday, April 6, 1989. You can send them to The Tower via campus mail or directly to an editor. All articles will be greatly appreciated you'll get to see your name in print!

How Do You Feel Towards Snow and Ice?

By Joel Rosen

It was brought to my attention, during the last snow storm, that many students were unhappy with the way the school plowed the campus. When I encountered a problem with the ice and high mounds of snow myself, I decided to find out what we, the student body, can do to rectify this situation before the next snow storm.

After talking with Bob Edwards, Mary Nicolson and several students, I determined that there are things we can do to help the matter at hand.

The most efficient way to plow the campus involves moving all the cars out of the way; then, the maintenance crew can make even paths across the lots. In order to accomplish this, we would need every persons' cooperation. Mr. Edwards feels he will not be able to acquire this cooperation, and I do not see why the student body cannot take ten minutes out of their day to comply with this simple request.

Another suggestion came from Ms. Nicholson. She suggested making a shovel available in each dorm for

the use of students who wished to flatten the mounds of snow surrounding their cars. The best way to actually reposition the snow would be to do it while the snow is still soft. Mr. Edwards thought the idea was terrific and showed enthusiasm to try it out for the next snow inconvenience. Along with shovelling around your vehicles, how about cleaning them off? While it's still snowing or shortly after it stops, ride your car forwards and backwards to make tracks for you to drive on after it begins to freeze.



David Pumphrey
Editor-in-Chief

EDITORS

News Editor..... Beth Shapiro
Viewpoints Editor..... Ingrid Riegler
Features Editor..... Sharon Hardy
Sports Editor..... Karen Rossi
Copy Editor..... Kristin Ellis
Business Manager..... Karen Leong
Classified Manager..... Kerry Costello

LAYOUT

Layout Editor..... Stacie Pumphrey
Layout Editor..... Kim Travers
Layout Staff..... Tori Hickox

PHOTOGRAPHY

Photo Editor..... Brian Engemann
Photo Editor..... Karen Leong

Features

Let's Go To London...or somewhere else!

If you have been reading your mail this week, you might well have been one of the lucky students who received letters inviting them to study in London next fall. These letters were sent to all sophomores and juniors with a grade point average of 2.8 or better.

Since the Beaver College Center for Education Abroad is one of the oldest and certainly one of the largest and best-known study abroad services in the United States, doesn't it make sense for them to encourage Beaver students to take advantage of the opportunities they offer? You bet it does!

The special arrangements for Beaver students allow them to enroll in the fall London Semester or Humanities Program for the cost of tuition and room here on campus plus the cost of round-trip air fare. And all of the financial aid for which the student is normally eligible can be applied to the program fee.

The London Semester was chosen as the basic program offering best able to meet the academic needs of any Beaver student, regardless of major. City of London Polytechnic, where the program

Surrey and York being just a few. Qualified Beaver students can do this, too, applying the guaranteed study abroad fee savings based on the differential between the cost of Beaver room and tuition and the fall London Semester fee without air fare.

This saving is also extended to Beaver students who choose study in Ireland, where there are year-abroad arrangements in Cork, Dublin, Galway, Limerick and Maynooth, and to those who choose a semester in Vienna - another semester program incorporating field study trips as part of the program fee coverage.

So if you discarded your mail without having read it carefully, go up to the Center for Education Abroad offices on the second floor of the castle and get another packet. Freshmen should make this trip to get an idea of what might be in store for them at this time next year.

By the way, if you are a sophomore or a junior who just missed the 2.8 g.p.a. cutoff, don't despair - make an appointment to see Dr. Belcher, the Beaver College study abroad advisor, or go up to the castle and talk to Dr. Wood, the London Se-

mester program coordinator. It may just be possible that something could be worked out for you, too.

is based, grants degrees in the social and natural sciences, but from the inception of this program in 1965, has made provision for arts and humanities students through a specially selected group of advanced supplementary courses in art history, history, literature and theatre studies. These courses are taught by British faculty who designed their syllabi

to incorporate the rich cultural resources of London to such a successful degree that they generated an additional program specifically for humanities students.

The London Humanities Semester is administered under the auspices of City of London Polytechnic and offers a special group of courses which link British and European cultural themes in an interdisciplinary way. These courses rely even more heavily on local resources, in Britain and in Europe, to en-

rich the syllabi. The fall semester includes a field study trip to Paris and spring semester students go to Berlin - all travel and hotels included in the program fee!

But there is even more good news. Large numbers of American undergraduates also use the Beaver College Center for Education Abroad to enroll directly at University of London colleges and at well-known British universities outside of London - Aberdeen, Bristol, Edinburgh, Essex, Southampton, Surrey and York being just a few. Qualified Beaver students can do this, too, applying the guaranteed study abroad fee savings based on the differential between the cost of Beaver room and tuition and the fall London Semester fee without air fare.

This saving is also extended to Beaver students who choose study in Ireland, where there are year-abroad arrangements in Cork, Dublin, Galway, Limerick and Maynooth, and to those who choose a semester in Vienna - another semester program incorporating field study trips as part of the program fee coverage.

So if you discarded your mail without having read it carefully, go up to the Center for Education Abroad offices on the second floor of the castle and get another packet. Freshmen should make this trip to get an idea of what might be in store for them at this time next year.

By the way, if you are a sophomore or a junior who just missed the 2.8 g.p.a. cutoff, don't despair - make an appointment to see Dr. Belcher, the Beaver College study abroad advisor, or go up to the castle and talk to Dr. Wood, the London Semester program coordinator. It may just be possible that something could be worked out for you, too.



Career Corner Are Temp Agencies for You?

By Veronica Kelly

Many college students who need jobs don't go job-hunting. They imagine that their irregular course schedules prevent them from keeping regular jobs. The fact is that you can get the business experience you want, when you want it - at a Temp Agency. These temporary employment services will assign you to clerical positions at various offices, according to what days and hours you're available.

Before you decide whether this option is for you, here are some pros and cons to consider. They were provided by Michele Dvorak, a Rutgers grad who's been using Temp Agencies for about five years.

One obvious advantage of a Temp Agency is that it gives you the chance to pick up business experience and office skills, sometimes even free word-processing courses. However, it doesn't offer the insurance coverage or medical benefits of a steady office job.

Working at a Temp Agency gives you the opportunity to learn about different companies and see what kinds of work they do. The problem is the work that offices give

you, as a temp, to do, is usually the work that none of the permanent employees want to get stuck with. That doesn't mean that you can't get any fun jobs through an agency, because you can; the flip side is that you can wind up with some awful jobs too. Luckily, if you don't like a position you can request that the agency transfer you.

As I've said, you can also request the days and hours you want to work; on the other hand, sometimes when you need a job, they might not have anything open for you at the time.

There are also some "interpersonal" pros and cons involved. For instance, working in different offices lets you network and make career contacts, and maybe make new friends. However, many employees won't bother to be friendly with a temp because they know that person isn't there to stay. Other employees expect you to be as efficient as the more experienced person you're placing. The excitement of an interesting variety of new places and faces is sometimes marred by the stress of walking into unfamiliar situations all the time.

Do the pros outweigh the cons? You decide.

BEAVER COLLEGE HEALTH FAIR

APRIL 11th 10AM - 3PM

Location - CHAT

COME "HEALTH" YOURSELF

Many exciting, informative, fun topics.....

i.e. Diabetes Screening

Cholesterol Screening

Abington Mem. Hospital Staff

Blood Pressure Screening

Ruck Health Center Staff

Self Defense

American Karate Studio

Skinny Delights

FREE SAMPLES !!

Cosmetic Make Cover

"Color Me" expert

MUCH MUCH MORE.....STOP IN !!

Viewpoints

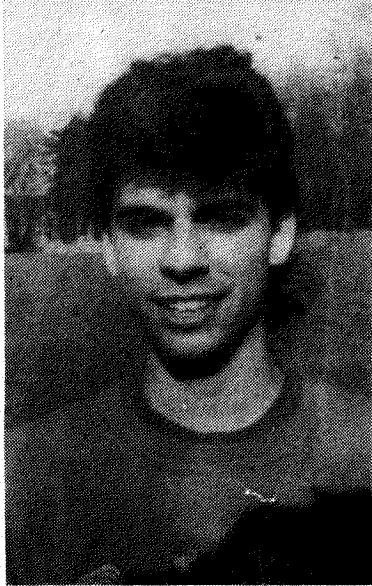
Question & Answers

"What Kind of Condoms would you Prefer in the Machines?"

By Brian Engemann



Kathy Marsh
Senior
"Kandy-condoms."



Joe Madia
Junior
"Ramseys the only one."



Gretchen Hauselt
Senior
Flavored and colored."



Jen Heath
Freshman
"Anything but PRIME."



Steph Batter
Freshman
"TROJANS!"

Faculty Exhibition In The Art Gallery

By Susan Caulton and
Stacie Pumphrey

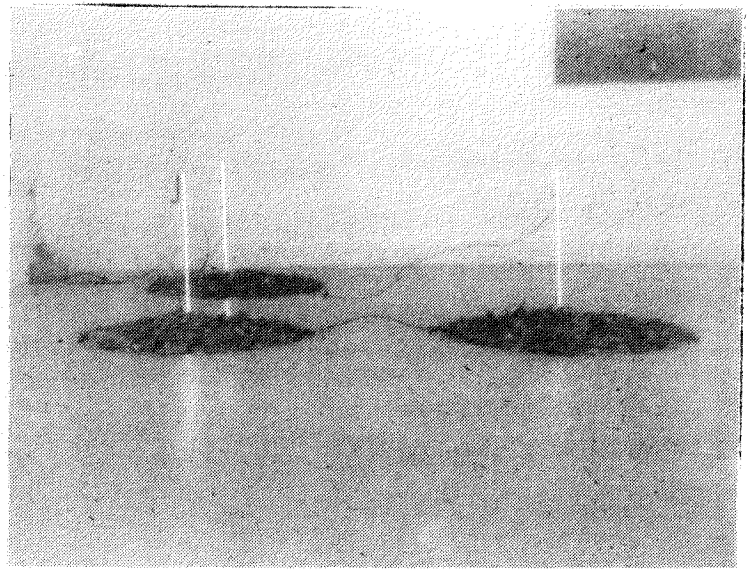
The Beaver College Art Gallery displayed the Faculty Exhibition March 8 through March 26. The very successful opening was held on March 8th. The gallery director, Paula Marincola did a fantastic job coordinating the show. There were many people in attendance who seemed to enjoy the fa-

culty work. The faculty members who displayed work in the exhibition included: Alma Alabilikian, Greg Blue, Celeste Callaghan, Judith Heep, Steve Hirsch, Dennis Kuronen, Mary Ella Marra, Robert Mauro, Rebecca Michael, Genell Miller, Myra Mimlitch, Mary Lou Stewart, Vida and Paula Winokur.

This exhibition gave stu-

dents the opportunity to see their professors' work. The work was without a doubt, very impressive. Every department was well represented in the show.

A special thanks goes out to Paula Marincola for organizing this event. The show was a great success. For all the art majors on campus, we hope you had a good time critiquing the people who critique you!



Looking for a student organization that would like to make \$500-1000, as a **FUND RAISER**. For a one-week on campus marketing project. Must be organized and hard working. Call Gina or Cheryl at 1-800-592-2121.

Lighting on Campus

By Ingrid Riegler

Many students are concerned with the lack of lighting on campus. During December in a report to the board of Trustees, Beth Shapiro stated that there is a need for more lighting. The areas that were mentioned were the back door to the Heinz Dormitory and also the path that leads up to the Murphy Hall along the side of Spruance.

According to Bob Edwards, the Plant Manager, the process of replacing old lights and installing new ones is an on-going process. After becoming aware of Beth's report Mr. Edwards stayed late one night on campus to survey the spots that were reported as being in need of light. After doing so, Mr. Edwards installed a new light above the back door of Heinz Dormitory and also along the path of the Castle and

the Health Center leading up to Murphy Hall. The lack of lighting on the other path leading to Murphy Hall will not be taken care of yet because of the lack of money to do so. According to Mr. Edwards, \$10,000 was spent on new bathrooms in the Heinz Dormitory. New light posts cost \$1,800 and right now the money is not available to install new lights. Mr. Edwards stated that the areas that serve as a security problem have been taken care of. Also, in comparison to how well the area around the Classroom Building is lit the rest of the campus looks dark.

Eventually all of the lighting on campus will be replaced, but for now students should follow the paths that are well lit. If it takes a few extra minutes to get where you are going, so what? You will be safe!

**Trivia
Corner
Winner
David Weidmeir**

- 1) 26 RAS & CAs
- 2) S.A.C. Student Activity Center located in the basement of Dilworth.
- 3) Heinz Hall has two people with identical birthdates.
- 4) The In Crowd was filmed at Cheltenham High School across Easton Road.
- 5) Larry Roper replaced last years Dean of Students.

Woodstock X S.P.B.

Woodstock X is right around the corner! The Student Programming Board has been working on Woodstock since August - listening to band after band, consulting agents, and trying to get the best deals possible. SPB started early so they could take into consideration the student's view and opinions: How they felt about past Woodstocks, What would they like to see and hear this year, Etc., Etc.

A survey was taken during a few lunch and dinners last semester to get a good idea of the music you wanted to

hear. SPB took the surveys very seriously and we hired bands who played music to suit your choices. (By the way, "The Dead" and "Springsteen" tied each with 37% of the votes.) The request most honored was to bring back the music of the original Woodstock (it was 20 years ago this year). SPB feels that they have succeeded to the best of their funds.

We have cut the number of bands this year to three. We've noticed from previous years that by the time the fourth band appeared every-

one was horizontal (asleep or passed out) so we spent more money on better bands this year, who will play for a longer period of time so there will be less breaks and more music.

We again have mugs for the first 250 people plus we have T-shirts to be sold before and during Woodstock. The date is April 29th and tickets will be sold "in advance" \$6.00 for Beaver, \$8.00 for Non-Beaver. "At the door" \$8.00 for Beaver and \$10.00 for Non-Beaver. Sorry NO charging. Rain-date is April 30th, Sunday.

Features

SGO-Read What's New and Exciting

By Joel Rosen

The Senate has continued to be as busy as ever. At the March 7th meeting, one senator brought up the idea of formalizing procedures at meetings. After some discussion, we determined that an informal atmosphere let the senators feel less hesitant and able to speak freely about matters at hand.

In lieu of meetings for most of the semester, club officers have decided to create a newsletter, which will serve as an information vehicle.

Some other topics directly pertained to the student body. There has been a prob-

lem with a shortage of beverages in the cafeteria. The dining hall staff would appreciate students not filling large containers during meals. If you would like to fill an extra large cup, contact Jeff, Bennie or Nick for permission. Moreover, we are hearing complaints of students parking their cars over the painted lines. This causes hassles for all concerned.

If you have noticed brighter lights on campus, it's not your imagination. The college is in the process of installing additional lights around campus, but bare with them because each lamp

costs between \$1800 and \$2000 to install. Finally, the WBVR amended its constitution to contend with alcohol, drugs, cigarette smoking and the number of guests allowed in the studio at one time. Also, the Celtic Club will be accepted providing they modify their constitution to accommodate certain legislative and executive policies.

In a recent Tower article, one of our security guards was accused of acting unprofessionally. This situation had previously stirred up a lot of discussion among the senators. Upon looking into this

problem, we learned that, according to Bob Edwards and Joe Calogero, this guard has a clean record and is doing a good job. The executive board will continue to look into the controversy and is working with Student Affairs.

On April 9th, there will be a women's march through Washington, D.C. Everyone men and women- are welcomed. If we can get enough people, we will probably be able to supply transportation.

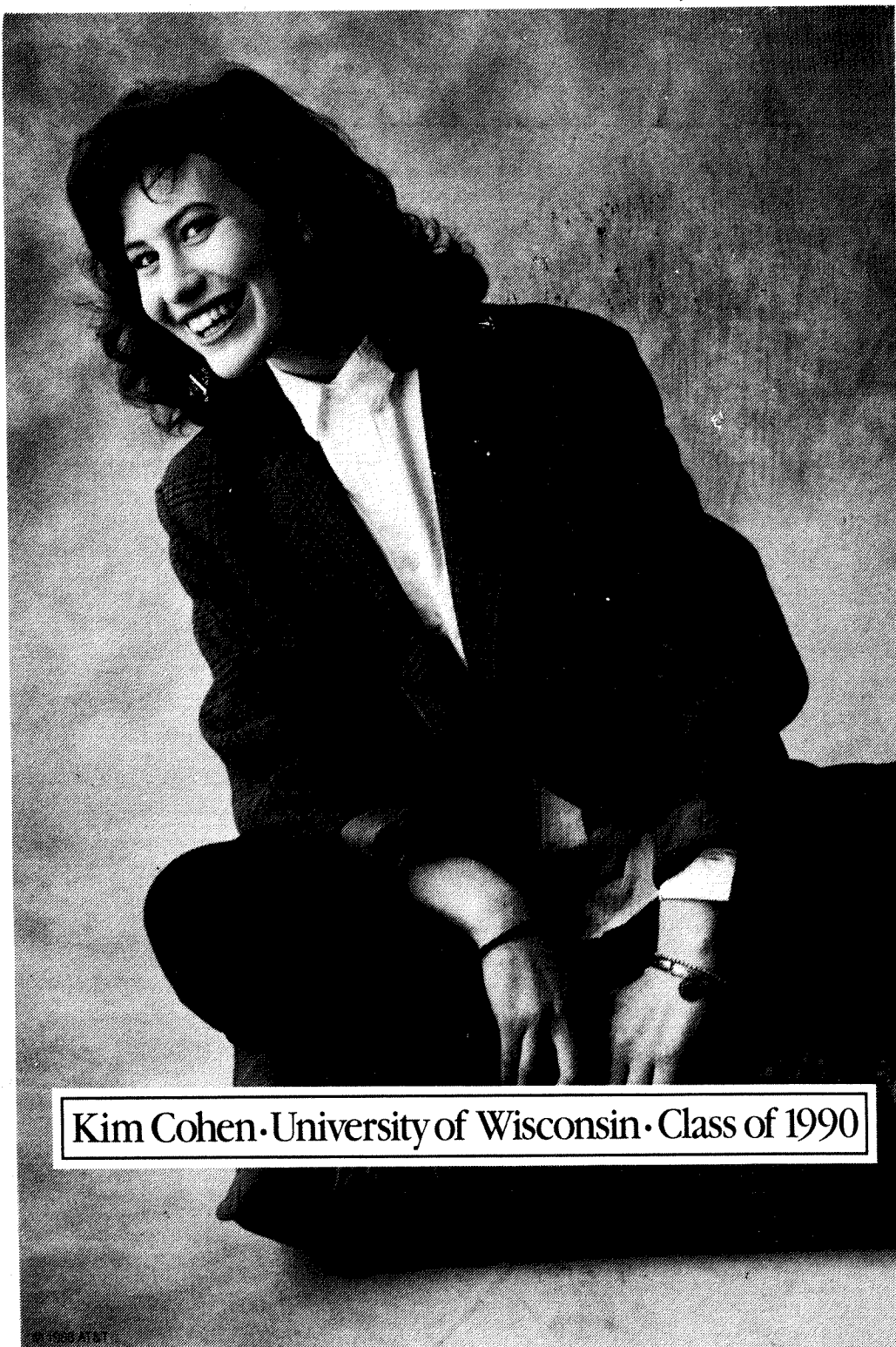
On April 18th, James Erwin, an astronaut, will be in the SAC at 4:00 and in Stit-

ler at 7:30 to share some space adventures with us. Please note the date and try to attend.

All are encouraged to attend the SGO meetings. If there is one you cannot make, speak to your senator about ideas, comments and suggestions for improving college life. Talk to us, or we will not know what's going on. The meetings are held on Tuesdays at 4:10 in Boyer Calhoun Amphitheater. This is our schedule:

April 11, April 25 & May 9. Remember, we welcome your input.

“No matter how bad they are, Grandma loves to hear the latest jokes.”



Kim Cohen • University of Wisconsin • Class of 1990

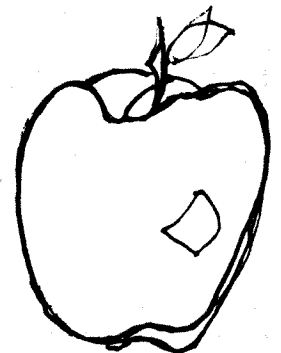
You miss her sparkling sense of humor. She misses you and your jokes. Even the bad ones. That's one good reason to call long distance. AT&T Long Distance Service is another good reason. Because it costs less than you think to hear your grandmother start to giggle before you even get to the punch line.

So whenever you miss her laughter, bring a smile to her face with AT&T. Reach out and touch someone®

If you'd like to know more about AT&T products and services, like the AT&T Card, call us at 1 800 222-0300.



The right choice.



Health Fair

By Susan Dykes

Anyone interested in improving their health should mark April 11 in their calendar. This is the date of the Annual Health Fair to be held 10-3 in the Chat. This annual event is sponsored by the Health Center Nursing Staff.

There will be numerous tests and screenings available to the Beaver College community which are all free of charge. The Cholesterol Test is the only test that costs. The fee for this is \$8.00. There will be diabetic testing and Blood Pressure screening available as well as an opportunity to take a Biodot stress test. There will also be information about being a part of the Donor Program which allows you to donate your organs. Free samples of Skinny Delights, a Healthy Snack food will be given out. Karate and Self-Defense will be taught. Colorectal Cancer Screening will also be available. Free color analysis and a Nutrition Program will finish out the afternoon. As you can see, it will be a very active and educational day. Support the Health Center Nursing Staff and attend this one day event. The day will conclude with the Health Fair Fun Run. Learn how to improve your health and attend.

Sports Notes

Beaver's men's baseball team began their practicing before break and are ready to start their season. There were 24 players who signed up for the team. The team is going to be playing in the NAIA league for the first time. This is a very competitive league and the guys are looking forward to it. Their coach is Bob Bendig and their assistant coach is Joe Gallagher Sr. They're still playing at Russell Elliot Field and they'll play 19 games plus a few pre-season games with Temple. Look for more on the team in the next issue.

It's almost time for volley-

ball intramurals so get ready! The indoor hockey league was very successful and now everyone's ready for some outdoor fun!

Yes, it's true - Beaver's infamous/famous soccer field will be leveled for next year's soccer season! The outdoor basketball courts are also going to be spruced up so be watching for that!

Did you know that Beaver has its own whirlpool?? No, it's not a jacuzzi but it is a whirlpool that was donated by the PT department and it's now in Murphy. If you're interested just give the athletic department a call and make an appointment.

Women's sports here at Beaver have started and the lacrosse team and softball team has started practicing and are ready to go. Watch for an article in the next issue!

Commitment is the word that best describes Beaver's '88-'89 men's basketball team. According to their coach, Bob Bendig, they had a "very, very successful year." Their league record was 10-18 and they had four preseason wins. Coach Bendig said that there was a "great turnout for practices" and the "team dedication and team enthusiasm was there." Everyone had an ex-

cellent year. Brian Thompson ended his career with 2506 points which is quite an accomplishment. The Washington Generals, who play against the Harlem Globetrotters have given Brian the go-ahead to play with their team after graduation and the Harlem Globetrotters invited Brian to try out for their team. Junior Mike Giuliani also had an excellent year. Mike led in team scoring and he was also the leader in the NAIA for rebounds. The team will be losing only five seniors including Brian. They are Paul Lowry, Shoey, Bill Welsh

and Cisco Serrano. Needless to say the guys have been a great asset to the team and will be missed. The other players that have contributed a great deal and will be returning are sophomores Mike Hansen, Ray Johnson, and Brian Gallagher and juniors Glen Tener, Drew Bradley, Rob Scott, Gregg Rosenfeld, Nemo, and Bonzo. The coaches, Marty Palmer and Jeff DuBois plus Managers Valerie Francesconi and Muskie have already been a major part of the team's successful season. Everyone is looking forward to another successful season next year.

Club Corner

RHC

Thank you to all who participated and helped in the Lehigh/Beaver Dating Game. RHC will sponsor a Dance Marathon on April 8. The money made from this dance will benefit St. Jude's Children's Hospital. This hospital is the largest childhood cancer research center in the world. The survival rate for children with the most common form of cancer has risen from less than 5% to over 50%. Please help by joining RHC a the Marathon.

We need you on April 12 to give blood. Last semester many of you gave. We need more. Come! Help! Give someone else a second chance to live. Thank You.

Classifieds

MODEL/ACTORS
WANTED
Kids-Teens-Adults
EARN \$100-\$300+ PER
HOUR

Slickis Model and Talent Agency, New York and Philadelphia's leading and most respectable agency is searching for new faces for T.V. commercials, film, catalogue, magazine, and promotional work. Experience helpful but not required. FREE TRAINING IF HIRED?

*Be careful, other agencies will charge you for training. Call for evaluation/employment, (215) 540-0440.

DEVOTIONAL BOOKLETS- Over the past 25 years many students, faculty, and staff have profited from reading issues of **OUR DAILY BREAD** and other devotional booklets. If you would like to receive sets of booklets quarterly, end your name to Dr. Arthur Breyer, Box # 732, or leave your name at X2993. There is no charge and your request can be cancelled at any time. Have a good week!

FOR SALE- RUBY RING- 8 small diamonds- 8 small rubies- 1950's "bow" setting: originally \$560- selling for \$350. Contact Susan box # 502 or evenings at 646-4240 for more information.

Communications Club

The Communications Club is holding its second meeting on Wed. March 15 at 7:30 p.m. in Heinz lobby. Our meetings will be held every other week. At our first meeting we discussed how to raise money for the club and what activities we would like to do as a club. Our main goals are to unite students in any forms of communications and to take trips to local and out of town newspapers and news stations. We intend to have guest speakers during the month of April and activity nights for the club. If interested, give me a call at X2358 Gina Range - President.

FOR SALE- ENGLISH EQUESTRIAN RIDING JACKET. In black, size 16. Worn a couple of times. \$40. Call Carolyn X2354. Come see it in 114N Heinz.

FOR SALE- 1972 ORANGE VW BUG CONVERTIBLE. Body is in excellent condition. Engine needs some work. Call 886-4627.

BUYING A COMPUTER? Why not buy from the same company Beaver buys from - ZENITH! Beaver buys all types of computers from Zenith, just check the Library and Boyer Hall. Now you can own your own computer and avoid those end-of-semester lines. The best part is that you can save up to 40% with Zenith's student prices. If you're interested and want to check models and prices, call Brad Rhein at X2355 or 576-9778.

EDUCATIONAL- THE AMERICAN LANGUAGE ACADEMY is a school located in Boyer Hall, which teaches Foreign Students English. ALA is looking for enthusiastic people interested in participating in the conversation partner program. For more information, call Nicki at 576-7626.

PERSONAL - TO ALL WOGSTERS - WOG FROM THE WOGMASTER.

WBVR

The radio station still needs DJ's. DJ's do not need any experience because they will be trained. The training is simple and not at all time consuming. We have positions for Monday 2-4, Tuesday 2-4 and 6-10, and Friday 2-4. DJ's are welcome to play any format they wish, and variety is welcome.

Writing Center Update

By Rochelle Butkowsky
"I'm not sure if this sounds right," is what I usually hear as I see the next Writing Center customer approach my little table in the library's computer room. This, seemingly simplistic statement is actually the first step students can take in producing a more clearly written, more precise paper.

Writing Center consultants such as myself are available to help fellow students with this very task. Whether it be a problem with sentence structure, or deciding on a research topic, we are here for usually an hour or more at a time to listen to the students' concerns questions and general apprehensions that often arise when diving head-first into a paper.

We will never say to a student that what he/she has written is "bad"- we are here to advise on how it can be

made better. Both consultant and customer benefit from this personal interaction because issues common to all students are talked through, so learning takes place on both ends. Remember that we are here for all students who wish for their paper to be read by an objective peer, knowing all too well the occasional pitfalls of tackling a paper assignment alone.

Now there the spring semester is half over, those research paper assignments are being given and sure enough there are going to be students that need or want their papers to be read and commented on. Very often, an objective opinion is exactly what that student needs to get back on the right track to writing a solid paper.

Many students know of the Beaver Writing Center, but unfortunately not enough students are taking advantage

of it. Beaver is one of the few colleges where the writing center is totally run by fellow students and not just faculty that some people may be unfamiliar with. We understand the writing process from a familiar point of view; we're in many of the same classes as those we consult, so we are basically going through the same assignments and wind up asking the same questions about our papers. It's surprising at how much a difference having another student read one's paper can make. A peer can spot places where the writer may have some problems much more easily than the writer can, and input from someone else can spark up new ideas too. All it takes is a trip to that little table in the computer room on a phone call at one of our extensions and sure enough- an eager writing center person will be glad to help.

What's Happening in the Dam

By Heather Nethen
Kerry Costello

In the next few months there will be many activities taking place in the Dam. For all those couch-potatoes who don't know what the Dam is, it's the Thursday night special activities that take place in the Chat.

Recently many people have stopped attending the Dam activities, so to get people involved again in the

Dam committee, which consists of Kerry Costello, Tammy Gillespie, Rick Mandella and Sharon Gillespie, Rick Mandell and Sharon Hardy, has planned some very exciting events.

On April 6 you can experience the hypnotic effects of Dr. Mort Berkowitz, hypnotist. On April 13 magician/comedian Bob Gardner will entertain us. Another important activity will take place on Wednesday May 3 when

Carl Rosen Singer and keyboard comedian will visit Beaver.

Along with these major events are a few other "unofficially scheduled" bands that will play during the month of April.

So keep an eye out for the upcoming events and don't be a couch-potato.



**data
systems**

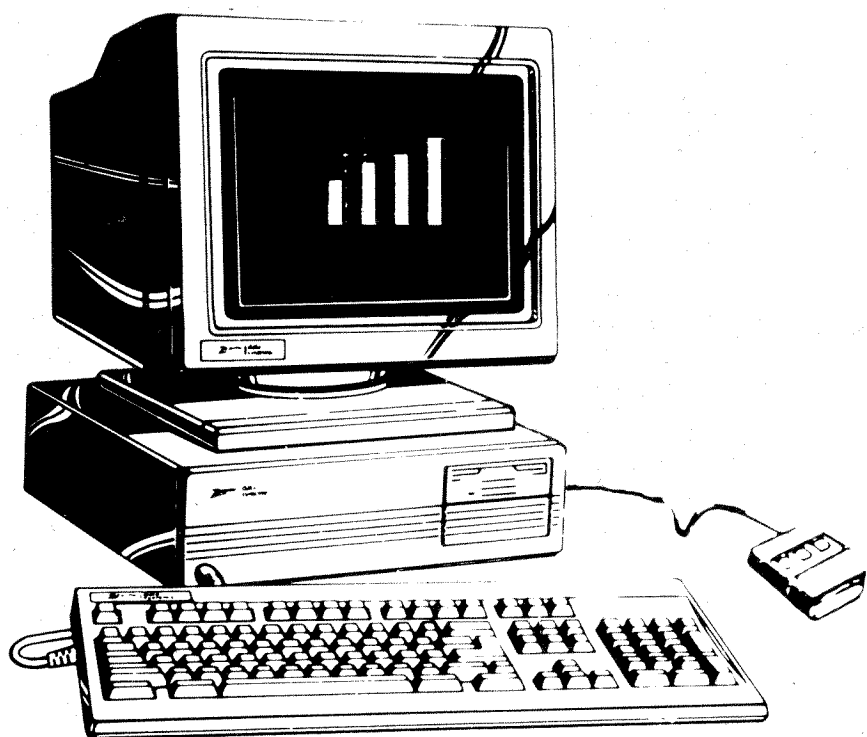
THE QUALITY GOES IN BEFORE THE NAME GOES ON

40-50% OFF RETAIL PRICE GREAT PERFORMANCE • GREAT PRICE

ZENITH INNOVATES AGAIN—

A \$198.00 RETAIL VALUE OUR LOWEST PRICE EVER

With the purchase of Zenith Data Systems Z-286LP Model 20 or Model 40
we are including a Mouse and Microsoft Windows
at no additional charge.



OUR MOUSE DOES WINDOWS FREE

- 80286 processor for AT level performance
- 1MB memory for current and future applications
- 2 full expansion slots for maximum flexibility
- small cabinet design conserves desk space
- easy to set up and use
- choice of monochrome or color monitor

THE Z-286 PC IS NOW AVAILABLE AT YOUR NEAREST
ZENITH DATA SYSTEMS CAMPUS CONTACT:

Brad Rhein
ZDS Student Representative
(215) 572-2355

American Express, VISA, MasterCard Credit Cards Accepted



THE QUALITY GOES IN BEFORE THE NAME GOES ON®

Microsoft is a registered trademark of Microsoft Corp.
Prices subject to change without notice.

© 1988, Zenith Data Systems